



Featuring Flowerfields by Sarah Campbell

Manchester Square Quilt

Finished Size: 60" x 72" (1.52m x 1.83m)

Project designed by Marcea Owen - Cotton Street Commons

Purchase pattern at cottonstreetcommons.com

Technique: Pieced | Skill Level: Advanced Beginner



Manchester Square Quilt

Fabric Requirements

DESIGN	COLOR	ITEM ID	YARDAGE
(A) Meadow	MULTI	PWSH015.MULTI	½ yard (0.46m)
(B) Ranunculus	GREEN	PWSH016.GREEN	½ yard (0.46m)
(C) Cubist	BLACK	PWSH017.BLACK	½ yard (0.46m)
(D) Paint Box	MULTI	PWSH018.MULTI	½ yard (0.46m)
(E) Evening Walk	PINK	PWSH020.PINK	½ yard (0.46m)
(F) First Light	MULTI	PWSH021.MULTI	½ yard (0.46m)
(G) Echoes	BLACK	PWSH023.BLACK	½ yard (0.46m)
(H) Sunday Table	BLUE	PWSH024.BLUE	½ yard (0.46m)
(I) Pool	BLUE	PWSH026.BLUE*	1 yard (0.91m)
(J) Seeds	Lime	PWCD012.XLIME	2 yards (1.83m)

* includes binding

Backing (Purchased Separately)

44" (1.12m) wide

Sunday Table

BLUE

PWSH024.BLUE

4½ yards (4.11m)

OR

108" (2.74m) wide

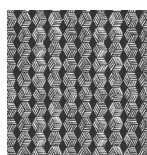
2 yards (1.83m)



(A)



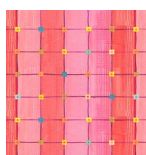
(B)



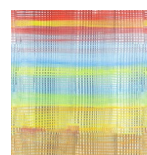
(C)



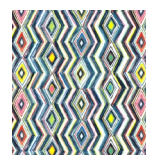
(D)



(E)



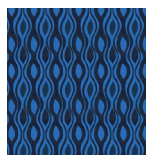
(F)



(G)



(H)



(I)



(J)



Backing
44"

*If kitting, refer to the final pattern for yardage amounts,
it is recommended that a sample is made to confirm accuracy.*