



Featuring Holly Day by Martha Negley

# Holly Day Winter Wreath Tree Skirt

Finished Size: 54" Round (1.37m Round)

Project designed by Robin Long of Robin Ruth Design

Purchase pattern at [robinruthdesign.com](http://robinruthdesign.com)

Techniques: Strip Pieced Mariner's Compass Blocks, Faced Appliqué, Simple Piecing | Skill Level: Intermediate



# Holly Day Winter Wreath Tree Skirt

## Fabric Requirements

DESIGN	COLOR	ITEM ID	YARDAGE
(A) Holiday Mix	Cream	PWMN059.CREAM	1 yard (0.91m)
(B) Holiday Mix	Red	PWMN059.RED*	7/8 yard (0.80m)
(C) Little Poinsettia	Red	PWMN060.RED	3/4 yard (0.61m)
(D) Garland	Green	PWMN062.GREEN	1/4 yard (0.23m)
(E) Santas	Ivory	PWMN063.IVORY	3/4 yard (0.69m)
(F) Scroll	Green	PWMN064.GREEN	3/8 yard (0.34m)
(G) Holiday Floral	Red	PWMN065.RED	1/2 yard (0.46m)
(H) Evergreen	Green	PWMN066.GREEN	1/2 yard (0.46m)

\* includes binding

## Backing (Purchased Separately)

**72" (1.83m) wide**

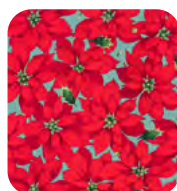
Backed with 1 2/3 yds. of Red Felt



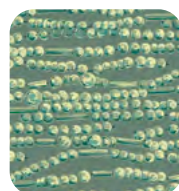
(A)



(B)



(C)



(D)



(E)



(F)



(G)



(H)

*If kitting, refer to the final pattern for yardage amounts, it is recommended that a sample is made to confirm accuracy.*