



Featuring Holly Day by Martha Negley

Vintage Holiday Table Topper

Finished Size: 40" Round (1.01m Round)

Project designed by Jenice Belling

Purchase pattern at quiltedgarden.com

Techniques: Pieced and Applique | **Skill Level:** Advanced Beginner



Vintage Holiday Table Topper

Fabric Requirements

DESIGN	COLOR	ITEM ID	YARDAGE
(A) Holiday Mix	Cream	PWMN059.CREAM	1/3 yard (0.30m)
(B) Holiday Mix	Red	PWMN059.RED	1/3 yard (0.30m)
(C) Little Poinsettia	Red	PWMN060.RED	1/3 yard (0.30m)
(D) Large Poinsettia	Red	PWMN061.RED	1/3 yard (0.30m)
(E) Garland	Green	PWMN062.GREEN	1/3 yard (0.30m)
(F) Santas	Ivory	PWMN063.IVORY	1/3 yard (0.30m)
(G) Scroll	Green	PWMN064.GREEN	1/3 yard (0.30m)
(H) Holiday Floral	Red	PWMN065.RED	1/3 yard (0.30m)
(I) Evergreen	Green	PWMN066.GREEN	1/3 yard (0.30m)
(J) Vibe	Mellow	PWSK030.MELLOW	1 1/4 yards (1.14m)
(K) Cross Stitch	Turquoise	PWFS059.TURQUOISE	3/8 yard (0.34m)
(L) Blossom Dot	Mist	PWFS053.MIST	3/8 yard (0.34m)
(M) Designer Essential Solid	Rouge	CSFSESS.ROUGE	1/8 yard (0.11m)
(N) Blossom Dot	Sun	PWFS053.SUN	1/8 yard (0.11m)

* includes binding

Backing (Purchased Separately)

44" (1.12m) wide

Evergreen GREEN PWMN066.GREEN 1 1/4 yards (1.14m)



(A)



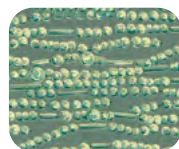
(B)



(C)



(D)



(E)



(F)



(G)



(H)



(I)



(J)



(K)



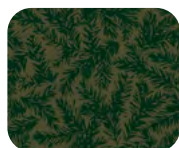
(L)



(M)



(N)



Backing
44"

*If kitting, refer to the final pattern for yardage amounts,
it is recommended that a sample is made to confirm accuracy.*