



Featuring Holly Day by Martha Negley

Winterberry Waltz Quilt

Finished Size: 60" x 60" (1.52m x 1.52m)

Project designed by Linda McGibbon

Purchase pattern at lakeviewquilting2.com

Techniques: Pieced or Foundation Paper Pieced | **Skill Level:** Advanced Beginner



Winterberry Waltz Quilt

Fabric Requirements

DESIGN	COLOR	ITEM ID	YARDAGE
(A) Holiday Mix	Cream	PWMN059.CREAM	¼ yard (0.23m)
(B) Holiday Mix	Red	PWMN059.RED	1¼ yards (1.14m)
(C) Little Poinsettia	Red	PWMN060.RED	⅜ yard (0.34m)
(D) Large Poinsettia	Red	PWMN061.RED	⅜ yard (0.34m)
(E) Garland	Green	PWMN062.GREEN*	¾ yard (0.69m)
(F) Scroll	Green	PWMN064.GREEN	½ yard (0.46m)
(G) Holiday Floral	Red	PWMN065.RED	⅛ yard (0.11m)
(H) Evergreen	Green	PWMN066.GREEN	⅜ yard (0.34m)
(I) Ice Chips	Wind	PWSK012.WIND	1¼ yards (1.14m)
(J) Peachy	Mellow	PWSK034.MELLOW	2½ yards (2.29m)
(K) Medallions	Red	PWSP016.RED	½ yard (0.46m)
(L) Brushstrokes	Green	PWSP018.GREEN	¼ yard (0.23m)

* includes binding

Backing (Purchased Separately)

44" (1.12m) wide

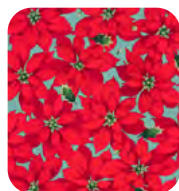
Santas	Ivory	PWMN063.IVORY	4 yards (3.66m)
--------	-------	---------------	-----------------



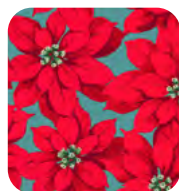
(A)



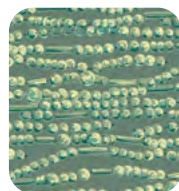
(B)



(C)



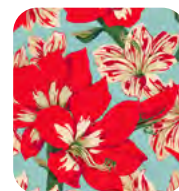
(D)



(E)



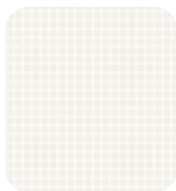
(F)



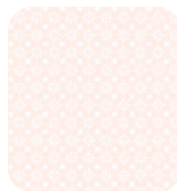
(G)



(H)



(I)



(J)



(K)



(L)



Backing
44"

*If kitting, refer to the final pattern for yardage amounts,
it is recommended that a sample is made to confirm accuracy.*