



Featuring In the Pink by Este MacLeod

Modern Blossom Quilt

Finished Size: 79" x 79" (2.01m x 2.01m)

Project designed by Carolyn Murfitt - Free Bird Quilting Designs, Re-Colored by FreeSpirit Fabrics

Purchase pattern at freebirdquiltingdesigns.com.au

Technique: Pieced with Paper Templates | Skill Level: Intermediate

freespiritfabrics.com



Modern Blossom Quilt

Fabric Requirements

DESIGN	COLOR	ITEM ID	YARDAGE
(A) Cosmo	MULTI	PWES013.MULTI	2 yards (1.83m)
(B) Anemones	MULTI	PWES014.MULTI	1¼ yards (1.14m)
(C) Coucal	MULTI	PWES015.MULTI	1¾ yards (1.60m)
(D) Peche	MULTI	PWES016.MULTI	7⁄8 yard (0.80m)
(E) Stella Blue	BLUE	PWES017.BLUE	7⁄8 yard (0.80m)
(F) Piazza	MULTI	PWES018.MULTI	1¼ yards (1.14m)
(G) Leaf Tumble	PINK	PWES019.PINK	1¼ yards (1.14m)
(H) Dolche	PINK	PWES020.PINK	1½ yards (1.37m)
(I) Sabah	GREEN	PWES021.GREEN	7⁄8 yard (0.80m)
(J) Petals	GREEN	PWES022.GREEN	5⁄8 yard (0.57m)
(K) Silhouette	GREEN	PWES023.GREEN	5⁄8 yard (0.57m)
(L) Fizzy	PINK	PWES024.PINK	3⁄8 yard (0.34m)
(M) Designer Essential Solid	GLACIER	CSFSESS.GLACI*	4¾ yards (4.34m)

* includes binding

Backing (Purchased Separately)

44" (1.12m) wide

Cosmo

MULTI

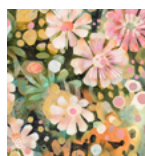
PWES013.MULTI

6 yards (5.49m)

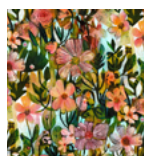
OR

108" (2.74m) wide

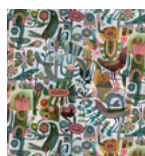
2½ yards (2.29m)



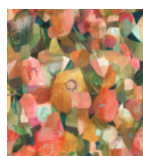
(A)



(B)



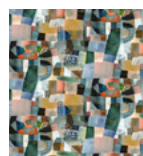
(C)



(D)



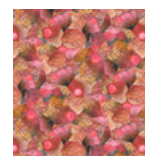
(E)



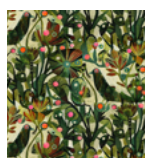
(F)



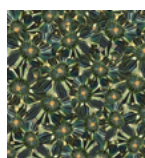
(G)



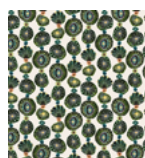
(H)



(I)



(J)



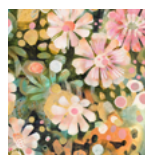
(K)



(L)



(M)



Backing
44"

If kitting, refer to the final pattern for yardage amounts, it is recommended that a sample is made to confirm accuracy.