

Free Spirit



Featuring *Rising Tide* by Monika Forsburg

Joy Ride Quilt

Finished Size: 63" x 76" (1.60m x 1.93m)

Project designed by Sharon McConnell - Color Girl Quilts

Purchase pattern at colorgirlquilts.com

Technique: Pieced with Classic Curves Ruler by Color Girl Quilts | Skill Level: Advanced Beginner

Fabric Requirements

DESIGN	COLOR	ITEM ID	YARDAGE
(A) Currents	Green	PWMF039.GREEN	½ yard (0.46m)
(B) Ripple	Mint	PWMF040.MINT	½ yard (0.46m)
(C) Shore Line	Pink	PWMF041.PINK	½ yard (0.46m)
(D) Brine	Pink	PWMF042.PINK*	1¼ yards (1.14m)
(E) Tidal	Mint	PWMF043.MINT	½ yard (0.46m)
(F) Waves	Blue	PWMF044.BLUE	½ yard (0.46m)
(G) Shallows	Mint	PWMF045.MINT	½ yard (0.46m)
(H) Seagrass	Blue	PWMF046.BLUE	½ yard (0.46m)
(I) Abyss	Green	PWMF047.GREEN	½ yard (0.46m)
(J) Cove	Multi	PWMF048.MULTI	½ yard (0.46m)
(K) Rock Pool	Blue	PWMF049.BLUE	½ yard (0.46m)
(L) Drifting	Pink	PWMF050.PINK	½ yard (0.46m)
(M) Designer Essential Solid	Arctic White	CSFSESS.ARWHT	2¾ yards (2.51m)

* includes binding

Backing (Purchased Separately)

44" (1.12m) wide

Abyss

Green

PWMF047.GREEN

4¼ yards (3.89m)

OR

108" (2.74m) wide

2 yards (1.83m)



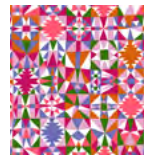
(A)



(B)



(C)



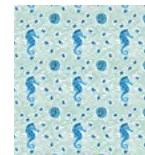
(D)



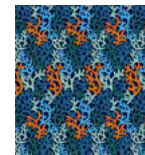
(E)



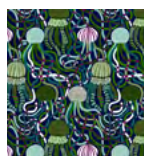
(F)



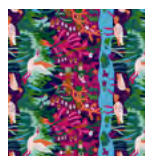
(G)



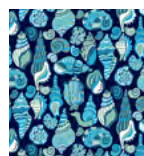
(H)



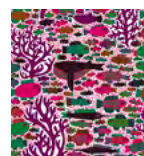
(I)



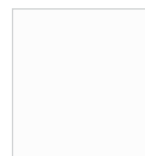
(J)



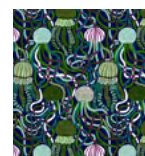
(K)



(L)



(M)



Backing
44"

If kitting, refer to the final pattern for yardage amounts, it is recommended that a sample is made to confirm accuracy.