



Finished Size: 70" x 88" (1.77m x 2.23m)

*Project designed by Lisa Alley Bear Hug Quiltworks*

*Purchase pattern at [bearhugquiltworks.com](http://bearhugquiltworks.com)*

Technique: Pieced | Skill Level: Advanced Beginner



## Fabric Requirements

DESIGN	COLOR	ITEM ID	YARDAGE
(A) Forest	Wooded	PWWM031.WOODDED	5/8 yard (0.57m)
(B) Chrysanthemum Tonal	Crimson	PWWM080.CRIMSON	1/4 yard (0.23m)
(C) MED Rosehip	Biscuit	PWWM125.BISCUIT	2 1/2 yards (2.29m)
(D) MED Fruit	Berry	PWWM128.BERRY	1/4 yard (0.23m)
(E) MED Fruit	Ink	PWWM128.INK	1/4 yard (0.23m)
(F) MED Montreal	Forest	PWWM130.FOREST	1/4 yard (0.23m)
(G) MED Brer Rabbit	Gold	PWWM131.GOLD	7/8 yard (0.80m)
(H) SM Brer Rabbit	Thornedrose	PWWM132.THORNEDROSE	2 1/8 yards (1.94m)
(I) SM Yew & Aril	Berry	PWWM134.BERRY	1/4 yard (0.23m)
(J) Yew & Aril	Gold	PWWM135.GOLD	1/4 yard (0.23m)
(K) SM Wilhelmina	Crimson	PWWM136.CRIMSON*	2 1/4 yards (2.06m)

\* includes binding

## Backing (Purchased Separately)

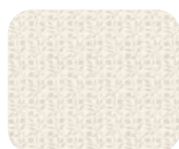
44" (1.12m) wide Forest OR 108" (2.74m) wide Wilhemina	Wooded	PWWM031.WOODDED	5 1/2 yards (5.03m)
	Crimson	QBWM010.CRIMSON	3 1/4 yards (2.97m)



(A)



(B)



(C)



(D)



(E)



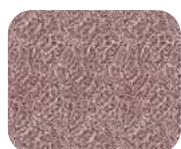
(F)



(G)



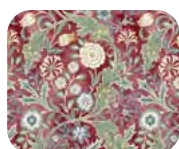
(H)



(I)



(J)



(K)



Backing  
44"



Backing  
108"

If kitting, refer to the final pattern for yardage amounts,  
it is recommended that a sample is made to confirm accuracy.