



Featuring Ravel by e bond

Mouse Trap Quilt

Finished Size: 50" x 72" (1.27m x 1.83m)

Project designed by Sam Hunter-Hunter's Design Studio

Purchase pattern at huntersdesignstudio.com

Technique: Pieced | Skill Level: Advanced Beginner

Fabric Requirements

DESIGN	COLOR	ITEM ID	YARDAGE
(A) Ravel	Ocean	PWEB033.OCEAN	¼ yard (0.23m)
(B) Unravel	Ink	PWEB034.INK	¼ yard (0.23m)
(C) Loosen	Blaze	PWEB035.BLAZE	¼ yard (0.23m)
(D) Fray	Indigo	PWEB036.INDIGO	¼ yard (0.23m)
(E) Ebb	Frost	PWEB037.FROST	¼ yard (0.23m)
(F) Tangle	Saltwater	PWEB039.SALTWATER	¼ yard (0.23m)
(G) Intertwine	Sandstone	PWEB041.SANDSTONE	¼ yard (0.23m)
(H) Small Intertwine	Watermelon	PWEB042.WATERMELON	¼ yard (0.23m)
(I) Twist	Mix	PWEB043.MIX	¼ yard (0.23m)
(J) Scribble	Charcoal	PWEB044.CHARCOAL	¼ yard (0.23m)
(K) Remainder	Plaster	PWEB045.PLASTER	¼ yard (0.23m)
(L) Memory	Candy	PWEB046.CANDY	¼ yard (0.23m)
(M) Jumble	Photoflash	PWEB047.PHOTOFLASH	¼ yard (0.23m)
(N) Cracked Shadow	Black	PWTH128.BLACK*	1¾ yards (1.60m)

* includes binding

Backing (Purchased Separately)

44" (1.12m) wide

Accumulate X-ray PWEB040.XRAY 3¼ yards (2.97m)

OR

108" (2.74m) wide

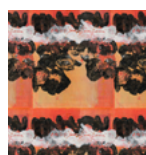
1¾ yards (1.60m)



(A)



(B)



(C)



(D)



(E)



(F)



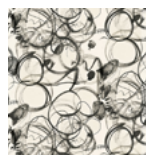
(G)



(H)



(I)



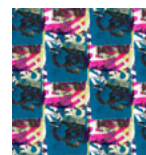
(J)



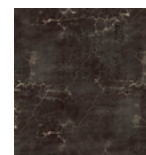
(K)



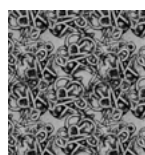
(L)



(M)



(N)



Backing
44"

If kitting, refer to the final pattern for yardage amounts, it is recommended that a sample is made to confirm accuracy.