



Featuring the Kaffe Fassett Collective

# Cathedral Tiles Mystery Quilt - Delft PUZZLE 3

*Project designed by Liza Lucy*

**Technique:** Pieced | **Skill Level:** Advanced Beginner

*All possible care has been taken to assure the accuracy of this pattern. We are not responsible for printing errors or the manner in which individual work varies. Please read the instructions carefully before starting this project.*





# Cathedral Tiles Mystery Quilt - Delft

Dear Valued Kaffe Fassett Quilter,

There is a fabric shortage for both **Fabric J** (Spot, GP70.SKYXX) & **Fabric K** (Paperweight, GP20.COBLT) in Puzzle Piece 3 of your Delft Mystery Quilt package. First, we would like to apologize that this shortage occurred, we are shipping an additional 6" of each fabric to the retailer that you purchased your Delft Mystery Quilt from and they will fulfill this shortage so you can continue making.

In the package you did receive, there is ½ yard of each **Fabric J & K**, you can cut (6) of the (7) 2¾" strips needed as directed on page 2 under cutting. You will be short one strip and will be able to make this additional cut with the 6" of fabric that is shipping to your retailer. These fabrics are used on page 3 Step 4 in puzzle piece 3. From the fabric you did receive you will be able to make 60 of the 64 Unit 7 pieces in this step. When you receive the additional 6" of fabric, you can complete the additional (4) Unit 7 pieces for the total of 64 units needed.

We strive for excellence in all our FreeSpirit products. When challenges arise, we are committed to addressing them promptly and maintaining the confidence of our valued quilters like you. We look forward to seeing all of your completed Delft Mystery Quilt projects toward the end of October. We hope you post and share your quilts with Kaffe Fassett Studio, FreeSpirit Fabrics and fellow quilters on social media.

We value your love for quilting, our artists, and fabrics and thank you for your understanding and patience.

Sincerely yours,  
*FreeSpirit Fabrics*

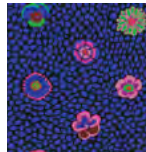


# Cathedral Tiles Mystery Quilt - Delft

## PUZZLE 3

### Fabric Requirements

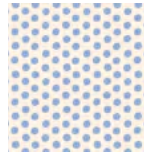
DESIGN	COLOR	ITEM ID	YARDAGE
(D) Guinea Flower	Black	PWGP059.BLACK	5/8 yard (0.57m)
(E) Millefiore	Pastel	GP92.PAST	5/8 yard (0.57m)
(J) Spot	Sky	GP70.SKYXX	2/3 yard (0.61m)
(K) Paperweight	Cobalt	GP20.COBLT	2/3 yard (0.61m)



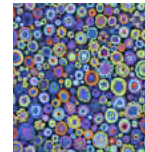
(D)



(E)



(J)



(K)

### Additional Requirements

- Kaffe Collective 100% cotton Aurifil thread 50wt.
- **Optional:** template plastic or freezer paper and permanent marker

### Cutting

WOF = Width of Fabric

**From Fabrics D and E, cut from each:**

- (3) 5½" x WOF; subcut
- (16) 5½" squares

**From Fabrics J and K, cut from each:**

- (7) 2¾" x WOF

*All possible care has been taken to assure the accuracy of this pattern. We are not responsible for printing errors or the manner in which individual work varies. Please read the instructions carefully before starting this project.*



# Cathedral Tiles Mystery Quilt - Delft

## PUZZLE 3

This is intriguing! Are you enjoying creating with these luscious fabrics?

### Instructions

#### Notes:

- Use a  $\frac{1}{4}$ " seam allowance throughout. Sew all pieces with right sides together and raw edges even using matching thread. Press after each seam.
- Unit numbers will remain the same from puzzle to puzzle, so be sure to label units as you complete them and keep them grouped together by number to stay organized for the next puzzle.

1. Copy the template pattern (page 4) onto template plastic or freezer paper and cut out on the outer solid lines. Transfer all text and markings. You can also use the paper templates provided but place a rotary cutting ruler on top when cutting out fabric, making sure not to trim off any of the paper template with each pass of the rotary cutter.
2. Draw a diagonal line from corner to corner across the wrong side of each **Fabric E**  $5\frac{1}{2}$ " square. If desired, mark a stitching line  $\frac{1}{4}$ " from both sides of first line. **Fig. 7**

**Fig. 7**



3. Arrange a marked **Fabric E**  $5\frac{1}{2}$ " square right sides together with a **Fabric D**  $5\frac{1}{2}$ " square, aligning all raw edges. Stitch along the 2 outside lines (or a scant  $\frac{1}{4}$ " away if you only marked the center line). Cut on the center line. Press the 2 triangle sets open to yield 2 HST units. Centering seam, trim each to 5" square. Make a total of 32 **Unit 6**. **Fig. 8**

**Fig. 8**

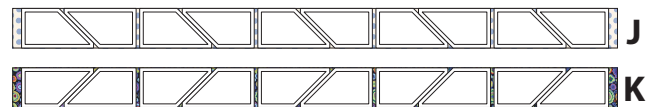


Repeat 16 times for 32 units.

**Unit 6 - Make 32**

4. From the **Fabric J**  $2\frac{3}{4}$ " x WOF strips, cut a total of 64 pieces using the **Fabric J** template (page 4). From the **Fabric K**  $2\frac{3}{4}$ " x WOF strips, cut a total of 64 pieces using the **Fabric K** template (page 4). **Fig. 9**

**Fig. 9**



Cut from 42" width of fabric.

5. Stitch 1 each **Fabric J** piece and **Fabric K** piece together along short ends as shown. Press open. Make a total of 64 **Unit 7** ( $2\frac{3}{4}$ " x  $9\frac{1}{2}$ " unfinished). **Fig. 10**

**Fig. 10**



Unit 7 - Make 64

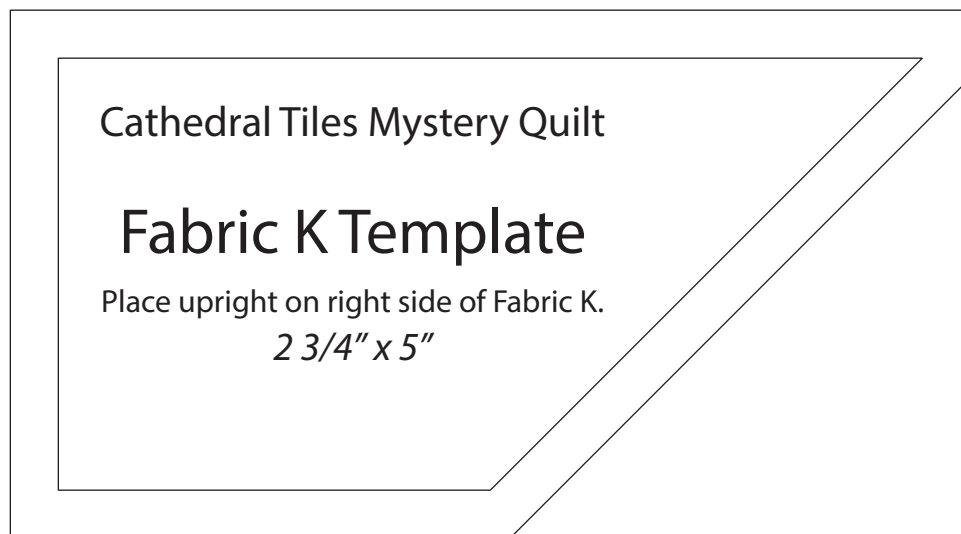
**Unit 7 - Make 64**

*All possible care has been taken to assure the accuracy of this pattern. We are not responsible for printing errors or the manner in which individual work varies. Please read the instructions carefully before starting this project.*





# Cathedral Tiles Mystery Quilt - Delft



This square should measure 1" x 1" (2.54cm x 2.54cm) when printed.

**\*\*\* Measure templates before cutting to confirm printing at 100%\*\*\***

*All possible care has been taken to assure the accuracy of this pattern. We are not responsible for printing errors or the manner in which individual work varies. Please read the instructions carefully before starting this project.*