

Featuring the Kaffe Fassett Collective

# Cathedral Tiles Mystery Quilt - Multi PUZZLE 1

*Project designed by Kaffe Fassett*

**Technique:** Pieced | **Skill Level:** Advanced Beginner

*All possible care has been taken to assure the accuracy of this pattern. We are not responsible for printing errors or the manner in which individual work varies. Please read the instructions carefully before starting this project.*

[freespiritfabrics.com](http://freespiritfabrics.com)



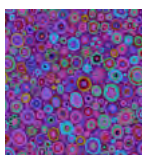


# Cathedral Tiles Mystery Quilt - Multi

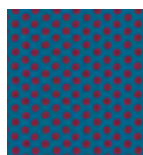
## PUZZLE 1

### Fabric Requirements

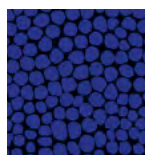
DESIGN	COLOR	ITEM ID	YARDAGE
(B) Paperweight	Purple	GP20.PURPL	¼ yard (0.23m)
(D) Spot	Peacock	PWGP070.PEACO	¼ yard (0.23m)
(F) Jumble	Blue	PWBM053.BLUEx	¼ yard (0.23m)
(G) Guinea Flower	Black	PWGP059.BLACK	¼ yard (0.23m)
(Q) Aboriginal Dot	Ocean	GP71.OCEAN	½ yard (0.46m)
(R) Reflections	Putty	PWBM087.PUTTY	½ yard (0.46m)
(V) Reflections	Teal	PWBM087.TEAL	¾ yard (0.69m)



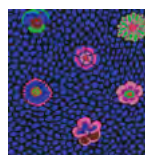
(B)



(D)



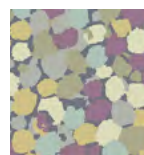
(F)



(G)



(Q)



(R)



(V)

### Additional Requirements

- Kaffe Collective 100% cotton Aurifil thread 50wt.
- **Optional:** square rotary cutting ruler, at least 7", with eighth-inch markings

### Cutting

WOF = Width of Fabric

QST = Quarter-square Triangle

**From Fabrics Q and R, cut from each:**

(3) 3¾" x WOF

**From Fabrics B, D, F and G, cut from each:**

(1) 5¾" x WOF; subcut

(5) 5¾" squares, then cut in half diagonally twice to yield 20 QSTs each (80 total)

**From Fabric V, cut:**

(4) 5¾" x WOF; subcut

(20) 5¾" squares, then cut in half diagonally twice to yield 80 QSTs

*All possible care has been taken to assure the accuracy of this pattern. We are not responsible for printing errors or the manner in which individual work varies. Please read the instructions carefully before starting this project.*



# Cathedral Tiles Mystery Quilt - Multi

## PUZZLE 1

Bring your fabric Puzzle 1 to life creating with these beautiful Kaffe Fassett fabrics. Cut and piece these gorgeous fabrics as you work out the mystery design that will come together in the end with your seventh puzzle.

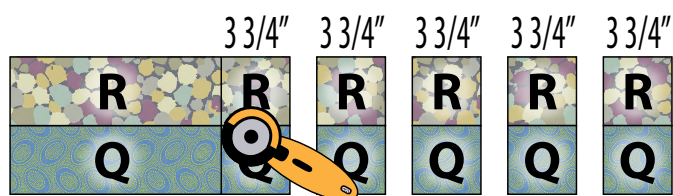
## Instructions

### Notes:

- Use a  $\frac{1}{4}$ " seam allowance throughout. Sew all pieces with right sides together and raw edges even using matching thread. Press after each seam.
- Unit numbers will remain the same from puzzle to puzzle, so be sure to label units as you complete them and keep them grouped together by number to stay organized for the next puzzle.

1. Stitch 1 each **Fabrics Q** and **R**  $3\frac{3}{4}$ " x WOF strips together lengthwise. Press seam allowance towards darker fabric. Make sure the strip set measures 7" high, including seam allowance. Make a total of 3 strip sets. From strip sets, cut a total of 24 segments each  $3\frac{3}{4}$ " wide. Label these **Unit 1**. **Fig. 1**

**Fig. 1**

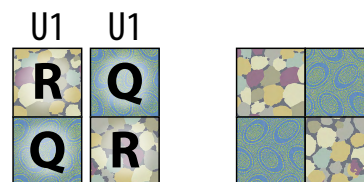


Make 3 Strip Sets

**Cut 24 - Unit 1**

2. Sew 2 **Unit 1** together, alternating fabrics, to make a four-patch. Centering seams, trim to  $6\frac{7}{8}$ " square (unfinished). Repeat to make a total of 12 of **Unit 2**. **Fig. 2**

**Fig. 2**



**Make 12 - Unit 2**

3. Stitch 1 each **Fabrics D** and **V**  $5\frac{3}{4}$ " QSTs together along short edges, noting fabric placement as shown. Press towards **Fabric V**. Make a total of 20 **Unit 3a** ( $5\frac{3}{8}$ " x  $5\frac{3}{8}$ " x  $7\frac{7}{8}$ " unfinished). In the same manner, make 20 each of **Units 3b-3d**, replacing **Fabric D** with **Fabrics F, B, and G**. **Fig. 3**

**Fig. 3**



**Unit 3a - Make 20**



**Unit 3b - Make 20**



**Unit 3c - Make 20**



**Unit 3d - Make 20**

*All possible care has been taken to assure the accuracy of this pattern. We are not responsible for printing errors or the manner in which individual work varies. Please read the instructions carefully before starting this project.*