



Featuring the Kaffe Fassett Collective

Cathedral Tiles Mystery Quilt - Multi PUZZLE 6

Project designed by Kaffe Fassett

Technique: Pieced | **Skill Level:** Advanced Beginner



All possible care has been taken to assure the accuracy of this pattern. We are not responsible for printing errors or the manner in which individual work varies. Please read the instructions carefully before starting this project.

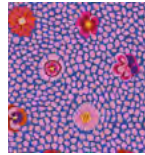


Cathedral Tiles Mystery Quilt - Multi

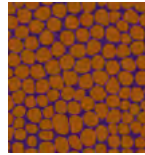
PUZZLE 6

Fabric Requirements

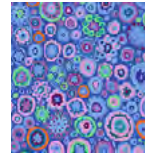
DESIGN	COLOR	ITEM ID	YARDAGE
(A) Guinea Flower	Pink	GP59.PINK	1/3 yard (0.30m)
(P) Jumble	Ochre	PWBM053.OCHRE	3/4 yard (0.69m)
(U) Paperweight	Blue	PWGP020.BLUEx	1/3 yard (0.30m)



(A)



(P)



(U)

Additional Requirements

- Kaffe Fassett Collective 100% cotton Aurifil thread 50wt.

Cutting

WOF = Width of Fabric

HST = Half-square Triangle

From Fabric P, cut:

(4) 5 3/8" * x WOF; subcut

(24) 5 3/8" * squares, then cut in half diagonally once to yield 48 HSTs

**If desired, size up strips and squares by 1/8", then trim completed units to size listed.*

From Fabrics A and U, cut from each:

(2) 4" x WOF; subcut

(16) 4" squares, then cut in half diagonally once to yield 32 HSTs (64 total)

All possible care has been taken to assure the accuracy of this pattern. We are not responsible for printing errors or the manner in which individual work varies. Please read the instructions carefully before starting this project.

Cathedral Tiles Mystery Quilt - Multi

PUZZLE 6

We are almost there! We are creating two more blocks this time, are you getting closer to solving this beautiful mystery?

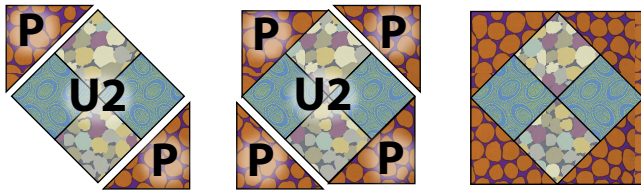
Instructions

Notes:

- Use a $\frac{1}{4}$ " seam allowance throughout. Sew all pieces with right sides together and raw edges even using matching thread.
- Unit numbers will remain the same from puzzle to puzzle, so be sure to label each unit.

1. Sew 2 **Fabric P** $5\frac{3}{8}$ " HSTs to opposite sides of a **Unit 2** - Puzzle 1. Add 2 more **Fabric P** $5\frac{3}{8}$ " HSTs to the remaining sides of the unit to complete a block. Make a total of 12 **Block 3** ($9\frac{1}{2}$ " square unfinished). **Fig. 16**

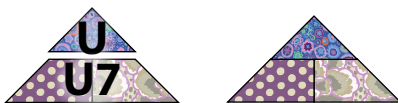
Fig. 16



Block 3 - Make 12

2. Stitch the long side of a **Fabric U** 4" HST to the top of a **Unit 7** as shown. Make a total of 32 **Unit 10a** ($7\frac{1}{4}$ " x $7\frac{1}{4}$ " x $10\frac{1}{4}$ " unfinished). In the same manner, make 32 **Unit 10b** with fabrics and units indicated. **Fig. 17**

Fig. 17



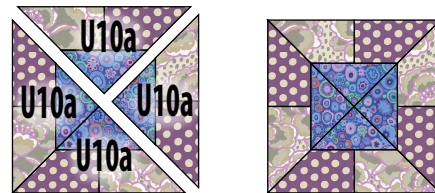
Unit 10a - Make 32



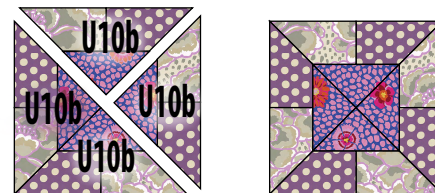
Unit 10b - Make 32

3. Arrange 4 of **Unit 10a** as shown. Stitch units together in pairs, then sew paired units together to complete a block. Make a total of 8 of **Block 4a**. In the same manner, make 8 **Block 4b** using **Unit 10b**. **Fig. 18**

Fig. 18



Block 4a - Make 8



Block 4b - Make 8

All possible care has been taken to assure the accuracy of this pattern. We are not responsible for printing errors or the manner in which individual work varies. Please read the instructions carefully before starting this project.