



Featuring Gloriosa Garden by Jane Sassaman

On The Spot Quilt

Finished Size: 62" x 74" (1.57m x 1.88m)

Project designed by Swirly Girls Design

Purchase pattern at swirlygirlsdesign.com

Technique: Pieced and Applique | Skill Level: Advanced Beginner



On The Spot Quilt

Fabric Requirements

DESIGN	COLOR	ITEM ID	YARDAGE
(A) Double Dots	GREEN	PWJS151.GREEN	1/3 yard (0.30m)
(B) Flower Pop	RED	PWJS152.RED	1/3 yard (0.30m)
(C) Gloriosa Lily	PURPLE	PWJS153.PURPLE	1/3 yard (0.30m)
(D) Johnny Jump Ups	BROWN	PWJS154.BROWN	1/3 yard (0.30m)
(E) Primrose	BLACK	PWJS157.BLACK	1/3 yard (0.30m)
(F) Soft Triangle	PURPLE	PWJS158.PURPLE	1 5/8 yards (1.49m)
(G) Swag	GREEN	PWJS159.GREEN*	1 5/8 yards (1.49m)
(H) Spot	SKY	GP70.SKYXX	1 3/4 yards (1.60m)

* includes binding

Backing (Purchased Separately)

44" (1.12m) wide

Power Flower

BROWN

PWJS156.BROWN

4 1/4 yards (3.89m)

OR

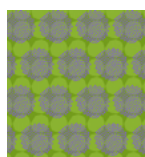
108" (2.74m) wide

Millefiore

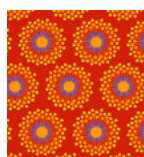
PASTEL

QBG006.PASTEL

2 1/4 yards (2.06m)



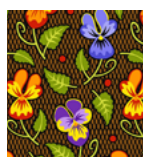
(A)



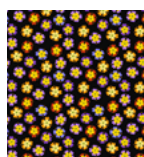
(B)



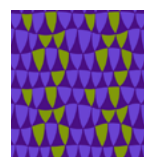
(C)



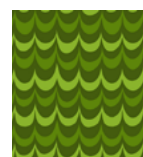
(D)



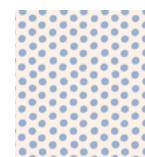
(E)



(F)



(G)



(H)



Backing
44"



Backing
108"

If kitting, refer to the final pattern for yardage amounts, it is recommended that a sample is made to confirm accuracy.