

*Free Spirit* 



Featuring Golden Touch by Sarah Szczepanski

## Orbit Quilt

Finished Size: 49" x 63" (1.24m x 1.60m)

*Project designed by Sew Many Creations*

*Purchase pattern at [sewmanycreationsny.com](http://sewmanycreationsny.com)*

**Technique:** Pieced with template or Pathways Ruler | **Skill Level:** Advanced Beginner

## Fabric Requirements

DESIGN	COLOR	ITEM ID	YARDAGE
(A) Outer Orbit	PLATINUM	PWSS027.PLATINUM	$\frac{2}{3}$ yard (0.61m)
(B) Flourish	CLAY	PWSS028.CLAY	$\frac{2}{3}$ yard (0.61m)
(C) Interwoven	MIST	PWSS029.MIST	$\frac{2}{3}$ yard (0.61m)
(D) Sprinkled	NICKEL	PWSS030.NICKEL*	1 $\frac{1}{4}$ yards (1.14m)
(E) Ground Work	BRONZE	PWSS031.BRONZE	$\frac{2}{3}$ yard (0.61m)
(F) Orbit	OYSTER	PWSS032.OYSTER	$\frac{2}{3}$ yard (0.61m)
(G) Rusted Matter	RUST	PWSS033.RUST	$\frac{2}{3}$ yard (0.61m)
(H) Bronze Coins	BRONZE	PWSS034.BRONZE	$\frac{2}{3}$ yard (0.61m)
(I) Silver Strands	SILVER	PWSS035.SILVER	$\frac{2}{3}$ yard (0.61m)
(J) Summer Rust	GOLDEN	PWSS036.GOLDEN	$\frac{2}{3}$ yard (0.61m)
(K) Golden Coins	GOLD	PWSS037.GOLD	$\frac{2}{3}$ yard (0.61m)
(L) Copper Strands	COPPER	PWSS038.COPPER	$\frac{2}{3}$ yard (0.61m)
(M) Golden Rod	MITHRIL	PWSS039.MITHRIL	$\frac{2}{3}$ yard (0.61m)
(N) Interlaced	STEEL	PWSS040.STEEL	$\frac{2}{3}$ yard (0.61m)
(O) Shot Cotton	Galvanized	SCGP130.GALVANIZED	$\frac{1}{2}$ yard (0.46m)
(P) Shot Cotton	Shadow	SCGP108.SHADOW	$\frac{1}{2}$ yard (0.46m)
(Q) Shot Cotton	Nutmeg	SCGP102.NUTMEG	$\frac{1}{2}$ yard (0.46m)
(R) Shot Cotton	Paprika	SCGP101.PAPRIKA	$\frac{1}{2}$ yard (0.46m)
(S) Shot Cotton	Plum	SCGP119.PLUM	$\frac{1}{2}$ yard (0.46m)

\* includes binding

## Backing (Purchased Separately)

**44" (1.12m) wide**

Orbit

**OR**

**108" (2.74m) wide**

OYSTER

PWSS032.OYSTER

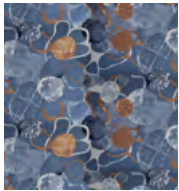
3 $\frac{3}{4}$  yards (3.43m)

1 $\frac{3}{4}$  yards (1.60m)

*Fabric Swatches on next page...*

*If kitting, refer to the final pattern for yardage amounts, it is recommended that a sample is made to confirm accuracy.*

## Fabric Swatches



(A)



(B)



(C)



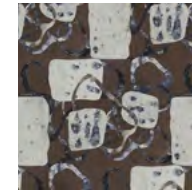
(D)



(E)



(F)



(G)



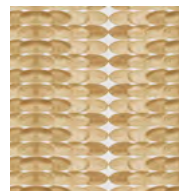
(H)



(I)



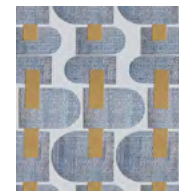
(J)



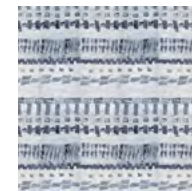
(K)



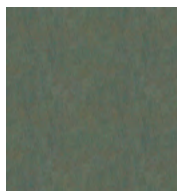
(L)



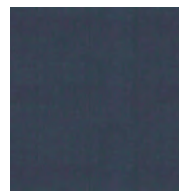
(M)



(N)



(O)



(P)



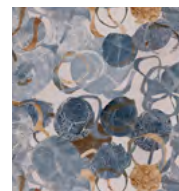
(Q)



(R)



(S)



**Backing**  
44"