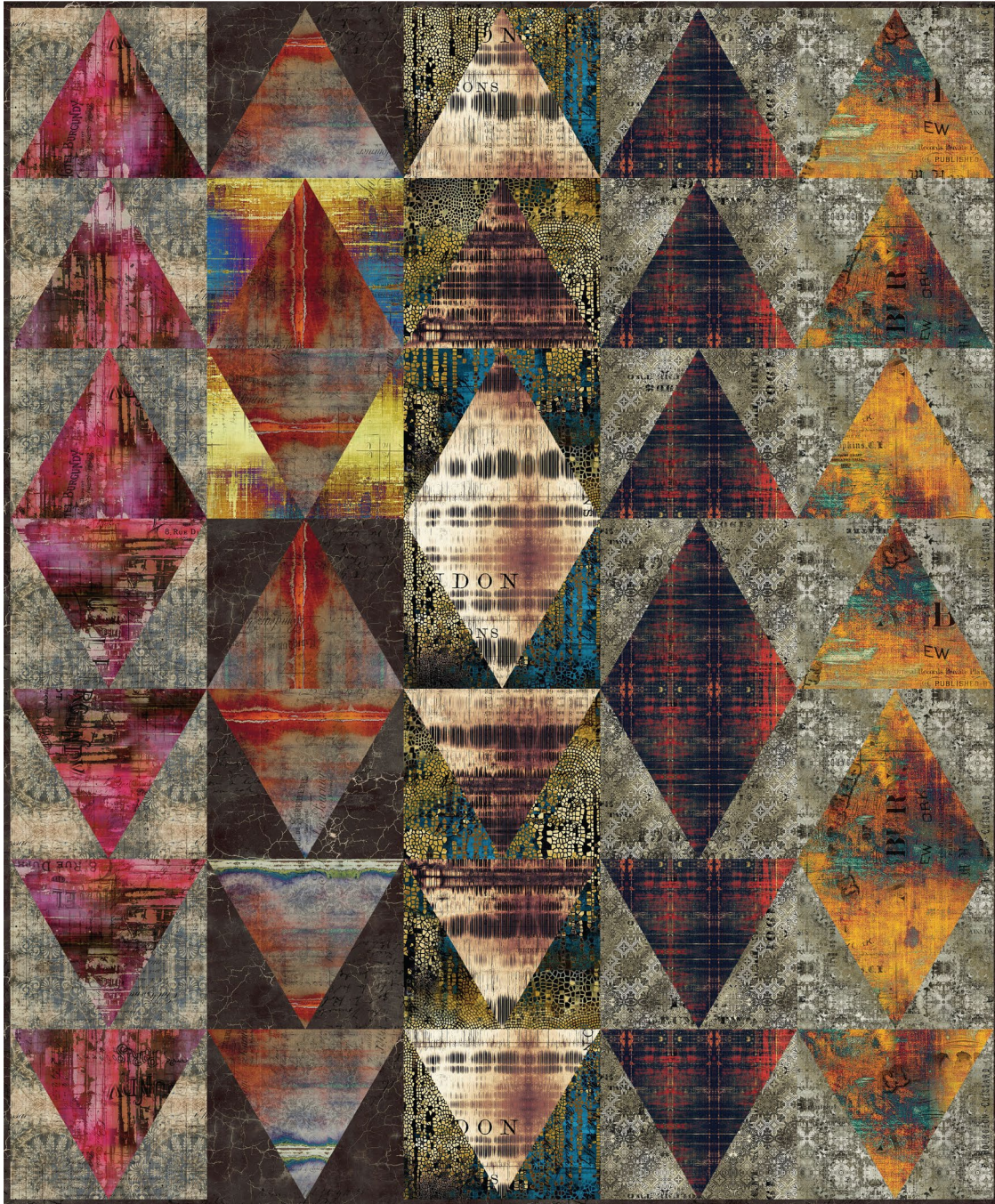


Free Spirit



Featuring Abandoned I and II by Tim Holtz

Magical Mountains Quilt

Finished Size: 45" x 55" (1.14m x 1.40m)

Project designed by Everyday Stitches

Purchase pattern at everydaystitches.com

Technique: Pieced with 60 Degree Triangle Ruler | Skill Level: Intermediate

freespiritfabrics.com

Fabric Requirements

DESIGN	COLOR	ITEM ID	YARDAGE
(A) Hotel Burgundy	VINEYARD	PWTH145.VINEYARD	$\frac{3}{8}$ yard (0.34m)
(B) Dyed Stripe	MULTI	PWTH143.MULTI	$\frac{3}{8}$ yard (0.34m)
(C) London Gridlock	NEUTRAL	PWTH127.NEUTRAL	$\frac{3}{8}$ yard (0.34m)
(D) Saint Concerto	RUST	PWTH136.RUST	$\frac{3}{8}$ yard (0.34m)
(E) Urban Grunge	PATINA	PWTH134.PATINA	$\frac{3}{8}$ yard (0.34m)
(F) Muted Medallions	INDIGO	PWTH141.INDIGO	$\frac{5}{8}$ yard (0.57m)
(G) Cracked Shadow	BLACK	PWTH128.BLACK*	1 $\frac{1}{8}$ yards (1.03m)
(H) Fractured Mosaic	INDIGO	PWTH130.INDIGO	$\frac{5}{8}$ yard (0.57m)
(I) Du Theater	NEUTRAL	PWTH139.NEUTRAL	$\frac{5}{8}$ yard (0.57m)
(J) Faded Tile	NEUTRAL	PWTH129.NEUTRAL	$\frac{5}{8}$ yard (0.57m)
(K) Portland Street	PATINA	PWTH131.PATINA	$\frac{1}{4}$ yard (0.23m)

* includes binding

Backing (Purchased Separately)

44" (1.12m) wide

Portland Street

Patina

PWTH131.PATINA

2 $\frac{3}{4}$ yards (2.51m)

OR

108" (2.74m) wide

Time Return

Neutral

QBTH011.NEUTRAL

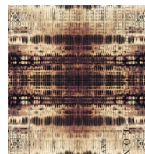
1 $\frac{1}{2}$ yards (1.37m)



(A)



(B)



(C)



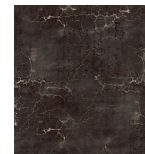
(D)



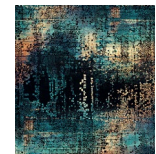
(E)



(F)



(G)



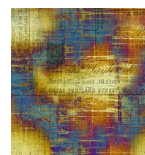
(H)



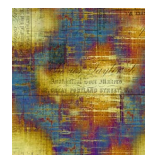
(I)



(J)



(K)



Backing
44"



Backing
108"

If kitting, refer to the final pattern for yardage amounts, it is recommended that a sample is made to confirm accuracy.