

Featuring Palette Blue by Tim Holtz

Double Wedding Ring Quilt - Blue

Finished Size: 69" x 80" (1.75m x 2.03m)

Project designed by Quiltsmart Colored by Kerri Thomson

Purchase pattern at quiltsmart.com

Technique: Finished edge fusible applique and Sew and Flip corners | Skill Level: Advanced Beginner



Double Wedding Ring Quilt - Blue

Fabric Requirements

DESIGN	COLOR	ITEM ID	YARDAGE
(A) Blue Collage	Blue	PWTH280.BLUE	5/8 yard (0.57m)
(B) Blue Stamps	Blue	PWTH281.BLUE	1 1/8 yards (1.03m)
(C) Blue Tickest	Blue	PWTH282.BLUE*	1 1/4 yards (1.14m)
(D) Blue Map	Blue	PWTH283.BLUE	1/2 yard (0.46m)
(E) Blue Script	Blue	PWTH284.BLUE	1 1/8 yards (1.03m)
(F) Blue Eggs	Blue	PWTH285.BLUE	1 1/8 yards (1.03m)
(G) Blue Numbers	Blue	PWTH286.BLUE	5/8 yard (0.57m)
(H) Blue Tapestry	Blue	PWTH287.BLUE	5/8 yard (0.57m)
(I) Blue Tiny Print	Blue	PWTH288.BLUE	5/8 yard (0.57m)
(J) Blue Vintage	Blue	PWTH289.BLUE	1/2 yard (0.46m)
(K) Tailored	Linen	PWTH066.LINEN	3/4 yard (0.69m)
(L) Horticulture	Aqua	PWTH094.AQUAX	1 1/8 yards (1.03m)
(M) Dictionary	Neutral	PWTH008.NEUTR	3/4 yard (0.69m)

* includes binding

Backing (Purchased Separately)

44" (1.12m) wide

Blue Script

Blue

PWTH284.BLUE

5 yards (4.57m)

OR

108" (2.74m) wide

Receipt

Aqua

QBTH010.AQUA

2 1/4 yards (2.06m)



(A)



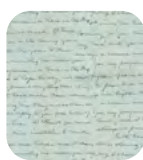
(B)



(C)



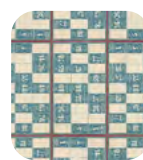
(D)



(E)



(F)



(G)



(H)



(I)



(J)



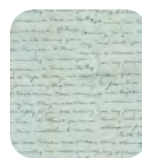
(K)



(L)



(M)



Backing
44"



Backing
108"

If kitting, refer to the final pattern for yardage amounts, it is recommended that a sample is made to confirm accuracy.