



Free Spirit

## Dappled Pines

Featuring Palette Green by Tim Holtz

The Palette Green fabrics of Tim Holtz shimmer and shine, highlighting the greens of spring among the pines.

**Collection:** Palette Green by Tim Holtz

**Technique:** Pieced  
(8-at-a-time HST method)

**Skill Level:** Advanced Beginner

**Finished Size:**  
67<sup>3</sup>/<sub>8</sub>" x 84<sup>3</sup>/<sub>8</sub>" (1.71m x 2.14m)

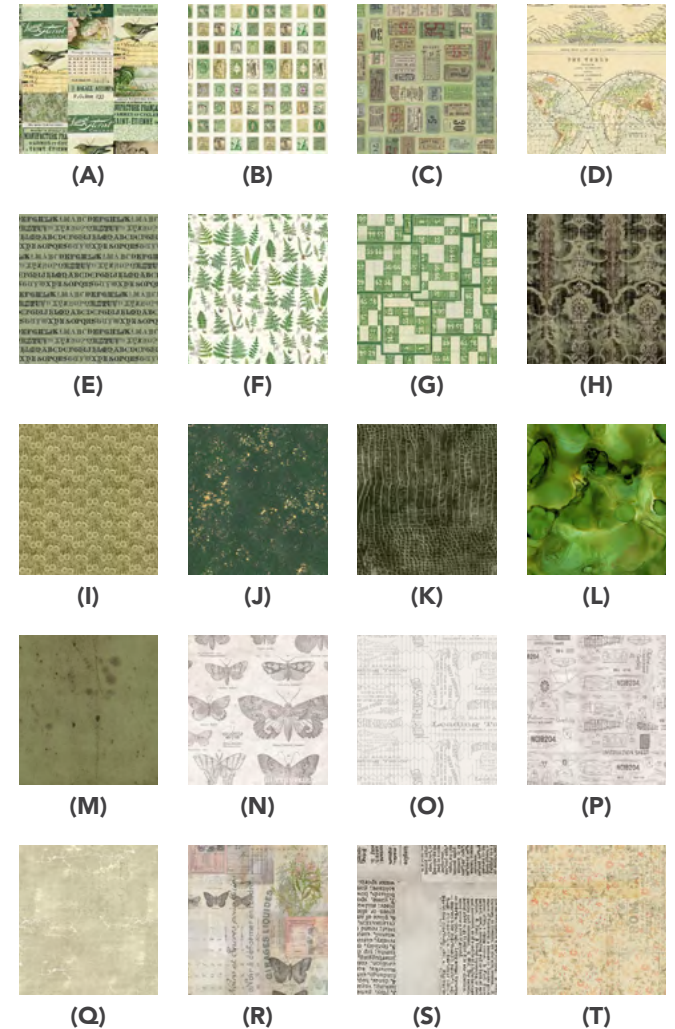
**Finished Sizes:**  
Finished Block Size:  
24" square (60.96cm square)

*Dappled Pines Fabric Requirements. The Dappled Pines Vintage Pattern is available and exclusive to Palette Charter Members. [Click here to find a Charter Member.](#)*

Project designed by Kerri Thomson | Tech edited by Alison M. Schmidt

## Fabric Requirements

DESIGN	COLOR	ITEM ID	YARDAGE
<b>(A) Green Collage</b>	Green	PWTH260.GREEN	3/8 yard (0.34m)
<b>(B) Green Stamps</b>	Green	PWTH261.GREEN	3/8 yard (0.34m)
<b>(C) Green Tickets</b>	Green	PWTH262.GREEN	3/8 yard (0.34m)
<b>(D) Green Map</b>	Green	PWTH263.GREEN	1 1/8 yards (1.03m)
<b>(E) Green Typography</b>	Green	PWTH264.GREEN	3/8 yard (0.34m)
<b>(F) Green Ferns</b>	Green	PWTH265.GREEN	1/2 yard (0.46m)
<b>(G) Green Numbers</b>	Green	PWTH266.GREEN	1/2 yard (0.46m)
<b>(H) Green Tapestry</b>	Green	PWTH267.GREEN*	1 1/4 yards (1.14m)
<b>(I) Green Tiny Print</b>	Green	PWTH268.GREEN	3/8 yard (0.34m)
<b>(J) Green Vintage</b>	Green	PWTH269.GREEN	3/4 yard (0.69m)
<b>(K) Worn Croc</b>	Bayou	PWTH020.BAYOU	1/3 yard (0.30m)
<b>(L) Alchemy</b>	Elixir	PWTH177.ELIXIR	1/3 yard (0.30m)
<b>(M) Provisions</b>	Sage	PWTH115.8SAGE	1/4 yard (0.23m)
<b>(N) Butterflies</b>	Parchment	PWTH004.PARCHMENT	3/8 yard (0.34m)
<b>(O) Tailored</b>	Linen	PWTH066.LINEN	1/2 yard (0.46m)
<b>(P) Model Aeroplanes</b>	Parchment	PWTH174.PARCHMENT	3/8 yard (0.34m)
<b>(Q) Cracked Shadow</b>	Quartz	PWTH128.QUARTZ	3/8 yard (0.34m)
<b>(R) Botanical</b>	Multi	PWTH028.8MULT	1/2 yard (0.46m)
<b>(S) Dictionary</b>	Neutral	PWTH008.NEUTR	1/2 yard (0.46m)
<b>(T) From Camden</b>	Multi	PWTH092.MULTI	1/2 yard (0.46m)



continued...

## Fabric Requirements (continued...)

DESIGN	COLOR	ITEM ID	YARDAGE
<b>(U) Multiplication Table</b>	Parchment	PWTH106.PARCHMENT	½ yard (0.46m)
<b>(V) Horticulture</b>	Aqua	PWTH094.AQUAX	⅝ yard (0.57m)
<b>(W) Rose Parcel</b>	Multi	PWTH035.8MULT	⅝ yard (0.57m)

\* includes binding

## Backing (Purchased Separately)

### 44" (1.12m) wide

Green Tiny Print                      Green                      PWTH268.GREEN                      5¼ yards (4.80m)

**OR**  
**108" (2.74m) wide**  
 Expedition                      Multi                      QBTH007.MULTI                      2⅞ yards (1.94m)

## Additional Recommendations

- 100% cotton thread in colors to match
- 76" x 93" (1.93m x 2.36m) batting



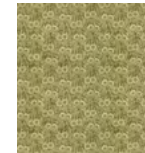
(U)



(V)



(W)



Backing  
44"



Backing  
108"