



Featuring Halloween Palette Seasonal by Tim Holtz

## Witch's Hat Quilt

Finished Size: 62" x 79" (1.57m x 2.0m)

Project designed by Jennifer Long - Sew a Story

Purchase pattern at [sewastory.com](http://sewastory.com)

Technique: Pieced & Applique | Skill Level: Intermediate

## Fabric Requirements

DESIGN	COLOR	ITEM ID	YARDAGE
(A) Halloween Remnants	Halloween	PWTH331.HALLOWEEN	3 $\frac{5}{8}$ yards (3.31m)
(B) Halloween Entangled	Halloween	PWTH332.HALLOWEEN	1 $\frac{3}{4}$ yards (1.60m)
(C) Halloween Collage	Halloween	PWTH330.HALLOWEEN	1 yard (0.91m)
(D) Halloween Moth Study	Halloween	PWTH333.HALLOWEEN	1 yard (0.91m)
(E) Halloween Gothic Tapestry	Halloween	PWTH334.HALLOWEEN	$\frac{3}{8}$ yard (0.34m)
(F) Neutral Wood	Neutral	PWTH256.NEUTRAL*	1 yard (0.91m)
(G) Orange Tiny Print	Orange	PWTH238.ORANGE	F8
(H) Yellow Specimen	Yellow	PWTH244.YELLOW	F8
(I) Neutral Map	Neutral	PWTH253.NEUTRAL	F8
(J) Neutral Marble	Neutral	PWTH259.NEUTRAL	F8
(K) Neutral Gears	Neutral	PWTH255.NEUTRAL	F8
(L) Orange Vintage	Orange	PWTH239.ORANGE	F8
(M) Neutral Wallpaper	Neutral	PWTH257.NEUTRAL	F8
(N) Neutral Cobwebs	Neutral	PWTH150.NEUTRAL	F8
(O) Black Foreboding	Black	PWTH152.BLACK	F8
(P) Neutral Beloved	Neutral	PWTH149.NEUTRAL	F8

\* includes binding

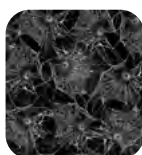
## Backing (Purchased Separately)

**44" (1.12m) wide**

Halloween Collage	Halloween	PWTH330.HALLOWEEN	5 yards (4.57m)
-------------------	-----------	-------------------	-----------------



(A)



(B)



(C)



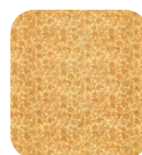
(D)



(E)



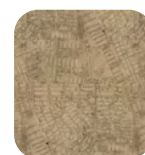
(F)



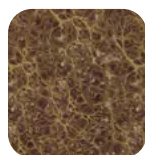
(G)



(H)



(I)



(J)



(K)



(L)



(M)



(N)



(O)



(P)



Backing  
44"

*If kitting, refer to the final pattern for yardage amounts,  
it is recommended that a sample is made to confirm accuracy.*