



Featuring Palette Teal by Tim Holtz

Double Wedding Ring Quilt - Teal

Finished Size: 69" x 80" (1.75m x 2.03m)

Project designed by Quiltsmart Colored by Kerri Thomson

Purchase pattern at quiltsmart.com

Technique: Finished edge fusible applique and Sew and Flip corners | Skill Level: Advanced Beginner



Double Wedding Ring Quilt - Teal

Fabric Requirements

DESIGN	COLOR	ITEM ID	YARDAGE
(A) Teal Collage	Teal	PWTH270.TEAL	5/8 yard (0.57m)
(B) Teal Stamps	Teal	PWTH271.TEAL	1 1/8 yards (1.03m)
(C) Teal Tickets	Teal	PWTH272.TEAL*	1 1/4 yards (1.14m)
(D) Teal Map	Teal	PWTH273.TEAL	1 1/8 yards (1.03m)
(E) Teal Tiles	Teal	PWTH274.TEAL	1/2 yard (0.46m)
(F) Teal Ephemera	Teal	PWTH275.TEAL	5/8 yard (0.57m)
(G) Teal Butterflies	Teal	PWTH276.TEAL	3/4 yard (0.69m)
(H) Teal Wallpaper	Teal	PWTH277.TEAL	5/8 yard (0.57m)
(I) Teal Tiny Print	Teal	PWTH278.TEAL	1 1/8 yards (1.03m)
(J) Teal Marble	Teal	PWTH279.TEAL	5/8 yard (0.57m)
(K) Horticulture	Aqua	PWTH094.AQUAX	3/4 yard (0.69m)
(L) Botanical	Multi	PWTH028.8MULT	1 1/8 yards (1.03m)
(M) Dropcloth	Multi	PWTH137.MULTI	1/2 yard (0.46m)

* includes binding

Backing (Purchased Separately)

44" (1.12m) wide

Teal Tiny Print

Teal

PWTH278.TEAL

5 yards (4.57m)

OR

108" (2.74m) wide

Receipt

Aqua

QBTH010.AQUA

2 1/4 yards (2.06m)



(A)



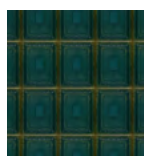
(B)



(C)



(D)



(E)



(F)



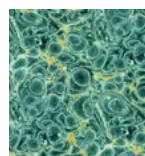
(G)



(H)



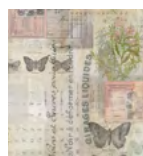
(I)



(J)



(K)



(L)



(M)



Backing
44"



Backing
108"

*If kitting, refer to the final pattern for yardage amounts,
it is recommended that a sample is made to confirm accuracy.*