

Featuring Palette Pink, Red, Orange, Yellow, Neutral, Green, Teal, Blue and Indigo by Tim Holtz

# Double Wedding Ring Quilt - 9 Palette

Finished Size: 92" x 92" (2.34m x 2.34m)

*Project designed by Quiltsmart Colored by Kerri Thomson*

*Purchase pattern at [quiltsmart.com](http://quiltsmart.com)*

**Technique:** Finished edge fusible applique and Sew and Flip corners | **Skill Level:** Advanced Beginner



# Double Wedding Ring Quilt

## 9 pallet

### Fabric Requirements

DESIGN	COLOR	ITEM ID	YARDAGE
(A) Pink Typography	Pink	PWTH214.PINK	$\frac{3}{4}$ yard (0.69m)
(B) Pink Ephemera	Pink	PWTH215.PINK	$\frac{1}{2}$ yard (0.46m)
(C) Pink Wallpaper	Pink	PWTH217.PINK	$\frac{3}{4}$ yard (0.69m)
(D) Pink Toile	Pink	PWTH218.PINK	$\frac{3}{4}$ yard (0.69m)
(E) Red Tickets	Red	PWTH222.RED	$\frac{1}{2}$ yard (0.46m)
(F) Red Ledger	Red	PWTH225.RED	$\frac{3}{4}$ yard (0.69m)
(G) Orange Map	Orange	PWTH233.ORANGE*	$\frac{3}{4}$ yard (0.69m)
(H) Orange Sketchbook	Orange	PWTH234.ORANGE	$\frac{3}{4}$ yard (0.69m)
(I) Orange Ephemera	Orange	PWTH235.ORANGE	$\frac{1}{2}$ yard (0.46m)
(J) Orange Tiny Print	Orange	PWTH238.ORANGE	$\frac{1}{2}$ yard (0.46m)
(K) Yellow Wallpaper	Yellow	PWTH247.YELLOW	$\frac{1}{2}$ yard (0.46m)
(L) Neutral Map	Neutral	PWTH253.NEUTRAL	$\frac{1}{2}$ yard (0.46m)
(M) Neutral Typewriter	Neutral	PWTH254.NEUTRAL	$\frac{3}{4}$ yard (0.69m)
(N) Neutral Wallpaper	Neutral	PWTH257.NEUTRAL	$\frac{3}{4}$ yard (0.69m)
(O) Neutral Tiny Print	Neutral	PWTH258.NEUTRAL	$\frac{2}{3}$ yard (0.61m)
(P) Green Tickets	Green	PWTH262.GREEN	$\frac{1}{2}$ yard (0.46m)
(Q) Teal Ephemera	Teal	PWTH275.TEAL	$\frac{1}{2}$ yard (0.46m)
(R) Teal Wallpaper	Teal	PWTH277.TEAL	$\frac{3}{4}$ yard (0.69m)
(S) Teal Tiny Print	Teal	PWTH278.TEAL	$\frac{3}{4}$ yard (0.69m)
(T) Blue Script	Blue	PWTH284.BLUE	$\frac{3}{4}$ yard (0.69m)
(U) Blue Tapestry	Blue	PWTH287.BLUE	$\frac{1}{2}$ yard (0.46m)
(V) Indigo Ledger	Indigo	PWTH294.INDIGO	$\frac{3}{4}$ yard (0.69m)
(W) Indigo Wallpaper	Indigo	PWTH297.INDIGO	$\frac{5}{8}$ yard (0.57m)
(X) Indigo Tiny Print	Indigo	PWTH298.INDIGO	$\frac{2}{3}$ yard (0.61m)

\* includes binding

### Backing (Purchased Separately)

#### 44" (1.12m) wide

Blue Eggs	Blue	PWTH285.BLUE	8 $\frac{1}{3}$ yards (7.62m)
-----------	------	--------------	-------------------------------

OR

#### 108" (2.74m) wide

Botanical	Palette	QBTH013.PALETTE	2 $\frac{7}{8}$ yards (2.63m)
-----------	---------	-----------------	-------------------------------

Fabric Swatches on next page...

*If kitting, refer to the final pattern for yardage amounts,  
it is recommended that a sample is made to confirm accuracy.*



### Fabric Swatches



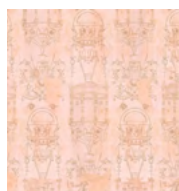
(A)



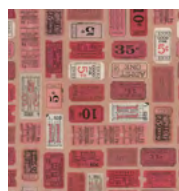
(B)



(C)



(D)



(E)



(F)



(G)



(H)



(I)



(J)



(K)



(L)



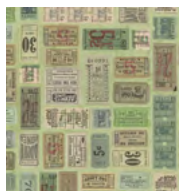
(M)



(N)



(O)



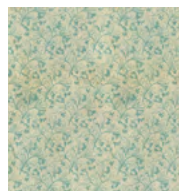
(P)



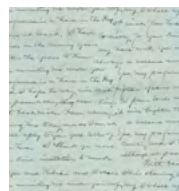
(Q)



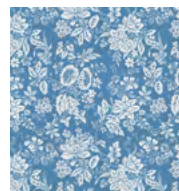
(R)



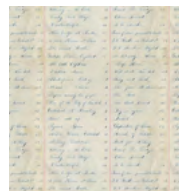
(S)



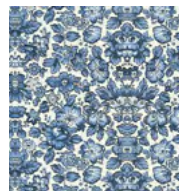
(T)



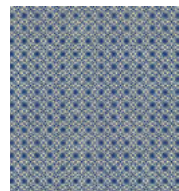
(U)



(V)



(W)



(X)



Backing  
44"



Backing  
108"