



Featuring Palette Teal, Blue and Indigo by Tim Holtz

Posh Snowball Quilt - Teal, Blue & Indigo

Finished Size: 54" x 65" (1.37m x 1.65m)

Project designed by Sew Kind of Wonderful-re-colored by FreeSpirit Fabrics

Purchase pattern at sewkindofwonderful.com

Technique: Pieced using the Sew Kind of Wonderful Quick Curve Ruler and Quick Curve Mini Ruler

Skill Level: Advanced Beginner



Posh Snowball Quilt Teal, Blue & Indigo

Fabric Requirements

| DESIGN | COLOR | ITEM ID | YARDAGE |
|---------------------------|--------|----------------|------------------|
| (A) Tim Holtz 10 Piece FQ | Teal | FB6FQTH.TEAL | 1 Bundle |
| (B) Tim Holtz 10 Piece FQ | Blue | FB6FQTH.BLUE | 1 Bundle |
| (C) Tim Holtz 10 Piece FQ | Indigo | FB6FQTH.INDIGO | 1 Bundle |
| (D) Tailored | Linen | PWTH066.LINEN | 1½ yards (1.49m) |
| (E) Receipt | Aqua | PWTH102.AQUA* | ½ yard (0.46m) |

* includes binding

Backing (Purchased Separately)

44" (1.12m) wide

Piano Sorte

OR

108" (2.74m) wide

Receipt

Patina

PWTH138.PATINA

3½ yards (3.20m)

Aqua

QBTH010.AQUA

1¾ yards (1.60m)



Fat Quarter

(A)



Fat Quarter

(B)



Fat Quarter

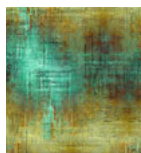
(C)



(D)



(E)



Backing
44"



Backing
108"

*If kitting, refer to the final pattern for yardage amounts,
it is recommended that a sample is made to confirm accuracy.*