



Featuring Cottage Cloth by Sew Kind of Wonderful

# Posh Snowball Quilt

Finished Size: 61" (1.55m) Square

Project designed by Helen Robinson - Sew Kind of Wonderful

Purchase pattern at [sewkindofwonderful.com](http://sewkindofwonderful.com)

Technique: Pieced using the SKW Quick Curve Ruler and QCR Mini | Skill Level: Advanced Beginner



# Posh Snowball Quilt

## Fabric Requirements

DESIGN	COLOR	ITEM ID	YARDAGE
(A) Abby	Dawn	PWSK038.DAWN	½ yard (0.46m)
(B) Abby	Dusk	PWSK038.DUSK	½ yard (0.46m)
(C) Buttercup	Dawn	PWSK039.DAWN	½ yard (0.46m)
(D) Cameo	Dusk	PWSK040.DUSK	½ yard (0.46m)
(E) Dottie	Dusk	PWSK041.DUSK	½ yard (0.46m)
(F) Gable	Dawn	PWSK042.DAWN	½ yard (0.46m)
(G) Gable	Dusk	PWSK042.DUSK	½ yard (0.46m)
(H) Lakeview	Dawn	PWSK043.DAWN*	1 yard (0.91m)
(I) Heather	Dusk	PWSK044.DUSK	½ yard (0.46m)
(J) Orchard	Dawn	PWSK045.DAWN	½ yard (0.46m)
(K) Trellis	Dusk	PWSK046.DUSK	½ yard (0.46m)
(L) Poppy	Dawn	PWSK047.DAWN	½ yard (0.46m)
(M) Waverly	Dusk	PWSK048.DUSK	¼ yard (0.23m)
(N) Country Side	Dawn	PWSK049.DAWN	¼ yard (0.23m)
(O) Dune	Dusk	PWSK050.DUSK	¼ yard (0.23m)
(P) Hillcrest	Dusk	PWSK051.DUSK	1 yard (0.91m)
(Q) Lookout	Dawn	PWSK052.DAWN	¼ yard (0.23m)
(R) Manor	Dawn	PWSK053.DAWN	¼ yard (0.23m)

\* includes binding

## Backing (Purchased Separately)

### 44" (1.12m) wide

Abby Dawn PWSK038.DAWN 4 yards (3.66m)

OR

### 108" (2.74m) wide

2 yards (1.83m)

Fabric Swatches on next page...

*If kitting, refer to the final pattern for yardage amounts, it is recommended that a sample is made to confirm accuracy.*

## Fabric Swatches



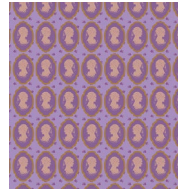
(A)



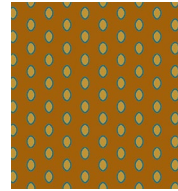
(B)



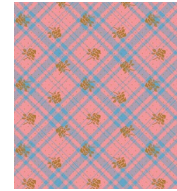
(C)



(D)



(E)



(F)



(G)



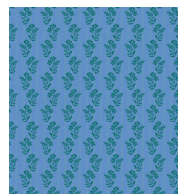
(H)



(I)



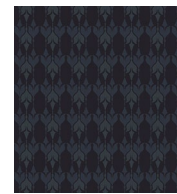
(J)



(K)



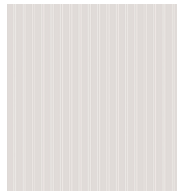
(L)



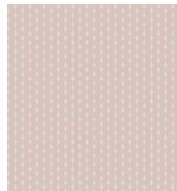
(M)



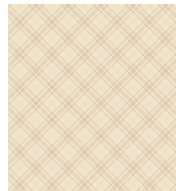
(N)



(O)



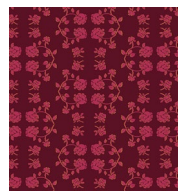
(P)



(Q)



(R)



**Backing  
44"**