

*Free Spirit* 



Featuring Polar Seas by Katy Tanis-Daughter Earth

## Puffin Star Quilt

Finished Size: 52<sup>1</sup>/<sub>2</sub>" x 52<sup>1</sup>/<sub>2</sub>" (1.33m x 1.33m)

*Project designed by Art East Quilting Co.*

*Purchase pattern at [arteastquiltingco.com](http://arteastquiltingco.com)*

Technique: Pieced | Skill Level: Advanced Beginner

## Fabric Requirements

DESIGN	COLOR	ITEM ID	YARDAGE
(A) Squids and Fish	White	PWKT024.XWHITE	1/8 yard (0.11m)
(B) Wave Surfing Seals	Water	PWKT025.XWATER	2 1/3 yards (2.13m)
(C) Swirling Seas	Blue	PWKT026.XBLUE	1/4 yard (0.23m)
(D) Fish School	White	PWKT028.XWHITE	1/3 yard (0.30m)
(E) Echo Dots	White	PWKT031.XWHITE	1/2 yard (0.46m)
(F) Penguin Playground	Turquoise	PWKT032.XTURQUOISE	1/3 yard (0.30m)
(G) Watercolor Waves	Dark Blue	PWKT033.XDKBLUE*	1 yard (0.91m)
(H) Designer Essential Solid	Crush	CSFSESS.CRUSH	1/8 yard (0.11m)
(I) Designer Essential Solid	Mesa	CSFSESS.MESAX	1/8 yard (0.11m)
(J) Designer Essential Solid	Twinkle	CSFSESS.TWINKLE	1/8 yard (0.11m)
(K) Designer Essential Solid	Marigold	CSFSESS.MARIGOLD	1/8 yard (0.11m)
(L) Designer Essential Solid	Silver	CSFSESS.SILVE	1/8 yard (0.11m)
(M) Designer Essential Solid	Manatee	CSFSESS.MANAT	1/8 yard (0.11m)
(N) Designer Essential Solid	Licorice	CSFSESS.LICOR	1/8 yard (0.11m)

\* includes binding

## Backing (Purchased Separately)

**44" (1.12m) wide**

Penguins and Puffins

Black

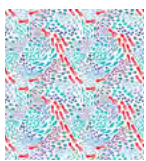
PWKT034.XBLACK

3 1/3 yards (3.05m)

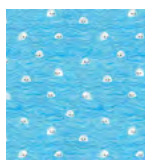
**OR**

**108" (2.74m) wide**

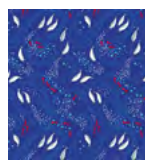
1 3/4 yards (1.60m)



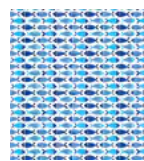
(A)



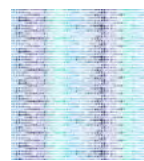
(B)



(C)



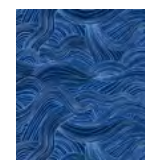
(D)



(E)



(F)



(G)



(H)



(I)



(J)



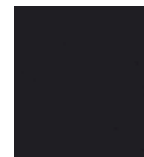
(K)



(L)



(M)



(N)



Backing  
44"

*If kitting, refer to the final pattern for yardage amounts, it is recommended that a sample is made to confirm accuracy.*