

*Free Spirit*



Featuring Laboratory by Tim Holtz

# Pumpkin Patch Quilt

Finished Size: 62" x 74" (1.57m x 1.88m)

Project designed by Marcea Owen - Cotton Street Commons

Purchase pattern at [cottonstreetcommons.com](http://cottonstreetcommons.com)

Technique: Pieced | Skill Level: Advanced Beginner

[freespiritfabrics.com](http://freespiritfabrics.com)



# Pumpkin Patch Quilt

## Fabric Requirements

DESIGN	COLOR	ITEM ID	YARDAGE
(A) Anatomy	Neutral	PWTH181.NEUTRAL	FQ (45.72cm x 53.34cm)
(B) Formula	Neutral	PWTH183.NEUTRAL	FQ (45.72cm x 53.34cm)
(C) Specimen	Neutral	PWTH184.NEUTRAL	FQ (45.72cm x 53.34cm)
(D) Forgotten	Orange	PWTH185.ORANGE	FQ (45.72cm x 53.34cm)
(E) Periodic	Multi	PWTH186.MULTI	FQ (45.72cm x 53.34cm)
(F) Experiment	Green	PWTH187.GREEN	F8 (22.86cm x 53.34cm)
(G) Molecular	Orange	PWTH188.ORANGE	FQ (45.72cm x 53.34cm)
(H) Composition	Black	PWTH189.BLACK	FQ (45.72cm x 53.34cm)
(I) Creepy Clippings	Neutral	PWTH190.NEUTRAL	3 yards (2.74m)
(J) Tattered	Neutral	PWTH191.NEUTRAL	FQ (45.72cm x 53.34cm)
(K) Flourish	Orange	PWTH192.ORANGE	FQ (45.72cm x 53.34cm)
(L) Tapestry	Purple	PWTH193.PURPLE	F8 (22.86cm x 53.34cm)
(M) Striped	Black	PWTH194.BLACK*	¾ yard (0.69m)
(N) Cobwebs	Neutral	PWTH150.NEUTRAL	F8 (22.86cm x 53.34cm)
(O) Alchemy	Black	PWTH146.BLACK	FQ (45.72cm x 53.34cm)
(P) Writing Specimen	Sienna	PWTH135.SIENNA	FQ (45.72cm x 53.34cm)
(Q) Crossbones	Black	PWTH151.BLACK	FQ (45.72cm x 53.34cm)
(R) Spellbound	Orange	PWTH148.ORANGE	FQ (45.72cm x 53.34cm)
(S) Beloved	Neutral	PWTH149.NEUTRAL	FQ (45.72cm x 53.34cm)

\* includes binding

## Backing (Purchased Separately)

### 44" (1.12m) wide

Curator Multi PWTH182.MULTI 4½ yards (4.11m)

OR

### 108" (2.74m) wide

Dictionary Neutral QBTH006.NEUTRAL 2¼ yards (2.06m)

*Fabric Swatches on next page...*

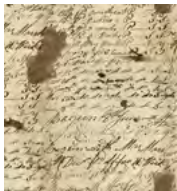
*If kitting, refer to the final pattern for yardage amounts,  
it is recommended that a sample is made to confirm accuracy.*



## Fabric Swatches



(A)



(B)



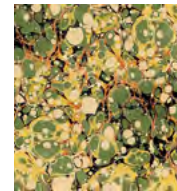
(C)



(D)



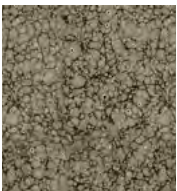
(E)



(F)



(G)



(H)



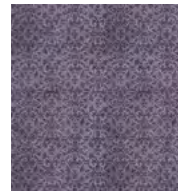
(I)



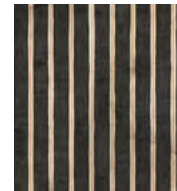
(J)



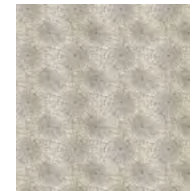
(K)



(L)



(M)



(N)



(O)



(P)



(Q)



(R)



(S)



Backing  
44"



Backing  
108"