



Featuring the Kaffe Fassett Collective

Cathedral Tiles Mystery Quilt - Delft PUZZLE 2

Project designed by Liza Lucy

Technique: Pieced | **Skill Level:** Advanced Beginner

All possible care has been taken to assure the accuracy of this pattern. We are not responsible for printing errors or the manner in which individual work varies. Please read the instructions carefully before starting this project.





Cathedral Tiles Mystery Quilt - Delft

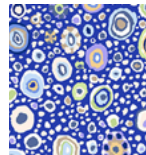
PUZZLE 2

Fabric Requirements

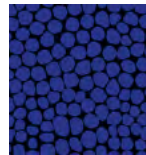
DESIGN	COLOR	ITEM ID	YARDAGE
(A) Carpet Cookies	Blue	PWGP192.BLUE	½ yard (0.46m)
(B) Roman Glass	Blue and White	GP01.BLWH	⅝ yard (0.57m)
(C) Jumble	Blue	PWBM053.BLUEX	⅜ yard (0.34m)
(F) Paperweight	Pastel	GP20.PASTL	⅝ yard (0.57m)



(A)



(B)



(C)



(F)

Additional Requirements

- Kaffe Fassett Collective 100% cotton Aurifil thread 50wt.

Cutting

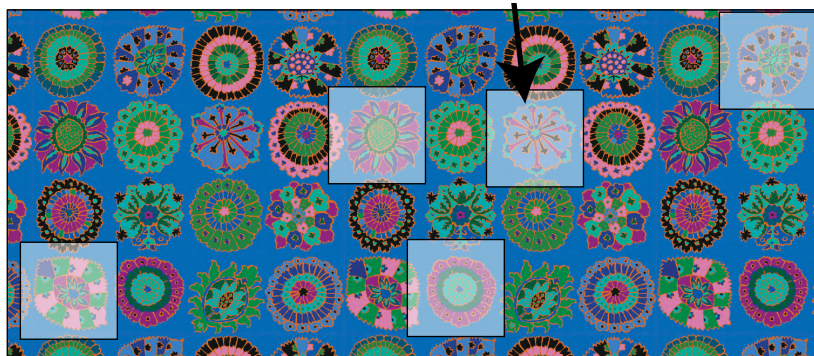
WOF = Width of Fabric

HST = Half-square Triangle

From Fabric A, fussy cut:

- (5) 5" squares with desired floral motifs centered (cut as shown to or choose your favorites)

Fabric A cutting diagram - Fussy cut (5) 5" x 5" squares



Note: Fabric for this kit is cut from running yardage, the start and end points of the design repeat may differ from the diagram above. Select the suggestions or your favorites from this cut of fabric.

From Fabrics B and F, cut from each:

- (4) 3¾" x WOF

From Fabric C, cut:

- (2) 4⅛"* x WOF; subcut

(10) 4⅛"* squares, then cut in half diagonally once to yield 20 HSTs

**If desired, size up strips and squares by ⅛", then trim completed units to size listed.*

All possible care has been taken to assure the accuracy of this pattern. We are not responsible for printing errors or the manner in which individual work varies. Please read the instructions carefully before starting this project.



Cathedral Tiles Mystery Quilt - Delft

PUZZLE 2

In this puzzle you will be creating with more beautiful Kaffe Fassett fabrics. The mystery continues as you cut, sew and construct. Be sure to keep your units labeled and neatly organized.

Instructions

Notes:

- Use a 1/4" seam allowance throughout. Sew all pieces with right sides together and raw edges even using matching thread. Press after each seam.
- Unit numbers will remain the same from puzzle to puzzle, so be sure to label units as you complete them and keep them grouped together by number to stay organized for the next puzzle.

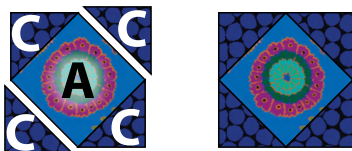
1. Sew 2 **Fabric C** 4 1/8" HSTs to opposite sides of a **Fabric A** 5" square. If desired, trim dog ears even with raw edges of center square. **Fig. 4**

Fig. 4



2. Add 2 **Fabric C** 4 1/8" HSTs to remaining sides of the unit from step 1. Make a total of 5 of **Unit 4** (6 7/8" square unfinished). If needed, sliver trim to size. **Fig. 5**

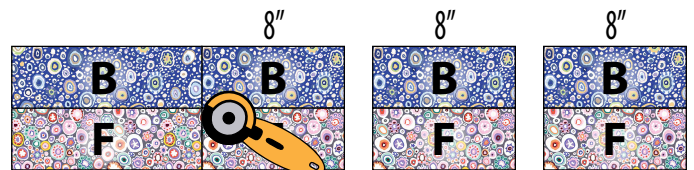
Fig. 5



Unit 4 - Make 5

3. Stitch 1 each **Fabrics B** and **F** 3 3/4" x WOF strips together lengthwise. Press seam allowance towards darker fabric. Make sure the strip set measures 7" high, including seam allowance. Make a total of 4 strip sets. From the strip sets, cut a total of 20 segments 8" wide. Label these **Unit 5**. **Fig. 6**

Fig. 6



Make 4 Strip Sets

Cut 20 - Unit 5

All possible care has been taken to assure the accuracy of this pattern. We are not responsible for printing errors or the manner in which individual work varies. Please read the instructions carefully before starting this project.