



Featuring Cottage Garden by Snow Leopard

Queen of Hearts Quilt

Finished Size: $78\frac{1}{2}$ " x $78\frac{1}{2}$ " (1.99m x 1.99m)

Project designed by Antonie Alexander - The Red Boot Quilt Co.

Purchase pattern at theredbootquiltcompany.com

Technique: Pieced | Skill Level: Advanced Beginner



Queen of Hearts Quilt

Fabric Requirements

DESIGN	COLOR	ITEM ID	YARDAGE
(A) Geranium Garden	Blue	PWSL131.BLUE	$\frac{3}{8}$ yard (0.34m)
(B) Leaf and Berry	Pink	PWSL132.PINK	$\frac{1}{2}$ yard (0.46m)
(C) Grape Vine	Purple	PWSL133.PURPLE	$\frac{3}{8}$ yard (0.34m)
(D) Daisy Extravaganza	Multi	PWSL134.MULTI	$\frac{1}{2}$ yard (0.46m)
(E) Dancing Butterflies	Green	PWSL135.GREEN	$\frac{3}{4}$ yard (0.69m)
(F) SweetPea & Butterflies	Multi	PWSL136.MULTI	$\frac{3}{8}$ yard (0.46m)
(G) Rose & Primulas	Aqua	PWSL137.AQUA	$\frac{3}{8}$ yard (0.34m)
(H) Hollyhock Delight	Blue	PWSL138.BLUE	$\frac{3}{8}$ yard (0.34m)
(I) Delphinium & Foxglove	Multi	PWSL139.MULTI	$\frac{3}{8}$ yard (0.34m)
(J) Trailing Vines	Black	PWSL140.BLACK*	1 yard (0.91m)
(K) Ladybirds	Blue	PWSL141.BLUE	$\frac{3}{8}$ yard (0.34m)
(L) Chrysanthemum Carpet	Blue	PWSL142.BLUE	$\frac{1}{2}$ yard (0.46m)
(M) Shot cotton	Pistachio	SCGP111.PISTACHIO	$\frac{1}{4}$ yard (0.23m)
(N) Shot cotton	Sunflower	SCGP112.SUNFLOWER	$\frac{1}{2}$ yard (0.46m)
(O) Shot cotton	Glacier	SCGP124.GLACIER	$\frac{3}{8}$ yard (0.34m)
(P) Shot cotton	Heliotrope	SCGP106.HELIOTROPE	$\frac{1}{4}$ yard (0.23m)
(Q) Shot cotton	Camellia	SCGP109.CAMELIA	$\frac{3}{8}$ yard (0.34m)
(R) Shot cotton	Dawn	SCGP121.DAWN	$\frac{1}{2}$ yard (0.46m)
(S) Shot cotton	Lupin	SCGP113.LUPIN	$1\frac{3}{4}$ yard (1.60m)
(T) Designer Essential Solid	Mist	CSFSESS.MISTX	$\frac{5}{8}$ yard (0.57m)

* includes binding

Backing (Purchased Separately)

44" (1.12m) wide

Rose and Primulas	Aqua	PWSL137.AQUA	4 $\frac{3}{4}$ yards (4.34m)
-------------------	------	--------------	-------------------------------

OR

108" (2.74m) wide

Millefiore	Pastel	QBG006.PASTEL	2 $\frac{3}{8}$ yards (2.17m)
------------	--------	---------------	-------------------------------

Fabric Swatches on next page...

*If kitting, refer to the final pattern for yardage amounts,
it is recommended that a sample is made to confirm accuracy.*

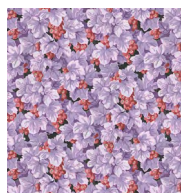
Fabric Swatches



(A)



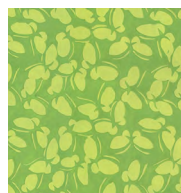
(B)



(C)



(D)



(E)



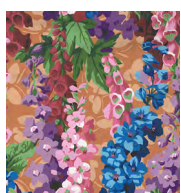
(F)



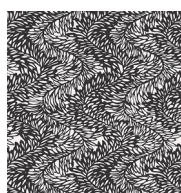
(G)



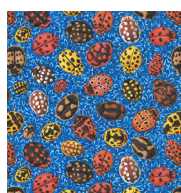
(H)



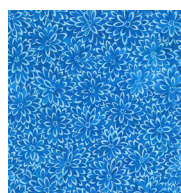
(I)



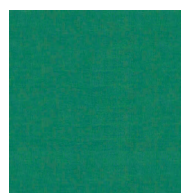
(J)



(K)



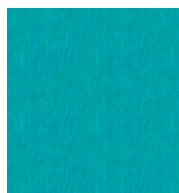
(L)



(M)



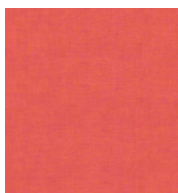
(N)



(O)



(P)



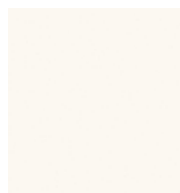
(Q)



(R)



(S)



(T)



**Backing
44"**



**Backing
108"**