



Free Spirit

Red Standout Star Quilt

Featuring Red Palette by Tim Holtz

Bold and beautiful, this large star quilt utilizes Fat Quarters with a scrappy border and binding.

Collection:	Red Palette by Tim Holtz
Technique:	Pieced
Skill Level:	Advanced Beginner
Finished Sizes:	Finished Size: 71" x 71" (1.80m x 1.80m)
	Finished Block Size: 16½" x 16½" (41.91cm x 41.91cm)

All possible care has been taken to ensure the accuracy of this pattern. We are not responsible for printing errors or the manner in which individual work varies. Please read the instructions carefully before starting this project. If kitting, it is recommended a sample is made to confirm accuracy.

Project designed by Lucy A. Fazely | Tech edited by Alison M. Schmidt

Fabric Requirements

DESIGN	COLOR	ITEM ID	YARDAGE
(A) Red 10 Piece FQ Bundle	Red	FB6FQTH.RED	1 Bundle
(B) Symphony	Neutral	PWTH022.NEUTR	3 yards (2.74m)
(C) Melange	Neutral	PWTH001.NEUTR	FQ (45.72cm x 53.34cm)
(D) Worn Croc	Murky	PWTH020.MURKY	FQ (45.72cm x 53.34cm)
(E) London Gridlock	Neutral	PWTH127.NEUTRAL	FQ (45.72cm x 53.34cm)
(F) Cracked Shadow	Jasper	PWTH128.JASPER	FQ (45.72cm x 53.34cm)
(G) Du Theater	Neutral	PWTH139.NEUTRAL	FQ (45.72cm x 53.34cm)
(H) Woodgrain	Red	PWTH168.RED	FQ (45.72cm x 53.34cm)

* includes binding

Backing (Purchased Separately)

44" (1.12m) wide

Red Collage Red PWTH220.RED 4½ yards (4.11m)

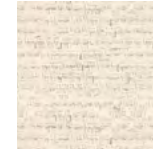
OR

108" (2.74m) wide

2⅓ yards (2.13m)



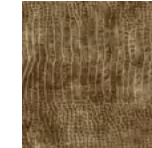
(A)



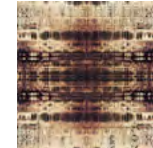
(B)



(C)



(D)



(E)



(F)



(G)



(H)



Backing

44"

Additional Recommendations

- 100% cotton thread in colors to match
- 79" x 79" (2.01m x 2.01m) quilt batting

Cutting

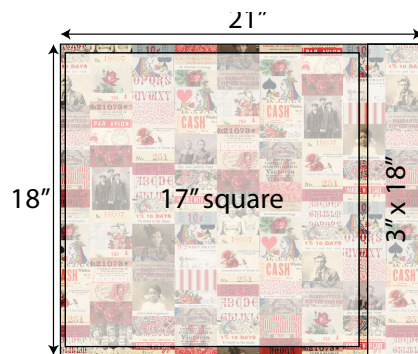
WOF = Width of Fabric

Fabric A (Fat Quarter bundle) and Fabrics C-H:

From each of (16) fat quarters, cut

- (1) 17" square
- (1) 3" x 18" strip

Fig. 1



Fabric B, cut:

- (6) 17" x WOF; subcut
- (12) 17" squares

Instructions

Use a 1/4" seam allowance throughout. Sew all pieces with right sides together and raw edges even using matching thread. Press after each seam.

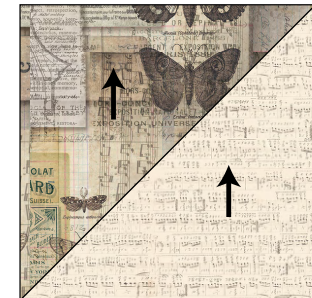
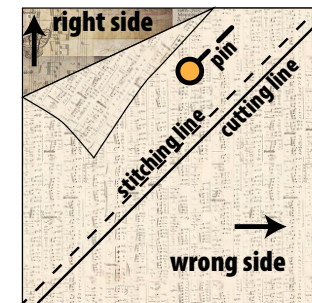
Half-Square Triangle Block Construction

There are (2) versions of the Half-Square Triangle (HST) block: (1) with a left-leaning seam and (1) with a right-leaning seam. Since most of the fabrics are directional, it is important to arrange the 17" squares correctly when cutting and sewing so they are all correctly facing once stitched.

Right-Leaning Blocks

1. For right-leaning-seam blocks, arrange (2) 17" squares right sides together as shown, aligning all edges. The bottom square will have the fabric aligned with top of print aligned to top edge of square. The top square will have the fabric aligned with top of print aligned to right edge of square.
2. Draw a line on the top square from the bottom left corner to upper right corner. Pin squares together *above* the stitching line. Stitch along the line. Trim 1/4" from stitching line **on side without the pin**. Reserve the leftover pink triangles. Press open to complete finished block. **Fig. 2**

Fig. 2

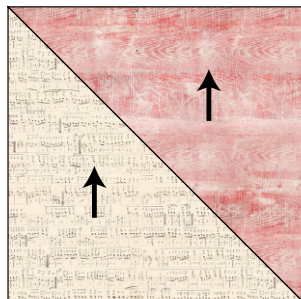
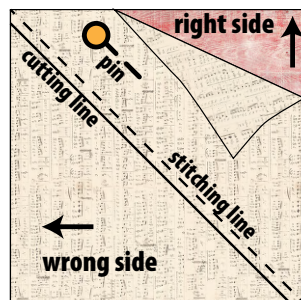


3. Referring to **Quilt Layout** diagram (page 5), make a total of (6) right-leaning blocks with fabrics indicated.

Left-Leaning Blocks

- For left leaning seam blocks, arrange (2) 17" squares right sides together as shown, aligning all edges. The bottom square will have the fabric aligned with top of print aligned to top edge of square. The top square will have the fabric aligned with top of print aligned to left edge of square.
- Draw a line on the top square from the bottom right corner to upper left corner. Pin squares together above the stitching line. Stitch along the line. Trim $\frac{1}{4}$ " from stitching line **on side without the pin**. Reserve the leftover pink triangles. Press open to complete finished block. **Fig. 3**

Fig. 3



- Referring to **Quilt Layout** diagram (page 5), make a total of (6) left-leaning blocks with fabrics indicated.

Quilt Top Assembly

- From each of the trimmed-off triangles of **Fabrics A** and **C-H**, cut the following pieces as shown:

- (1) $2\frac{1}{2}$ " x $13\frac{1}{2}$ "
- (1) 3" x $10\frac{1}{2}$ "
- (1) $2\frac{1}{2}$ " x 8"
- (1) $2\frac{1}{2}$ " x $5\frac{1}{2}$ "



- Noting **Quilt Layout** diagram (page 6), arrange the blocks and (4) **Fabric B** 17" squares in (4) rows. Sew into rows. Sew rows together. Quilt center measures $66\frac{1}{2}$ " square (unfinished).
- Randomly stitch all 3" x 18" and 3" x $10\frac{1}{2}$ " strips together with $\frac{1}{4}$ " seams making (1) long strip. Cut into (2) 3" x $71\frac{1}{2}$ " and (2) 3" x $66\frac{1}{2}$ " borders. Trim remaining strip to $2\frac{1}{2}$ " wide and reserve for binding.
- Stitch 3" x $66\frac{1}{2}$ " borders to the right and left sides of the quilt center. Add 3" x $71\frac{1}{2}$ " borders to the top and bottom to complete the quilt top.

Finishing

- Sew together all the all $2\frac{1}{2}$ " pieces cut in step 7 and the trimmed-down leftover border strip. Press seams open. Press the binding strip in half wrong sides together.
- Layer backing (wrong side up), batting, and quilt top (right side up). Baste the layers together and quilt as desired. Trim excess batting and backing even with the top after quilting is completed.
- Leaving an 8" tail of binding, sew the binding to the top of the quilt through all layers matching all raw edges. Miter corners. Stop approximately 12" from where you started. Lay both loose ends of binding flat along quilt edge. Where the loose ends meet, fold them back on themselves and press to form a crease. Using this crease as your stitching line, sew the two open ends of the binding right sides together. Trim seam to $\frac{1}{4}$ " and press open. Finish sewing binding to quilt.
- Turn the binding to the back of quilt and hand-stitch in place.

Quilt Layout

