

Featuring Brave by Anna Maria Horner

Ridgewalk Quilt - Dark

Finished Size: 64" x 70" (1.63m x 1.78m)

Project designed by Lisa Alley - Bear Hug Quiltworks

Purchase pattern at bearhugquiltworks.com

Technique: Pieced | Skill Level: Advanced Beginner



Ridgewalk Quilt - Dark

Fabric Requirements

DESIGN	COLOR	ITEM ID	YARDAGE
(A) Surprise	Surreal	PWAH193.SURREAL	1 yard (0.91m)
(B) Labyrinth	Ruby	PWAH194.RUBY*	1½ yards (1.49m)
(C) Sunseekers	Day	PWAH195.DAY	1 yard (0.91m)
(D) Sunseekers	Night	PWAH195.NIGHT	1 yard (0.91m)
(E) Giggle	Indigo	PWAH197.INDIGO	1 yard (0.91m)
(F) Petaloutha	Lilac	PWAH199.LILAC	1 yard (0.91m)
(G) Cathedral	Golden	PWAH202.GOLDEN	⅝ yard (0.57m)

* includes binding

Backing (Purchased Separately)

44" (1.12m) wide			4 yards (3.66m)
OR			
108" (2.74m) wide			
Surprise	Navy	QBAH008.NAVY	2 yards (1.83m)



(A)



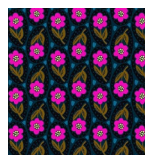
(B)



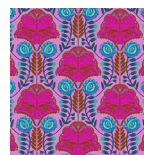
(C)



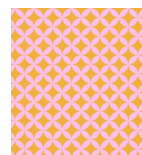
(D)



(E)



(F)



(G)



Backing
108"

*If kitting, refer to the final pattern for yardage amounts,
it is recommended that a sample is made to confirm accuracy.*