



Featuring Palette Neutral by Tim Holtz

## Scrap Petal Garden Quilt - Palette Neutral

Finished Size: 68" x 68" (1.73m x 1.73m)

Project designed by Penni Domikis - Cabin Quilters

Purchase pattern at [cabinquilters.com](http://cabinquilters.com)

Technique: Pieced and Applique | Skill Level: Advanced Beginner



# Scrap Petal Garden Quilt Palette Neutral

## Fabric Requirements

DESIGN	COLOR	ITEM ID	YARDAGE
<b>(A) Neutral Collage</b>	Neutral	PWTH250.NEUTRAL	FQ (45.72cm x 53.34cm)
<b>(B) Neutral Map</b>	Neutral	PWTH253.NEUTRAL	FQ (45.72cm x 53.34cm)
<b>(C) Neutral Gears</b>	Neutral	PWTH255.NEUTRAL	FQ (45.72cm x 53.34cm)
<b>(D) Neutral Wood</b>	Neutral	PWTH256.NEUTRAL	FQ (45.72cm x 53.34cm)
<b>(E) Neutral Wallpaper</b>	Neutral	PWTH257.NEUTRAL	½ yards (0.46m)
<b>(F) Neutral Tiny Print</b>	Neutral	PWTH258.NEUTRAL*	1 yards (0.91m)
<b>(G) Neutral Marble</b>	Neutral	PWTH259.NEUTRAL	FQ (45.72cm x 53.34cm)

## Re-Orderable Fabrics

<b>(H) Worn Croc</b>	Hickory	PWTH020.HICKORY	FQ (45.72cm x 53.34cm)
<b>(I) Top Shop</b>	Multi	PWTH024.MULTI	FQ (45.72cm x 53.34cm)
<b>(J) Numbers</b>	Black	PWTH063.BLACK	FQ (45.72cm x 53.34cm)
<b>(K) Du Theater</b>	Neutral	PWTH139.NEUTRAL	FQ (45.72cm x 53.34cm)
<b>(L) Butterflies</b>	Parchment	PWTH004.PARCHMENT	½ yard (0.46m)
<b>(M) Dictionary</b>	Neutral	PWTH008.NEUTR	½ yard (0.46m)
<b>(N) Cobwebs</b>	Neutral	PWTH150.NEUTRAL	½ yard (0.46m)
<b>(O) Typography</b>	Parchment	PWTH175.PARCHMENT	½ yard (0.46m)
<b>(P) Sewing Instructions</b>	Linen	PWTH110.LINEN	½ yard (0.46m)
<b>(Q) Multiplication Tables</b>	Parchment	PWTH106.PARCHMENT	½ yard (0.46m)
<b>(R) Cracked Shadow</b>	Obsidian	PWTH128.OBSIDIAN	FQ (45.72cm x 53.34cm)

\* includes binding

## Backing (Purchased Separately)

### 44" (1.12m) wide

Tickets Neutral PWTH252.NEUTRAL 4½ yards (4.11m)

OR

### 108" (2.74m) wide

Dictionary Neutral QBTH006.NEUTRAL 2¼ yards (2.06m)

*Fabric Swatches on next page...*



## Fabric Swatches



(A)



(B)



(C)



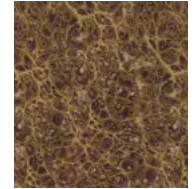
(D)



(E)



(F)



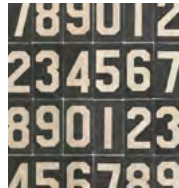
(G)



(H)



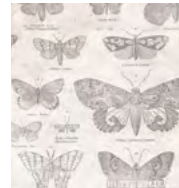
(I)



(J)



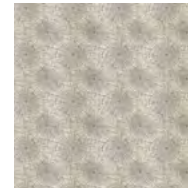
(K)



(L)



(M)



(N)



(O)



(P)



(Q)



(R)



**Backing  
44"**



**Backing  
108"**