



Featuring On Your Mark by Seth Apter

# Scotland Yard Quilt

Finished Size: 60" x 72" (1.52m x 1.83m)

Project designed by Marcea Owen - Cotton Street Commons

Purchase pattern at [cottonstreetcommons.com](http://cottonstreetcommons.com)

Technique: Pieced | Skill Level: Advanced Beginner



# Scotland Yard Quilt

## Fabric Requirements

DESIGN	COLOR	ITEM ID	YARDAGE
(A) Landmark	Desert	PWSE031.DESERT	⅓ yard (0.30m)
(B) Finish Line	Sage	PWSE032.SAGE	⅓ yard (0.30m)
(C) Tracks	Blush	PWSE034.BLUSH	⅓ yard (0.30m)
(D) Wander	Jade	PWSE035.JADE	⅓ yard (0.30m)
(E) LG Chain Letter	Seafoam	PWSE037.SEAFOAM	⅓ yard (0.30m)
(F) SM Chain Letter	Paper	PWSE038.PAPER	⅓ yard (0.30m)
(G) Contours	Wine	PWSE039.WINE	⅓ yard (0.30m)
(H) Diamonds	Stained Glass	PWSE040.STAINEDGLASS	⅓ yard (0.30m)
(I) Script	Paper	PWSE042.PAPER	⅓ yard (0.30m)
(J) Maze	Indigo	PWSE043.INDIGO*	⅞ yard (0.80m)
(K) Multiplication Table	Parchment	PWTH106.PARCHMENT	1⅝ yards (1.49m)

\* includes binding

## Backing (Purchased Separately)

44" (1.12m) wide

Page by Page Desert PWSE028.DESERT 4½ yards (4.11m)



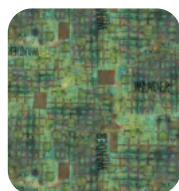
(A)



(B)



(C)



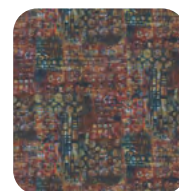
(D)



(E)



(F)



(G)



(H)



(I)



(J)



(K)



Backing  
44"

*If kitting, refer to the final pattern for yardage amounts,  
it is recommended that a sample is made to confirm accuracy.*