

Featuring Wonderland by Tim Holtz

Simple Christmas Quilt

Finished Size: 60" x 72" (1.52m x 1.83m)

Project designed by Charisma Horton - Charisma's Corner

Purchase pattern at charismascorner.com

Technique: Pieced | Skill Level: Advanced Beginner

Fabric Requirements

DESIGN	COLOR	ITEM ID	YARDAGE
(A) Foulard	Multi	FNTH004.MULTI	1¼ yards (1.14m)
(B) Winter Plaid	Multi	FNTH005.MULTI	1¼ yards (1.14m)
(C) Tidings Type	Red	FNTH006.RED*	1½ yards (1.37m)
(D) Tidings Type	White	FNTH006.WHITE	½ yard (0.46m)
(E) Flannel Solid	Snow	FNTP007.SNOW	3 yards (2.74m)

* includes binding

Backing (Purchased Separately)

44" (1.12m) wide

English Holly

OR

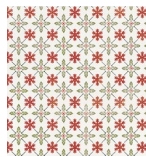
108" (2.74m) wide

Green

FNTH007.GREEN

4 yards (3.66m)

2 yards (1.83m)



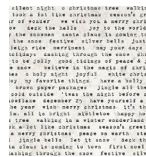
(A)



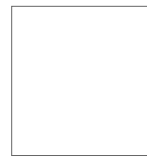
(B)



(C)



(D)



(E)



Backing
44"

If kitting, refer to the final pattern for yardage amounts, it is recommended that a sample is made to confirm accuracy.