



*Free Spirit*

## Simple Elegance Quilt

Featuring Emery Walker by The Original  
Morris & Co.

Elegance is within reach with this beautiful quilt  
with strong vertical lines.

<b>Collection:</b>	Emery Walker by The Original Morris & Co.
<b>Technique:</b>	Pieced
<b>Skill Level:</b>	Advanced Beginner
<b>Finished Size:</b>	<b>Finished Size:</b> 74" x 84" (1.88m x 2.13m) <b>Finished Block Size:</b> 17" x 17" (43.18cm x 43.18cm)

*All possible care has been taken to ensure the accuracy of this pattern. We are not responsible for printing errors or the manner in which individual work varies. Please read the instructions carefully before starting this project. If kitting, it is recommended a sample is made to confirm accuracy.*



Project designed by Lucy A. Fazely | Tech edited by Alison M. Schmidt

## Fabric Requirements

DESIGN	COLOR	ITEM ID	YARDAGE
<b>(A) Mini Pink &amp; Rose</b>	Sunflower	PWWM076.SUNFLOWER	¼ yard (0.23m)
<b>(B) Bird</b>	Boughs Green	PWWM097.BOUGHSGREEN	¼ yard (0.23m)
<b>(C) Bluebell</b>	Leaf Green	PWWM098.LEAFGREEN	⅓ yard (0.30m)
<b>(D) Bower</b>	Indigo	PWWM099.INDIGO	¼ yard (0.23m)
<b>(E) Daisy</b>	Multi	PWWM100.MULTI	1 yard (0.91m)
<b>(F) Dorothy's Kilim</b>	Sunflower	PWWM101.SUNFLOWER*	3⅝ yards (3.31m)
<b>(G) May's Coverlet</b>	Twining Vine	PWWM102.TWININGVINE	2⅓ yards (2.13m)
<b>(H) Pinstripe</b>	Twining Vine	PWWM103.TWININGVINE	2⅓ yards (2.13m)
<b>(I) Small Rose</b>	Weld	PWWM104.WELD	¼ yard (0.23m)
<b>(J) Rose</b>	Rose	PWWM105.ROSE	¼ yard (0.23m)
<b>(K) Sunflower</b>	Berry	PWWM106.BERRY	⅓ yard (0.30m)
<b>(L) Wallflower</b>	Chrysanthemum	PWWM107.CHRYSANTHEMUM	¼ yard (0.23m)
<b>(M) Small Wallflower</b>	Blue	PWWM108.BLUE	¼ yard (0.23m)
<b>(N) Emery's Willow</b>	Woad Blue	PWWM109.WOADBLUE	¼ yard (0.23m)
<b>(O) Michaelmas Daisy</b>	Ink	PWWM035.INK	1⅞ yards (1.03m)

\* includes binding

## Backing (Purchased Separately)

**44" (1.12m) wide**

Daisy Multi PWWM100.MULTI 5¼ yards (4.80m)

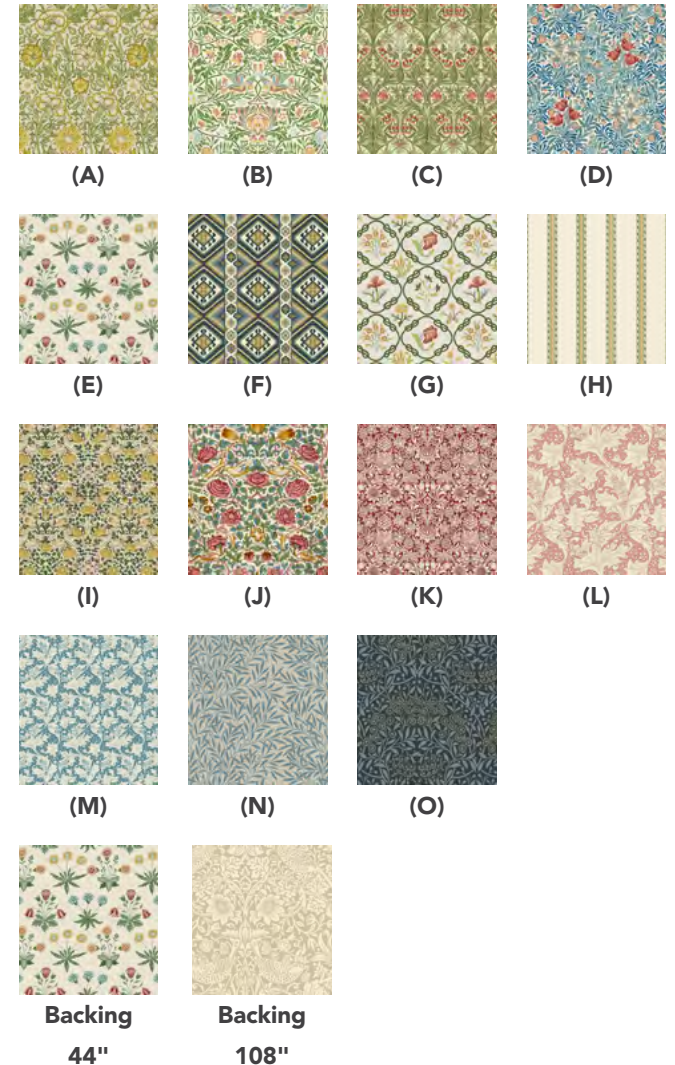
**OR**

**108" (2.74m) wide**

Strawberry Thief Linen QBWM001.LINEN 2½ yards (2.29m)

## Additional Recommendations

- 100% cotton thread in colors to match
- 82" x 92" (2.08m x 2.34m) batting



## Cutting

**WOF = Width of Fabric**, cut from selvage to selvage

**LOF = Length of Fabric**, cut parallel to selvage

**Fabrics A, B, D, I, J, L, M, and N, cut from each:**

- (1) 4" x WOF; subcut
  - (4) 4" squares
  - (2) 3½" squares

**Fabrics C and K, cut from each:**

- (1) 4" x WOF; subcut
  - (8) 4" squares
- (1) 3½" x WOF; subcut
  - (4) 3½" squares

**Fabric E, cut:**

- (3) 9¼" x WOF; subcut
  - (12) 9¼" squares

**Fabric F, cut per the cutting diagram:**

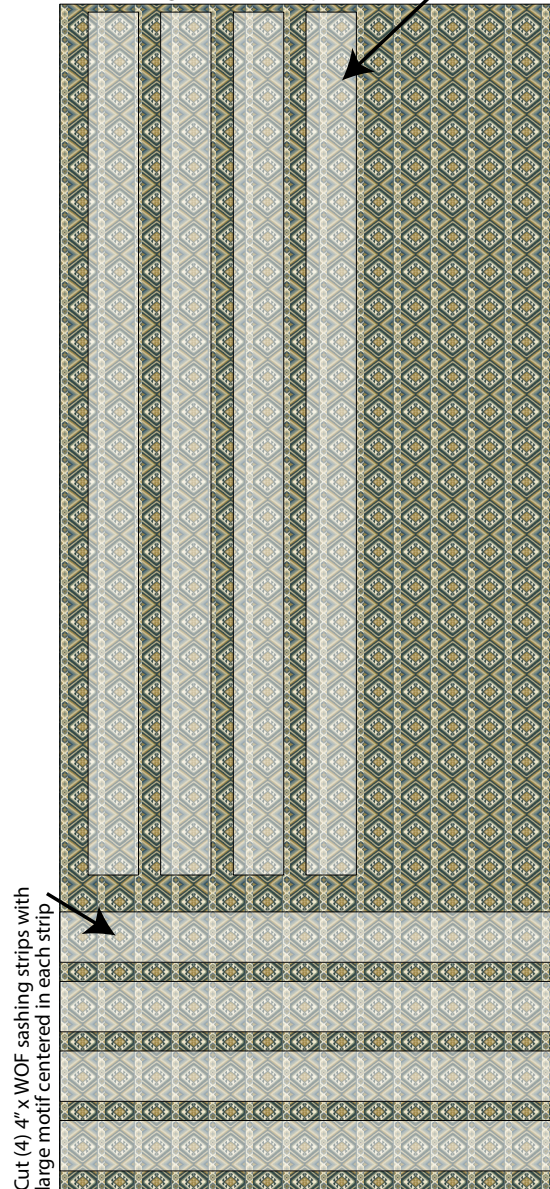
Fussy cut (4) 4" x 68½" sashing strips, parallel to the selvage (i.e., along LOF)

Fussy cut (4) 4" x WOF sashing strips

(9) 2½" x WOF binding strips

### Fabric F cutting diagram

Fabric F - Cut (4) 4" x 68 1/2" sashing strips parallel to selvage with wide stripe centered



Cut (4) 4" x WOF sashing strips with large motif centered in each strip

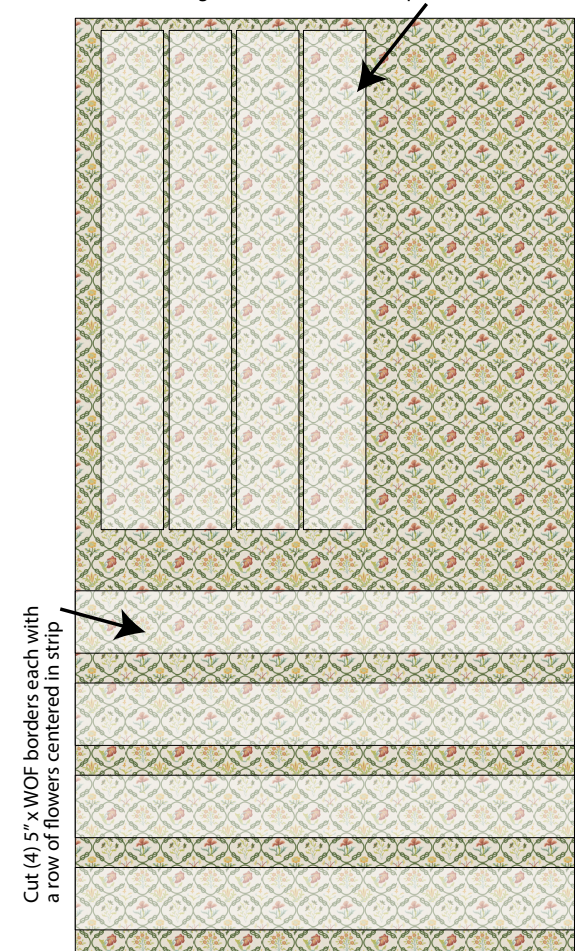
### Fabric G, cut per the cutting diagram:

Fussy cut (4) 5" x 40" side borders, parallel to the selvage (i.e., along LOF)

Fussy cut (4) 5" x WOF top/bottom borders

### Fabric G cutting diagram

Fabric G - Cut (4) 5" x 40" borders, parallel to selvage, each with a floral stripe centered



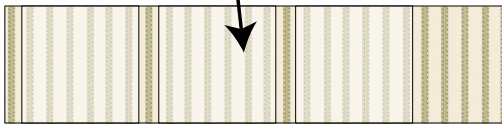
Cut (4) 5" x WOF borders each with a row of flowers centered in strip

## Fabric H, cut per the cutting diagram:

- (8) 9<sup>3</sup>/<sub>8</sub>" x WOF; fussy cut
- (24) 9<sup>3</sup>/<sub>8</sub>" squares

### Fabric H cutting diagram

Fabric H - From each 9 3/8" x WOF strip, cut (3) 9 3/8" squares each centered over vertical stripe for a total of (24) 9 3/8" squares.



## Fabric O, cut:

- (5) 4" x WOF; subcut
- (48) 4" squares
- (3) 3<sup>1</sup>/<sub>2</sub>" x WOF; subcut
- (24) 3<sup>1</sup>/<sub>2</sub>" squares

## Instructions

**Note:** Use a 1/4" seam allowance throughout. Sew all pieces with right sides together and raw edges even using matching thread. Press as directed after each seam.

## Block Construction

1. Draw a diagonal line across the wrong side of all the **Fabric O** 4" squares. Draw 2 lines, 1/4" on either side of the first. **Fig. 1**

Fig. 1



2. Arrange a marked **Fabric O** 4" square right sides together with a **Fabric K** 4" square, aligning all edges. Stitch along the 2 outside lines. Cut apart on the center line. Press the 2 triangle sets open to yield 2 HST (half-square triangle) units. Centering seam, trim each to 3<sup>1</sup>/<sub>2</sub>" square. Make a total of 16 Unit 1a. **Fig. 2**

Fig. 2



3. In the same manner, make 16 Unit 1b and 8 each Units 1c-1j with fabrics indicated. **Fig. 3**

Fig. 3



4. Sew 2 Unit 1a together, noting fabric placement. Make a total of 4 each Units 2a and 3a, noting opposite orientation of the triangles (3<sup>1</sup>/<sub>2</sub>" x 6<sup>1</sup>/<sub>2</sub>" unfinished). **Fig. 4**

Fig. 4



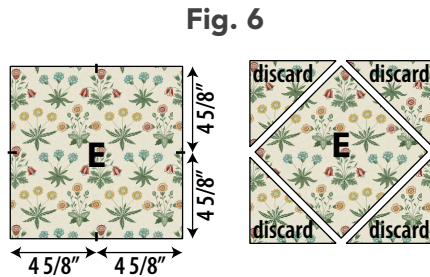
5. In the same manner, make 4 each Units 2b and 3b and 2 each Units 2c-2j and 3c-3j. **Fig. 5**

Fig. 5





6. Measure  $4\frac{5}{8}$ " from each corner of a **Fabric E**  $9\frac{1}{4}$ " square and mark center of each edge. Cut from mark to mark, cutting off all four corners creating a  $6\frac{1}{2}$ " square. Repeat with remaining **Fabric E** squares. **Fig. 6**



7. Arrange a **Fabric E**  $6\frac{1}{2}$ " square, 2 each **Fabric K** and **Fabric O**  $3\frac{1}{2}$ " squares, and 2 each Unit 2a and Unit 3a in 3 rows as shown. Stitch into rows. Sew rows together. Make a total of 2 Unit 4a ( $12\frac{1}{2}$ " square unfinished). **Fig. 7**



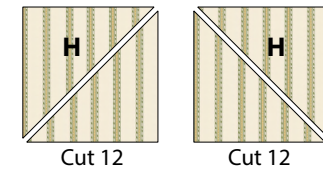
8. In the same manner, make 2 Unit 4b and 1 each Units 4c-4j with fabrics and units indicated. **Fig. 8**

Fig. 8



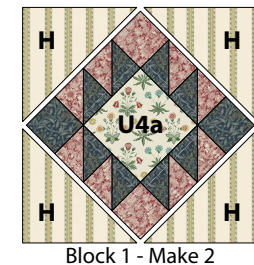
9. Cut 12 **Fabric H**  $9\frac{3}{8}$ " squares in half diagonally. Cut the remaining 12 **Fabric H**  $9\frac{3}{8}$ " squares in half diagonally in the opposite direction. **Fig. 9**

Fig. 9



10. Sew 4 **Fabric H** triangles to sides of a Unit 4a as shown. Make a total of 2 Block 1 ( $17\frac{1}{2}$ " square unfinished). **Fig. 10**

Fig. 10



11. In the same manner, make 2 Block 2 and 1 each Blocks 3-10 with fabrics and units indicated. **Fig. 11**

**Fig. 11**



Block 2 - Make 2



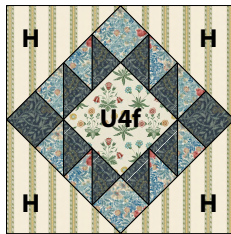
Block 3 - Make 1



Block 4 - Make 1



Block 5 - Make 1



Block 6 - Make 1



Block 7 - Make 1



Block 8 - Make 1



Block 9 - Make 1



Block 10 - Make 1

## Quilt Top Assembly

**Note:** Follow the **Quilt Layout** diagram (page 7) while assembling the quilt. Press seam allowances as directed or towards the Sashing Strips. Measure the Quilt Center width and height before cutting and adding borders and adjust border measurements if necessary to match your measurements.

- Arrange the blocks in 3 columns as shown and sew into columns (17½" x 68½" unfinished). Press seams open.
- Arrange block columns alternating with **Fabric F** 4" x 68½" sashing strips (cut along the LOF). Pin, matching ends and center, then sew block rows and vertical sashing strips together.
- Trim the end of 1 or 2 **Fabric F** 4" x WOF sashing strips so that you can sew together with a ¼" seam allowance while pattern matching the design. Press open. Center a small stripe, near the center of the sashing strip, over the top of the middle block row, and trim each end of the strip to fit the width of the quilt center. Pin, matching ends and center, then sew together. Repeat to add the bottom **Fabric F** 4" x WOF sashing strip to complete the quilt center (65½" x 76½" unfinished).
- Trim the end of 1 or 2 **Fabric G** 5" x 40" border strips (cut along the LOF) so that you can sew together with a ¼" seam allowance while pattern matching the design. Press open. Repeat to make a second border strip, as then as in step 14, trim both to fit the length of the quilt center and sew to the left and right sides.
- Repeat step 15 using the **Fabric G** 5" x WOF border strips to add the top and bottom borders to complete the quilt top. Quilt top measures 74½" x 85½" (unfinished).



## Finishing

17. Sew together the 2½" **Fabric F** binding strips end-to-end using diagonal seams. Press seams open. Press the binding strip in half wrong sides together.
18. Layer backing (wrong side up), batting, and quilt top (right side up). Baste the layers together and quilt as desired. Trim excess batting and backing even with the top after quilting is completed.
19. Leaving an 8" tail of binding, sew the binding to the top of the quilt through all layers matching all raw edges. Miter corners. Stop approximately 12" from where you started. Lay both loose ends of binding flat along quilt edge. Where the loose ends meet, fold them back on themselves and press to form a crease. Using this crease as your stitching line, sew the two open ends of the binding right sides together. Trim seam to ¼" and press open. Finish sewing binding to quilt.
20. Turn the binding to the back of quilt and hand-stitch in place.

Quilt Layout

