

*Free Spirit* 



Featuring Everglow and True Colors by Tula Pink

## Snuggle Time Quilt (Green)

Finished Size: 42" (1.07m) Square

*Project designed by Lilabelle Lane Creations*

*Purchase pattern at [lilabellelanecreations.com](http://lilabellelanecreations.com)*

**Technique:** Pieced | **Skill Level:** Advanced Beginner

[freespiritfabrics.com](http://freespiritfabrics.com)



# Snuggle Time Quilt (Green)

## Fabric Requirements

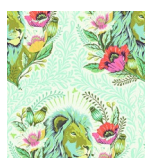
DESIGN	COLOR	ITEM ID	YARDAGE
(A) Good Hair Day	Karma	PWTP201.KARMA	½ yard (0.46m)
(B) All Ears	Aura	PWTP202.AURA	½ yard (0.46m)
(C) Neck For Days	Mystic	PWTP203.MYSTIC	½ yard (0.46m)
(D) My Hippos Don't Lie	Spirit	PWTP204.SPIRIT	1 yard (0.91m)
(E) Neon Tent Stripe	Mystic	PWTP069 .MYSTIC	¼ yard (0.23m)
(F) Neon Tent Stripe	Karma	PWTP069.KARMA	¼ yard (0.23m)
(G) Neon Tent Stripe	Spirit	PWTP069.SPIRIT*	¾ yard (0.69m)
(H) Neon Tent Stripe	Aura	PWTP069.AURA	¼ yard (0.23m)
(I) Neon Pom Pom	Mystic	PWTP118.MYSTIC	¼ yard (0.23m)
(J) Neon Pom Pom	Karma	PWTP118.KARMA	¼ yard (0.23m)
(K) Neon Pom Pom	Aura	PWTP118.AURA	¼ yard (0.23m)
(L) Neon Fairy Flakes	Mystic	PWTP157.MYSTIC	½ yard (0.46m)
(M) Neon Fairy Flakes	Karma	PWTP157.KARMA	⅓ yard (0.30m)
(N) Neon Fairy Flakes	Aura	PWTP157.AURA	½ yard (0.46m)

\* includes binding

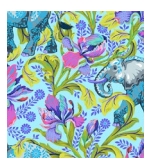
## Backing (Purchased Separately)

**44" (1.12m) wide**

Good Hair Day	Karma	PWTP201.KARMA	3 yards (2.74m)
---------------	-------	---------------	-----------------



(A)



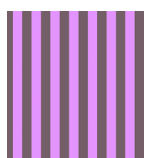
(B)



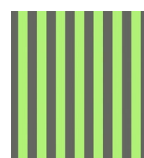
(C)



(D)



(E)



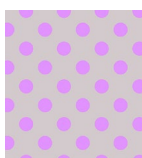
(F)



(G)



(H)



(I)



(J)



(K)



(L)



(M)



(N)



Backing  
44"

*If kitting, refer to the final pattern for yardage amounts,  
it is recommended that a sample is made to confirm accuracy.*