

Featuring Laboratory by Tim Holtz

Spider Quilt

Finished Size: 57 1/2" x 59 1/2" (1.46m x 1.51m)

Project designed by Pen and Paper Patterns; Re-Colored by FreeSpirit Fabrics

Purchase pattern at penandpaperpatterns.com

Technique: Pieced | Skill Level: Advanced Beginner

Fabric Requirements

DESIGN	COLOR	ITEM ID	YARDAGE
(A) Experiment	Green	PWTH187.GREEN	1/8 yard (0.11m)
(B) Molecular	Orange	PWTH188.ORANGE	7/8 yard (0.80m)
(C) Flourish	Orange	PWTH192.ORANGE	1/8 yard (0.11m)
(D) Striped	Black	PWTH194.BLACK*	1/2 yard (0.46m)
(E) Cobwebs	Neutral	PWTH150.NEUTRAL	3 yards (2.74m)
(F) Alchemy	Black	PWTH146.BLACK	7/8 yard (0.80m)

* includes binding

Backing (Purchased Separately)

44" (1.12m) wide

Specimen Neutral PWTH184.NEUTRAL 3 3/4 yards (3.43m)

OR

108" (2.74m) wide

Dictionary Neutral QBTH006.NEUTRAL 1 3/4 yards (1.60m)



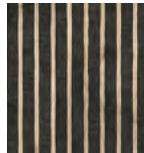
(A)



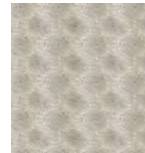
(B)



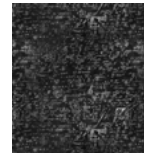
(C)



(D)



(E)



(F)



Backing
44"



Backing
108"

If kitting, refer to the final pattern for yardage amounts, it is recommended that a sample is made to confirm accuracy.