



Featuring Frightful, Abandoned, Monochrome and Foundations by Tim Holtz

Squash Blossom Quilt

Finished Size: 60" x 72" (1.52m x 1.83m)

Project designed by Charisma Horton - Charisma's Corner

Purchase pattern at charismacorner.com

Technique: Pieced | Skill Level: Advanced Beginner

Squash Blossom Quilt

Fabric Requirements

DESIGN	COLOR	ITEM ID	YARDAGE
(A) Harlequin	Black	PWTH074.8BLAC	1/3 yard (0.30m)
(B) Manor	Orange	PWTH076.8ORAN*	2 1/2 yards (2.29m)
(C) Spells	Neutral	PWTH078.8NEUT	1 5/8 yards (1.49m)
(D) Diamonds	Charcoal	PWTH030.CHARCOAL	1/2 yard (0.46m)
(E) Crossbones	Black	PWTH151.BLACK	3/8 yard (0.34m)
(F) Alchemy	Black	PWTH146.BLACK	3/4 yard (0.69m)
(G) Hocus Pocus	Neutral	PWTH153.NEUTRAL	1/3 yard (0.30m)
(H) Provisions	Sienna	PWTH115.SIENNA	2/3 yards (0.60m)
(I) Spellbound	Orange	PWTH148.ORANGE	3/8 yard (0.34m)
(J) London Gridlock	Neutral	PWTH127.NEUTRAL	1/3 yard (0.30m)
(K) Forboding	Black	PWTH152.BLACK	1/3 yard (0.30m)

* includes binding

Backing (Purchased Separately)

44" (1.12m) wide

Forboding	Black	PWTH152.BLACK	4 1/4 yards (3.89m)
-----------	-------	---------------	---------------------



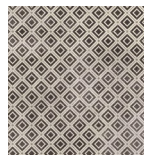
(A)



(B)



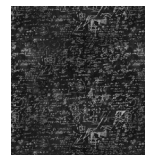
(C)



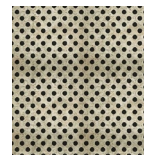
(D)



(E)



(F)



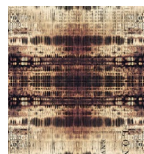
(G)



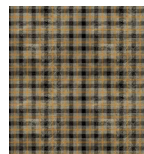
(H)



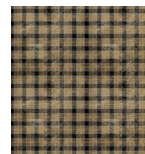
(I)



(J)



(K)



Backing
44"

If kitting, refer to the final pattern for yardage amounts, it is recommended that a sample is made to confirm accuracy.