



Featuring Classics and Stash by Kaffe Fassett Collective

Star Light Star Bright Quilt

A 12-Month Block of the Month pattern

Finished Size: 100" x 100" (2.54m x 2.54m)

Project designed by Linda McGibbon - Lakeview Quilting

Purchase pattern at lakeviewquilting2.com

Technique: Pieced | Skill Level: Advanced Beginner

freespiritfabrics.com



Star Light Star Bright Quilt

Fabric Requirements

DESIGN	COLOR	ITEM ID	YARDAGE
(A) Japanese Chrysanthemum	Purple	PWPJ041.PURPL	2¼ yards (2.06m)
(B) Japanese Chrysanthemum	Red	PJ41.REDXX	⅛ yard (0.11m)
(C) Feathers	Green	PWPJ055.GREEN	⅛ yard (0.11m)
(D) Cactus Flower	Black	PWPJ096.BLACK	¼ yard (0.23m)
(E) Cactus Flower	Blue	PWPJ096.BLUE	1⅜ yards (1.26m)
(F) Cactus Flower	Green	PWPJ096.GREEN	½ yard (0.46m)
(G) Cactus Flower	Red	PWPJ096.RED	1⅜ yards (1.03m)
(H) Millefiore	Green	GP92.GREE	2 yards (1.83m)
(I) Roman Glass	Emerald	PWGP001.EMERA	⅝ yard (0.57m)
(J) Button Mosaic	Green	PWGP182.GREEN	¼ yard (0.23m)
(K) Button Mosaic	Blue	PWGP182.BLUE	½ yard (0.46m)
(L) Reflections	Fuchsia	PWBM087.FUCHSIA	¼ yard (0.23m)
(M) Reflections	Green	PWBM087.GREEN	⅝ yard (0.57m)
(N) Reflections	Orange	PWBM087.ORANGE	¼ yard (0.23m)
(O) Aboriginal Dot	Red	GP71.REDD	⅛ yard (0.11m)
(P) Aboriginal Dot	Plum	GP71.PLUMX	¾ yard (0.69m)
(Q) Jumble	Blue	PWBM053.BLUEX	⅝ yard (0.57m)
(R) Jumble	Ruby	PWBM053.RUBY	⅛ yard (0.11m)
(S) Spot	Duck Egg	GP70.DUCKE	3½ yards (3.20m)
(T) Spot	Apple	GP70.APPLE	⅝ yard (0.57m)
(U) Spot	Eggplant	PWGP070.EGGPL	½ yard (0.46m)
(V) Shot Cotton – Wide Stripe	Heather	SSGP001.HEATHER	¾ yard (0.34m)
(W) Shot Cotton – Wide Stripe	Aloe	SSGP001.ALOE	1 yard (0.91m)
(X) Shot Cotton – Wide Stripe	Blueberry	SSGP001.BLUEBERRY	½ yard (0.46m)
(Y) Shot Cotton – Wide Stripe	Moss	SSGP001.MOSS*	⅞ yard (0.80m)

* includes binding

Backing (Purchased Separately)

44" (1.12m) wide

Cloisonne	Blue	PWGP046.BLUE	8½ yards (7.77m)
-----------	------	--------------	------------------

OR

108" (2.74m) wide

Millefiore	Blue	QBG006.BLUE	3 yards (2.74m)
------------	------	-------------	-----------------

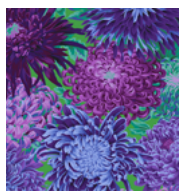
Fabric Swatches on next page...

*If kitting, refer to the final pattern for yardage amounts,
it is recommended that a sample is made to confirm accuracy.*



Star Light Star Bright Quilt

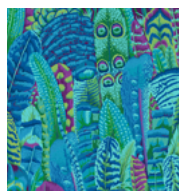
Fabric Swatches



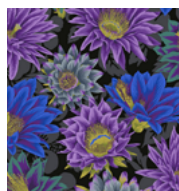
(A)



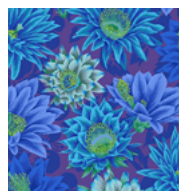
(B)



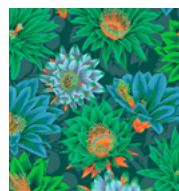
(C)



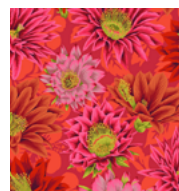
(D)



(E)



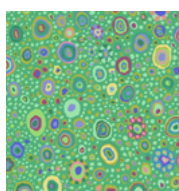
(F)



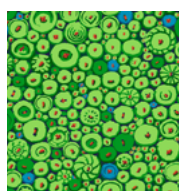
(G)



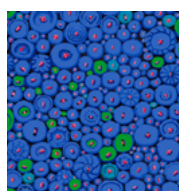
(H)



(I)



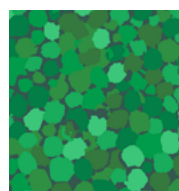
(J)



(K)



(L)



(M)



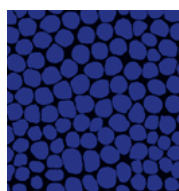
(N)



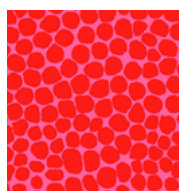
(O)



(P)



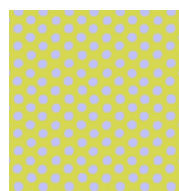
(Q)



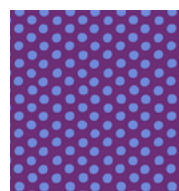
(R)



(S)



(T)



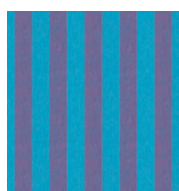
(U)



(V)



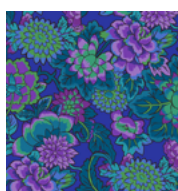
(W)



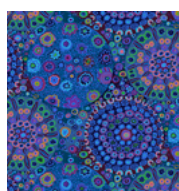
(X)



(Y)



Backing
44"



Backing
108"