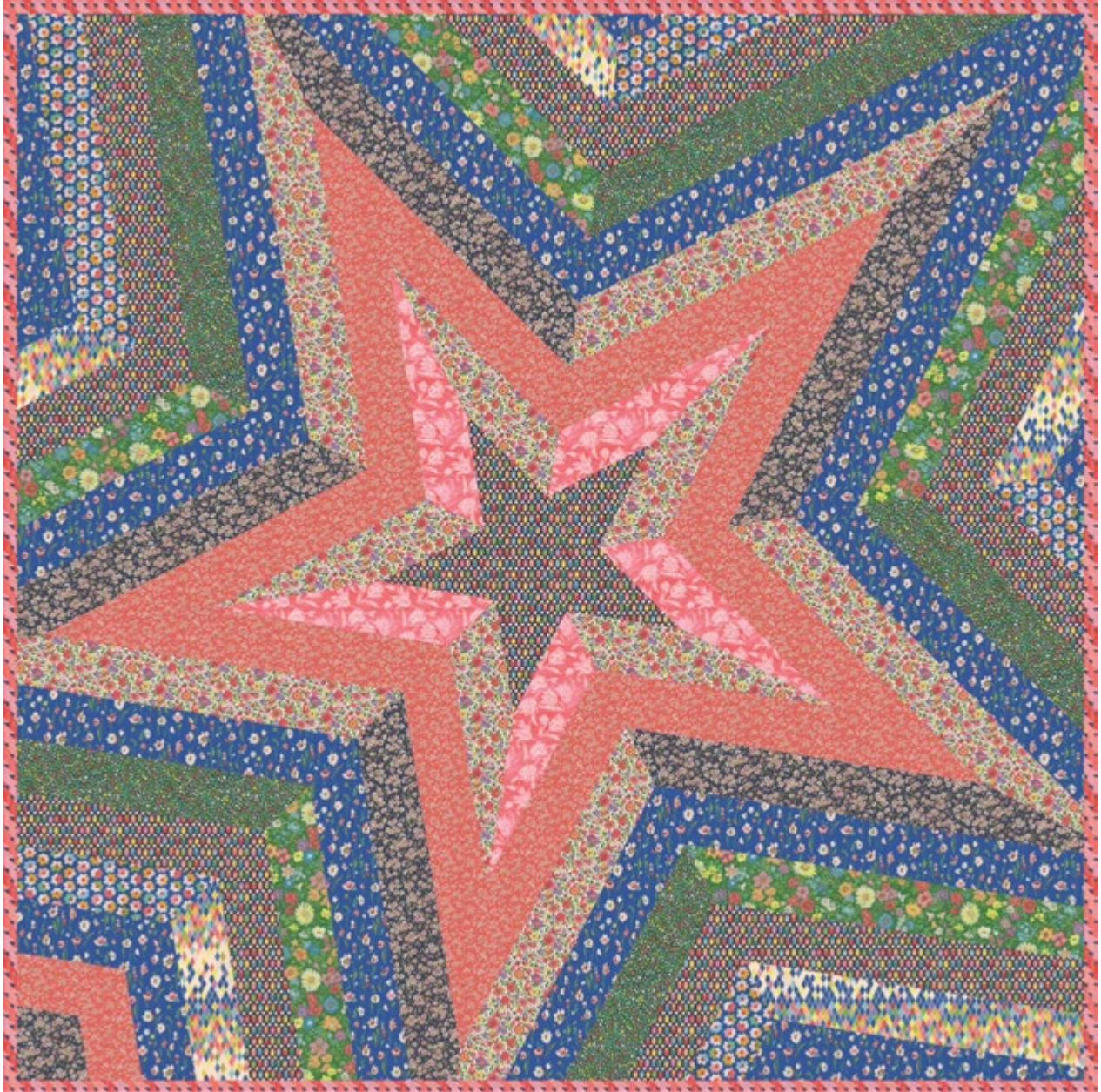


*Free Spirit* 



Featuring Parterre by Sarah Campbell

## Star Storm Quilt

Finished Size: 80" x 80" (2.03m x 2.03m)

*Project designed by Victoria Findlay Wolfe, Re-Colored by FreeSpirit Fabrics*

*Purchase pattern at [vfwquilts.com](http://vfwquilts.com)*

**Technique:** Pieced with Paper Templates | **Skill Level:** Advanced Beginner

[freespiritfabrics.com](http://freespiritfabrics.com)

## Fabric Requirements

DESIGN	COLOR	ITEM ID	YARDAGE
(A) Midnight Blossom	DARK	PWSH027.DARK	1 yard (0.91m)
(B) Poppy Field	MULTI	PWSH028.MULTI	$\frac{3}{4}$ yard (0.69m)
(C) Woodland Blooms	BLUE	PWSH029.BLUE	2½ yards (2.29m)
(D) Flowerbed	GREEN	PWSH030.GREEN	$\frac{3}{4}$ yard (0.69m)
(E) Bestfriend	MULTI	PWSH031.MULTI	$\frac{1}{2}$ yard (0.46m)
(F) Cheerfulness	BLUE	PWSH032.BLUE	$\frac{1}{2}$ yard (0.46m)
(G) Brilliant	MULTI	PWSH033.MULTI	1½ yards (1.37m)
(H) Scarlet Blossom	CORAL	PWSH034.CORAL	1⅝ yards (1.49m)
(I) Rosa	HOT	PWSH035.HOT*	$\frac{3}{4}$ yard (0.69m)
(J) Lola	BRIGHT	PWSH037.BRIGHT	1½ yards (1.37m)
(K) Bountiful	CORAL	PWSH038.CORAL	$\frac{3}{4}$ yard (0.69m)

\* includes binding

## Backing (Purchased Separately)

**44" (1.12m) wide**

Cheerfulness

BLUE

PWSH032.BLUE

5 yards (4.57m)

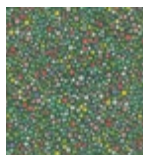
**OR**

**108" (2.74m) wide**

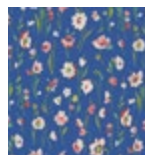
2½ yards (2.29m)



(A)



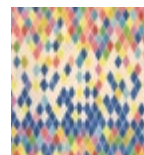
(B)



(C)



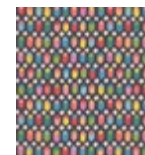
(D)



(E)



(F)



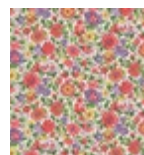
(G)



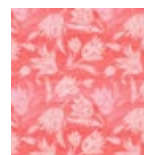
(H)



(I)



(J)



(K)



Backing  
44"

*If kitting, refer to the final pattern for yardage amounts, it is recommended that a sample is made to confirm accuracy.*

