



Featuring *Wonderland* by Tim Holtz

## Starlit Forest Quilt

Finished Size: 70" x 70" (1.78m x 1.78m)

Project designed by Charisma Horton

Purchase pattern at [charismascorner.com](http://charismascorner.com)

Technique: Pieced | Skill Level: Advanced Beginner

## Fabric Requirements

DESIGN	COLOR	ITEM ID	YARDAGE
(A) 25th	Multi	FNTH001.MULTI	½ yard (0.46m)
(B) Xmas Stripe	Multi	FNTH002.MULTI	⅛ yard (0.11m)
(C) Jolly Holly	White	FNTH003.WHITE	¼ yard (0.23m)
(D) Foulard	Multi	FNTH004.MULTI	⅛ yard (0.11m)
(E) Winter Plaid	Multi	FNTH005.MULTI*	2¼ yards (2.06m)
(F) Tidings Type	Red	FNTH006.RED	¼ yard (0.23m)
(G) Tidings Type	White	FNTH006.WHITE	2½ yards (2.29m)
(H) English Holly	Green	FNTH007.GREEN	½ yard (0.46m)
(I) Leaf Medallion	Green	FNTH008.GREEN	¼ yard (0.23m)
(J) Holiday Plaid	Neutral	FNTH009.NEUTRAL	½ yard (0.46m)
(K) Flannel Solid	Ink	FNTP007.INK	½ yard (0.46m)
(L) Flannel Solid	Pine Fresh	FNTP007.PINEFRESH	¼ yard (0.23m)

\* includes binding

## Backing (Purchased Separately)

44" (1.12m) wide

English Holly

OR

108" (2.74m) wide

Green

FNTH007.GREEN

4¼ yards (3.89m)

2¼ yards (2.06m)



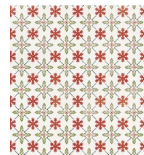
(A)



(B)



(C)



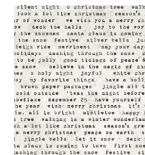
(D)



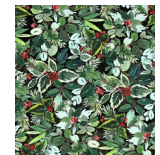
(E)



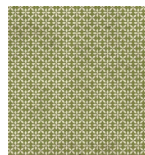
(F)



(G)



(H)



(I)



(J)



(K)



(L)



Backing  
44"

If kitting, refer to the final pattern for yardage amounts, it is recommended that a sample is made to confirm accuracy.