

Featuring August 2023 by Kaffe Fassett Collective

# Steppe Quilt

Finished Size: 50" x 72" (1.27m x 1.83m)

Project designed by Tammy Silvers -Tamarinis

Purchase pattern at [tamarinis.com](http://tamarinis.com)

Technique: Pieced | Skill Level: Advanced Beginner

[freespiritfabrics.com](http://freespiritfabrics.com)



# Steppe Quilt

## Fabric Requirements

DESIGN	COLOR	ITEM ID	YARDAGE
(A) Curly Kale	Red	PWPJ120.RED	½ yard (0.46m)
(B) Floating Hibiscus	Red	PWPJ122.RED	¾ yard (0.34m)
(C) Hyacinthus	Red	PWPJ123.RED	½ yard (0.46m)
(D) Camo Flower	Pink	PWBM088.PINK	¼ yard (0.23m)
(E) Camo Flower	Red	PWBM088.RED	¼ yard (0.23m)
(F) Gingham	Blue	PWBM089.BLUE	2 yards (1.83m)
(G) Gingham	Green	PWBM089.GREEN	¼ yard (0.23m)
(H) Gingham	Red	PWBM089.RED*	½ yard (0.46m)
(I) Paisley Dot	Orange	PWBM090.ORANGE	¾ yard (0.34m)
(J) Zebra Lilly	Orange	PWBM091.ORANGE	¾ yard (0.69m)
(K) Reflections	Orange	PWBM087.ORANGE	1 yard (0.91m)

\* includes binding

## Backing (Purchased Separately)

**44" (1.12m) wide**

Zebra Lilly

Pink PWBM091.PINK 4 yards (3.66m)

**OR**

**108" (2.74m) wide**

Pebble Mosaic

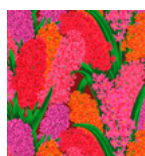
Prune QBBM004.PRUNE 2 yards (1.83m)



(A)



(B)



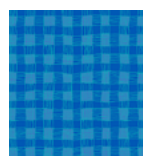
(C)



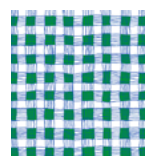
(D)



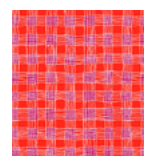
(E)



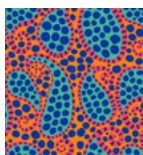
(F)



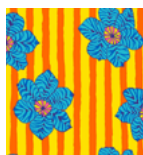
(G)



(H)



(I)



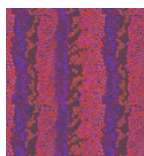
(J)



(K)



Backing  
44"



Backing  
108"

*If kitting, refer to the final pattern for yardage amounts, it is recommended that a sample is made to confirm accuracy.*