

# Stirring Up Trouble Quilt

Featuring Mystic Moonlight by Rachel Hauer

<b>Collection:</b>	Mystic Moonlight by Rachel Hauer
<b>Techniques:</b>	Pieced with Appliqué center
<b>Skill Level:</b>	Intermediate
<b>Finished Sizes:</b>	<b>Finished Size:</b> 64" x 64" (1.63m x 1.63m) <b>Finished Block Size:</b> 29 <sup>7</sup> / <sub>8</sub> " x 29 <sup>7</sup> / <sub>8</sub> " (75.88cm x 75.88cm)

*All possible care has been taken to ensure the accuracy of this pattern. We are not responsible for printing errors or the manner in which individual work varies. Please read the instructions carefully before starting this project. If kitting, it is recommended a sample is made to confirm accuracy.*

Project designed by Stacey Day | Tech edited by Alison M. Schmidt

## Fabric Requirements

DESIGN	COLOR	ITEM ID	YARDAGE
(A) Batstooth	Purple	PWRH037.PURPLE	½ yard (0.46m)
(B) Bat & Moth	Orange	PWRH086.ORANGE	½ yard (0.46m)
(C) Crow Damask	Multi	PWRH087.MULTI	⅝ yard (0.57m)
(D) Pumpkin Damask	Olive	PWRH088.OLIVE	½ yard (0.46m)
(E) Skull Damask	Purple	PWRH089.PURPLE	½ yard (0.46m)
(F) Wise Owl	Olive	PWRH090.OLIVE	FQ (45.72cm x 53.34cm)
(G) Cottage Halloween	Purple	PWRH091.PURPLE	½ yard (0.46m)
(H) Halloween Stripe	Orange	PWRH092.ORANGE	½ yard (0.46m)
(I) Moons	Black	PWRH094.BLACK	½ yard (0.46m)
(J) Stars	Orange	PWRH095.ORANGE	1¾ yards (1.60m)
(K) Stripe	Orange	PWRH096.ORANGE*	⅝ yard (0.57m)
(L) Moth Cat	Turquoise	PWRH097.TURQ	½ yard (0.46m)

\* denotes binding

## Backing (Purchased Separately)

**44" (1.12m) wide**

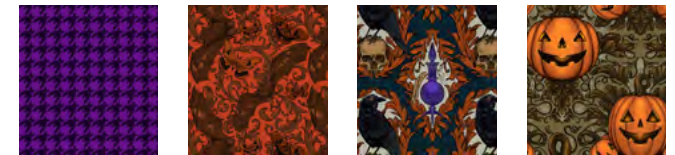
Pumpkin Grid Green PWRH093.GREEN

**OR**

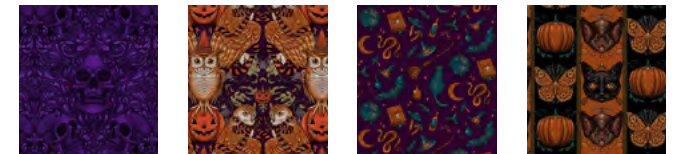
**108" (2.74m) wide**

4⅞ yards (3.77m)

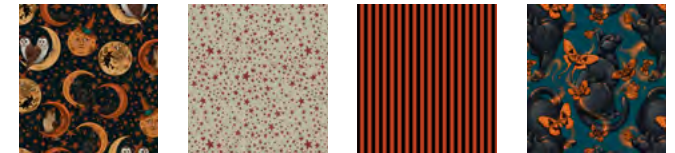
2⅞ yards (1.94m)



(A) (B) (C) (D)



(E) (F) (G) (H)



(I) (J) (K) (L)



Backing

44"

## Additional Recommendations

- 100% cotton thread in colors to match
- 72" x 72" (1.83m x 1.83m) batting
- template plastic

### Optional:

- Spray starch
- Removable fabric marker

## Preparation

1. Print template patterns 1, 2, and 4 (pages 9-10) at 100%/actual size. Print template pattern 3 (page 11) at 200% if possible, or at 100% and then make a copy that is enlarged by 200%. See tip on page 11 if you have difficulty printing template 3. Measure the print check boxes to ensure paper patterns are the correct size.
2. Join template patterns 3a and 3b as noted on the pattern.
3. Copy template 2 and 4 onto template plastic for fussy cutting and copy the grainline markings. Note: Template 4 has seam allowance included but will be appliquéd to the completed quilt top using a finished-edge technique. If you prefer a raw-edge finish, remove the seam allowance from the template.
4. Cut out all the template shapes on the outer lines.

## Cutting

### WOF = Width of Fabric, cut from selvage to selvage

- Starch fabrics and let dry prior to cutting to reduce the possibility of stretching/distorting the bias-cut edges.
- To fussy cut fabric pieces, place the templates right side up, on the right side of a single layer of fabric, over the desired motif.
- To avoid trimming away the template edges, first trace around the template with a removable fabric marker, remove the template, and then cut out on the inside edge of the traced line using scissors or a rotary cutter and a ruler placed to cover the area to be fussy cut. Be careful not to overcut too much beyond the marked line. You may wish to trace all the multiples first, then cut. If the fabric moves while tracing, place a piece of fine grit sandpaper underneath the fabric to hold secure.
- Remember pieces cut from templates have bias edges, so handle with care.
- For most efficient use of fabrics, when subcutting 3¼" strips, cut the longest pieces first, then cut the next longest piece possible from each strip's leftover length.

### From Fabrics A, B, D, E, G, H, I, and L, cut from each:

- (4) 3¼" x WOF; subcut
  - (1) 3¼" x 24"
  - (1) 3¼" x 22"
  - (1) 3¼" x 20"
  - (1) 3¼" x 17"
  - (1) 3¼" x 15"
  - (1) 3¼" x 13"
  - (1) 3¼" x 10"

### From Fabric C, fussy cut:

- (8) Template 2, centered on the raven motif

### From Fabric F, fussy cut:

- (1) Template 4, centered on the single owl motif

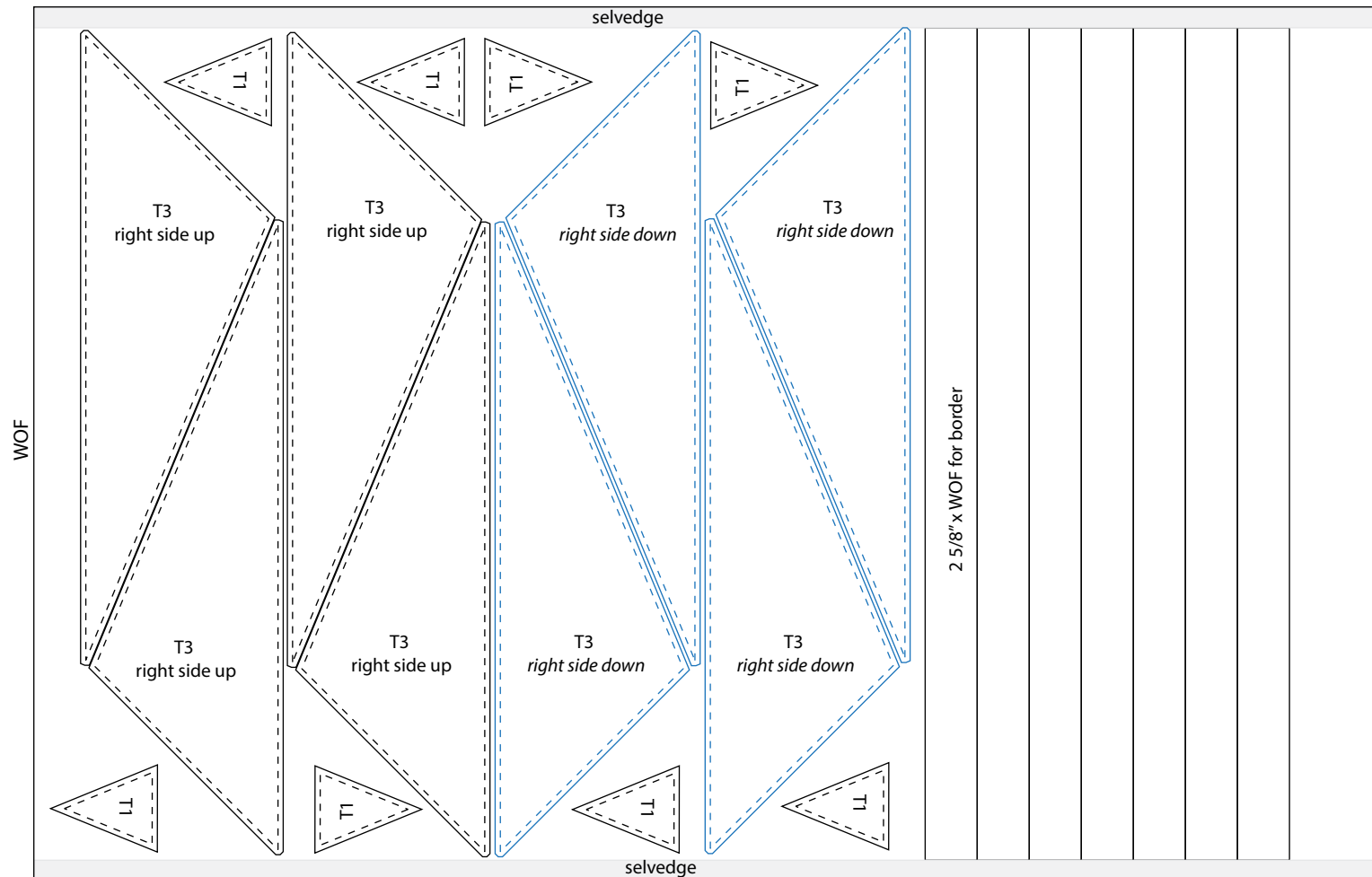
**From Fabric J, cut:**

- (8) Template 1
- (4) Template 3 right side up (RSU)
- (4) Template 3 right side down (RSD)
- (7) 2<sup>5</sup>/<sub>8</sub>" x WOF for borders

**From Fabric K, cut:**

- enough 2<sup>1</sup>/<sub>2</sub>"-wide\* bias strips for 275" of bias binding
- \*or 2<sup>1</sup>/<sub>4</sub>"- wide if preferred*

**Fabric J Cutting Diagram**

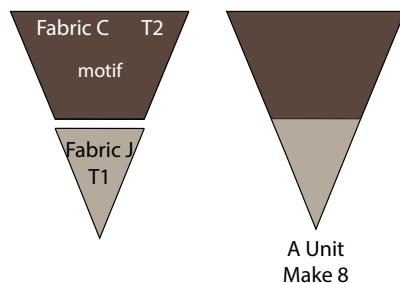


## Instructions

**Note:** All seam allowances are  $\frac{1}{4}$ " and pieces are sewn right sides together. Press seam allowances open unless otherwise stated.

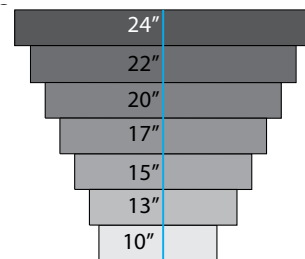
1. Sew a **Fabric J** Template 1 piece to the bottom of a **Fabric C** Template 2 piece, matching centers, to make an A Unit. Make (8). (**Fig. 1**)

**Fig. 1**



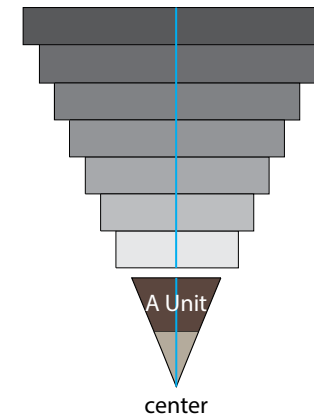
2. Fold each  $3\frac{1}{4}$ " rectangle in half, matching the short ends, and crease (or use a removable fabric marker) to mark the centers. Following the table (shown right) for fabric placement, sew the strips together in order from longest to shortest, matching centers, in the order listed in the table, to make a strip set (**Fig. 2**). Make 8 unique strip sets, labeling each as it is completed. Press the odd strip set seams towards the longer strips and the even strip set seams in the opposite direction.

**Fig. 2**



3. Fold each A Unit in half to find the center. Sew an A Unit to the bottom of each strip set matching centers (**Fig. 3**).

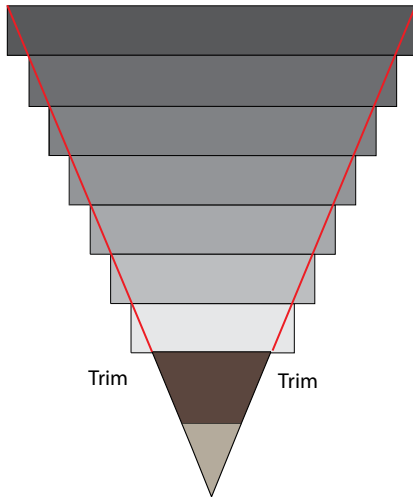
**Fig. 3**



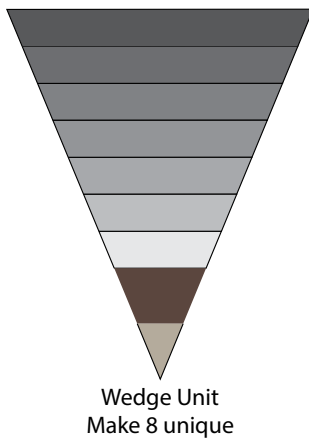
Fabric Placement Table							
Strip set	24"	22"	20"	17"	15"	13"	10"
1	Fabric A	Fabric I	Fabric H	Fabric B	Fabric D	Fabric L	Fabric G
2	Fabric E	Fabric A	Fabric I	Fabric H	Fabric B	Fabric D	Fabric L
3	Fabric G	Fabric E	Fabric A	Fabric I	Fabric H	Fabric B	Fabric D
4	Fabric L	Fabric G	Fabric E	Fabric A	Fabric I	Fabric H	Fabric B
5	Fabric D	Fabric L	Fabric G	Fabric E	Fabric A	Fabric I	Fabric H
6	Fabric B	Fabric D	Fabric L	Fabric G	Fabric E	Fabric A	Fabric I
7	Fabric H	Fabric B	Fabric D	Fabric L	Fabric G	Fabric E	Fabric A
8	Fabric I	Fabric H	Fabric B	Fabric D	Fabric L	Fabric G	Fabric E

4. Using the A Unit as a guide, trim the ends of the strip sets in line with the A Unit to form a Wedge Unit, labeled with the same number as the strip set used, to make a total of 8 unique Wedge Units. (**Fig. 4a, 4b**)

**Fig. 4a**

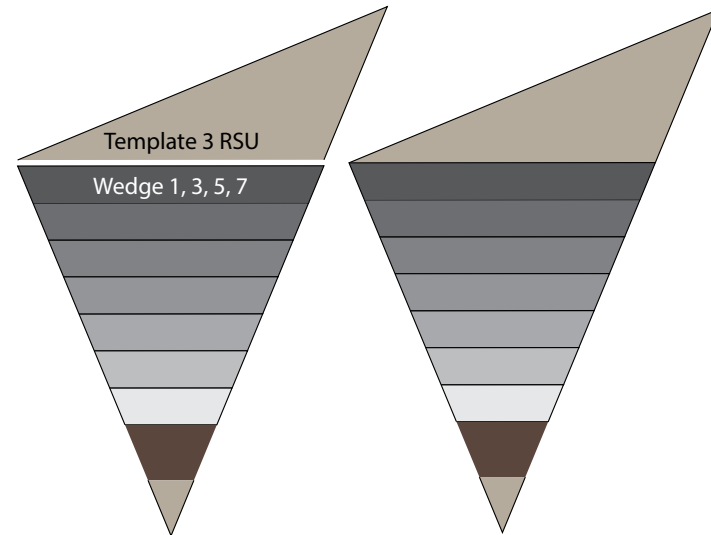


**Fig. 4b**

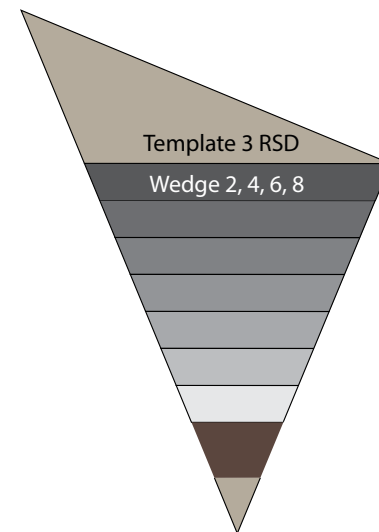


5. Pin and sew a **Fabric J** Template 3 RSU to the top of Wedge Units 1, 3, 5, and 7 (**Fig. 5a**). Pin and sew a **Fabric J** Template 3 RSD to the top of Wedge Units 2, 4, 6, and 8 (**Fig. 5b**).

**Fig. 5a**

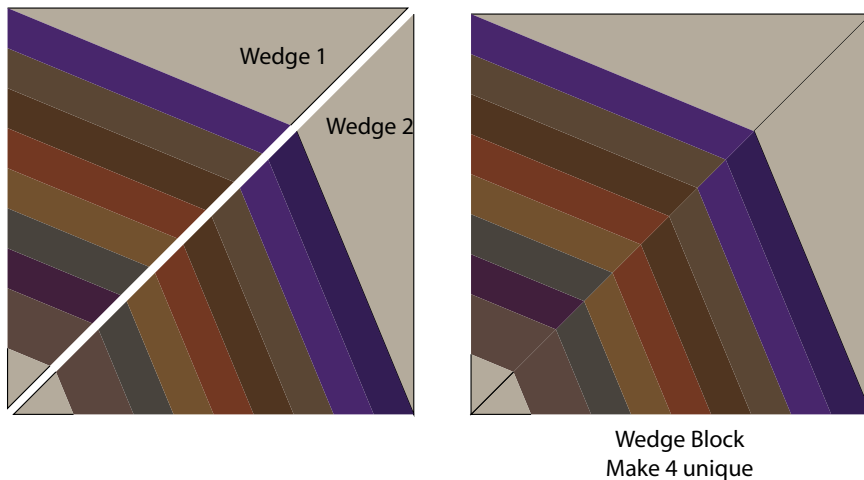


**Fig. 5b**



6. Pin, matching seam intersections carefully, then sew the wedges together into pairs: 1-2, 3-4, 5-6, and 7-8 (**Fig. 6**), to make 4 unique Wedge Blocks.

**Fig. 6**



## Quilt Top Assembly

**Note:** Follow the **Quilt Layout** diagram (page 8) while assembling the quilt. Measure the **Quilt Center** width and height before cutting and adding borders and adjust border measurements if necessary to match your measurements.

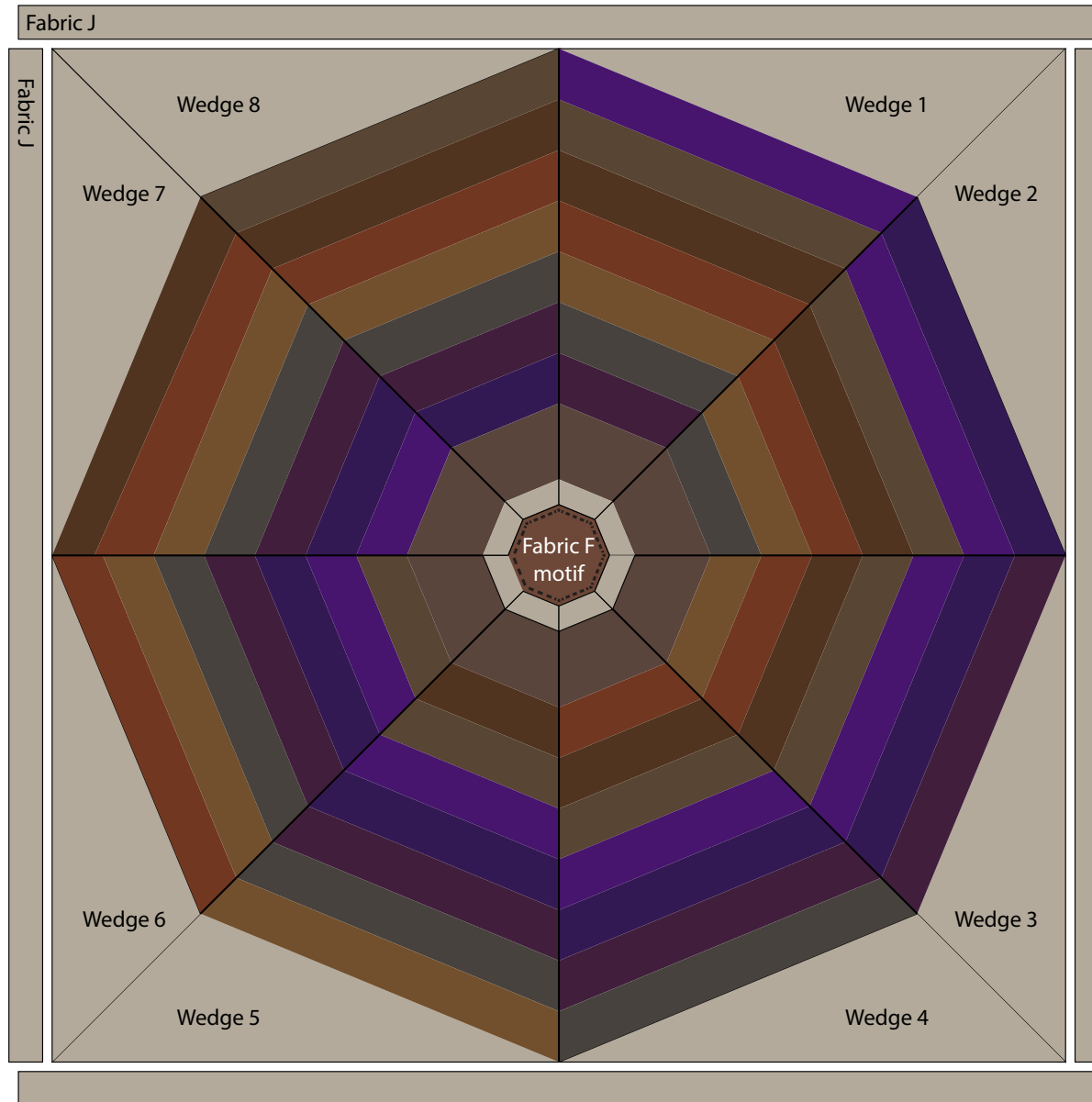
7. Arrange the Wedge Blocks in 2 rows of 2, making sure the wedges stay in numerical order clockwise around the quilt. Sew the blocks into rows, then sew the rows together to complete the quilt center (60¼" including seam allowances).

8. Press the seam allowance of the **Fabric F** Template 4 piece to the wrong side. Fold in half, finger press, then half again to find the center. Place a pin straight through the center, and then into the center of the quilt top, making sure the owl motif is right-reading aligned with the top edge of the quilt. Secure in place with pins and topstitch around the outside edge to machine appliqué in place.
9. Sew the **Fabric J** 2½" x WOF strips together end to end. Cut 2 top/bottom borders 64½" and 2 side borders 60¼" long (or the height that your quilt center measures-it may be a hair shorter than 60¼").
10. Sew the **Fabric J** side border strips to the left and right sides of the quilt center, press towards the border, then sew the **Fabric J** top/bottom border strips to the top and bottom to complete the quilt top.

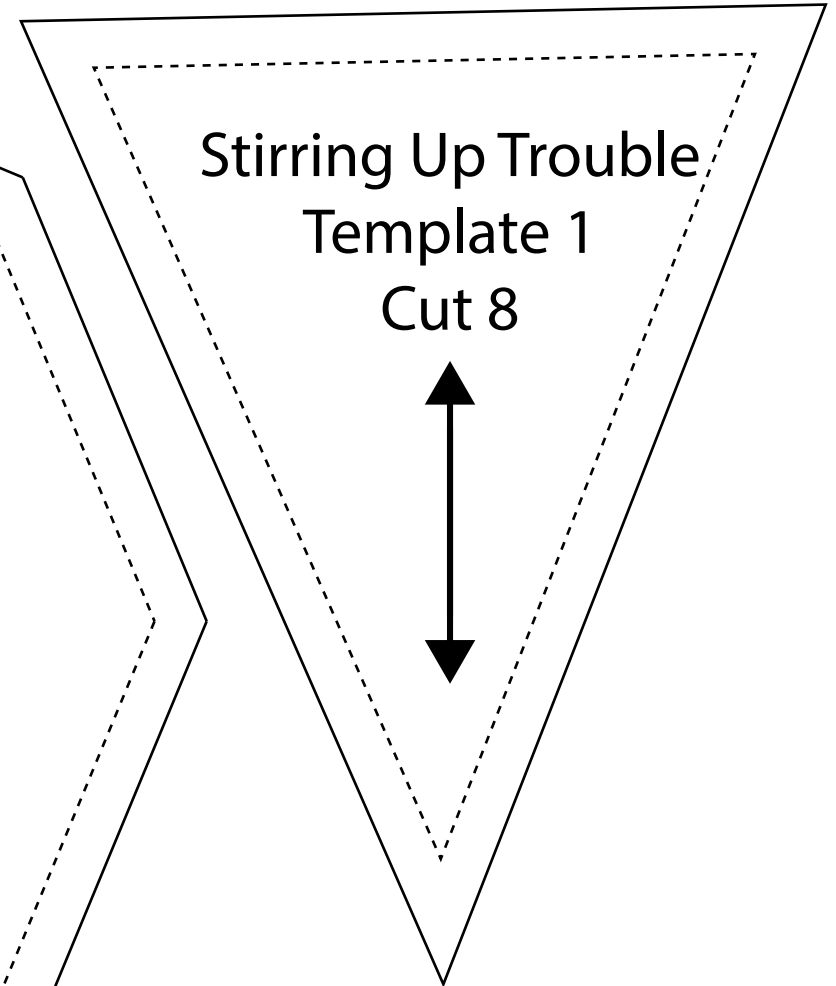
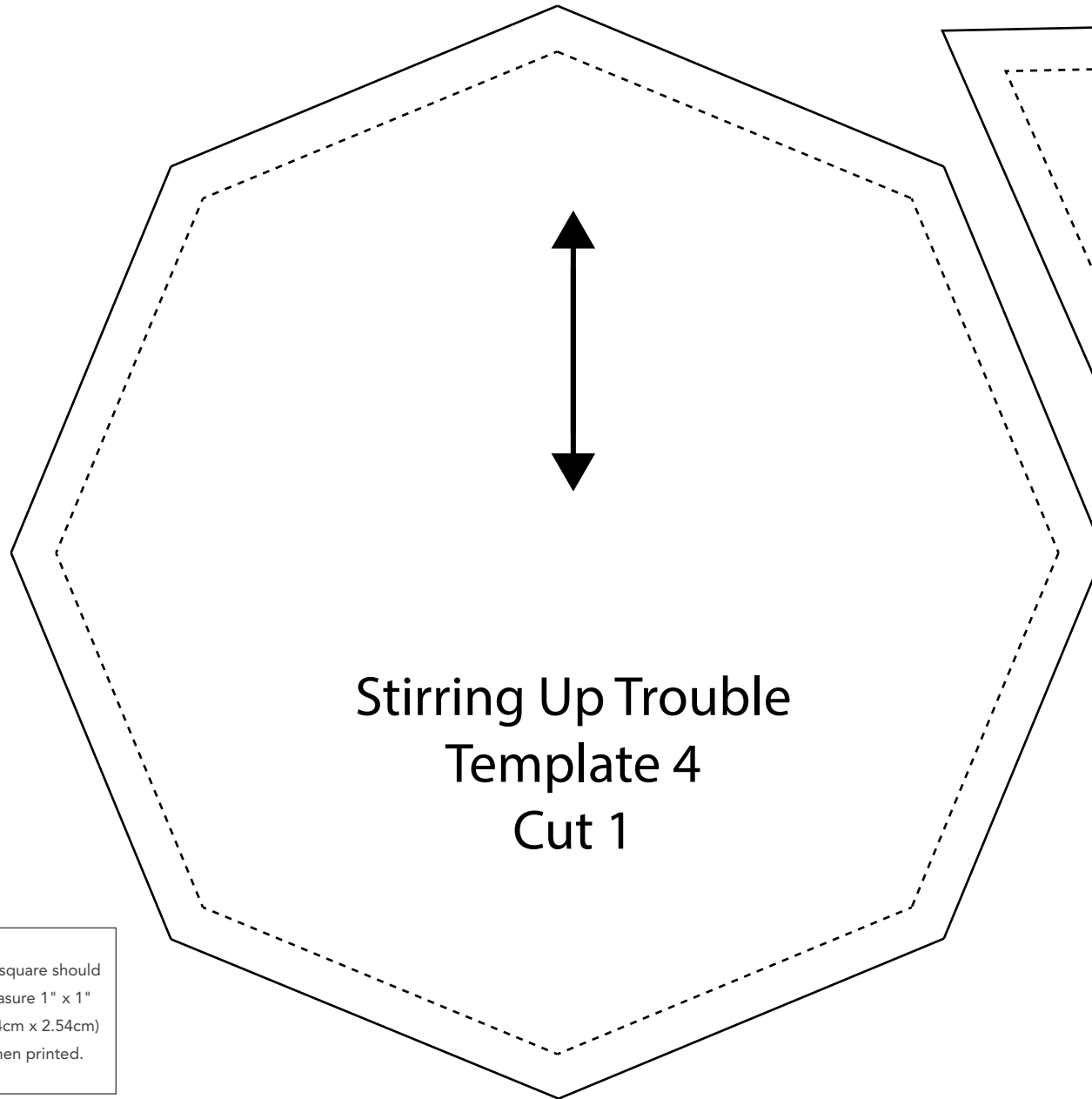
## Finishing

11. Sew together the 2½" **Fabric K** binding strips end to end. Press seams open. Press the binding strip in half wrong sides together.
12. Layer backing (wrong side up), batting, and quilt top (right side up). Baste the layers together and quilt as desired. Trim excess batting and backing even with the top after quilting is completed.
13. Leaving an 8" tail of binding, sew the binding to the top of the quilt through all layers matching all raw edges. Miter corners. Stop approximately 12" from where you started. Lay both loose ends of binding flat along quilt edge. Where the loose ends meet, fold them back on themselves and press to form a crease. Using this crease as your stitching line, sew the two open ends of the binding right sides together. Trim seam to ¼" and press open. Finish sewing binding to quilt.
14. Turn the binding to the back of quilt and hand-stitch in place.

## Quilt Layout

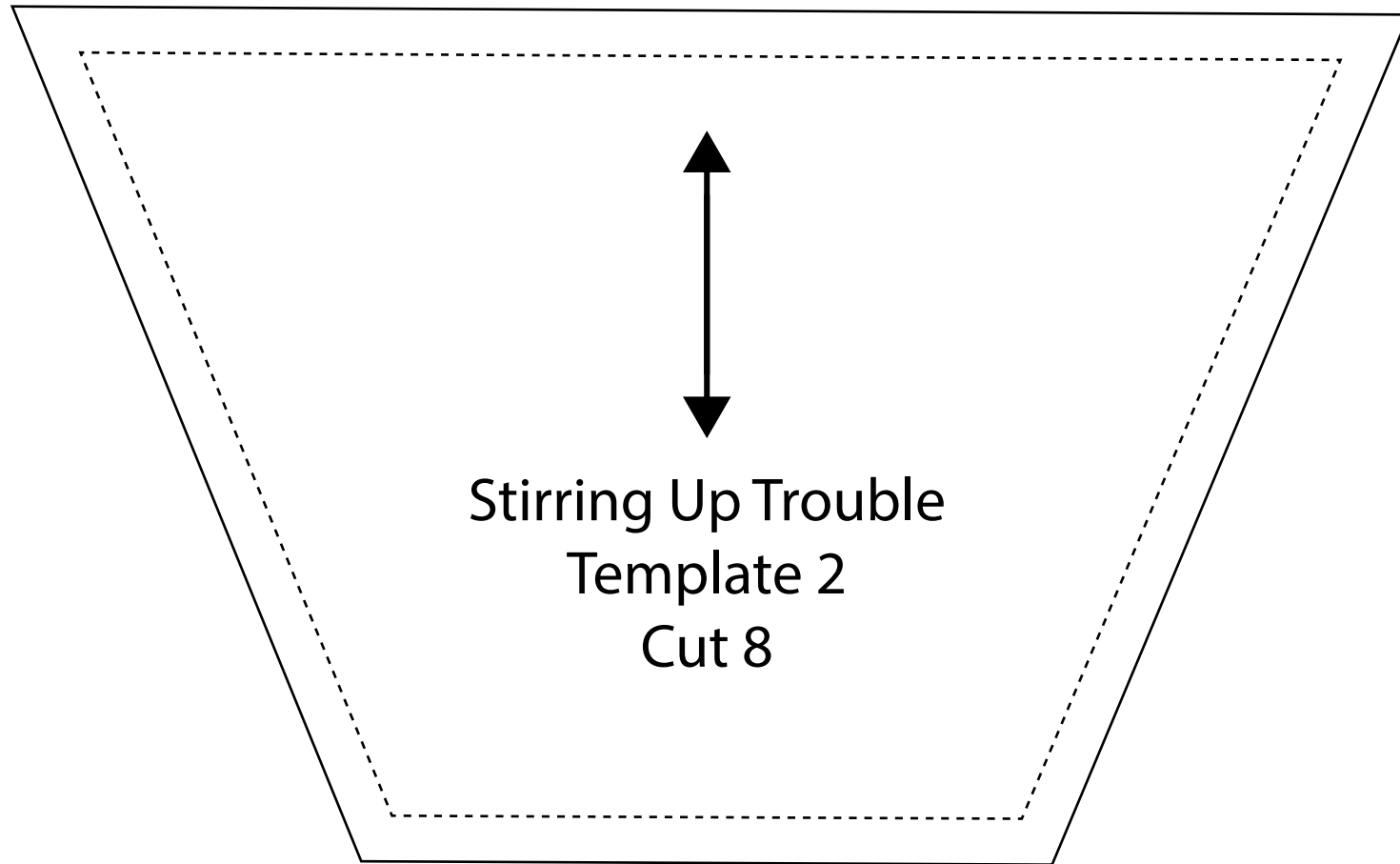






This square should measure 1" x 1" (2.54cm x 2.54cm) when printed.

**\*\*\* Measure templates before cutting to confirm printing at 100%\*\*\***



This square should  
measure 1" x 1"  
(2.54cm x 2.54cm)  
when printed.

**\*\*\* Measure templates before cutting to confirm printing at 100%\*\*\***

This square should measure 1" x 1" (2.54cm x 2.54cm) when printed.

\*\*\* Measure templates before cutting to confirm printing at 200%\*\*\*

**Tip:** To print at 200% scale across multiple 8½" x 11 pages on a home printer, select 'Tile' or 'Poster' after adjusting scale. If unable to select this option, look for an 'Advanced' setup option and turn OFF 'Print as Image' to re-enable tiled printing.

Note to copy shops: Permission is granted to the pattern holder to enlarge this sheet 200%.

