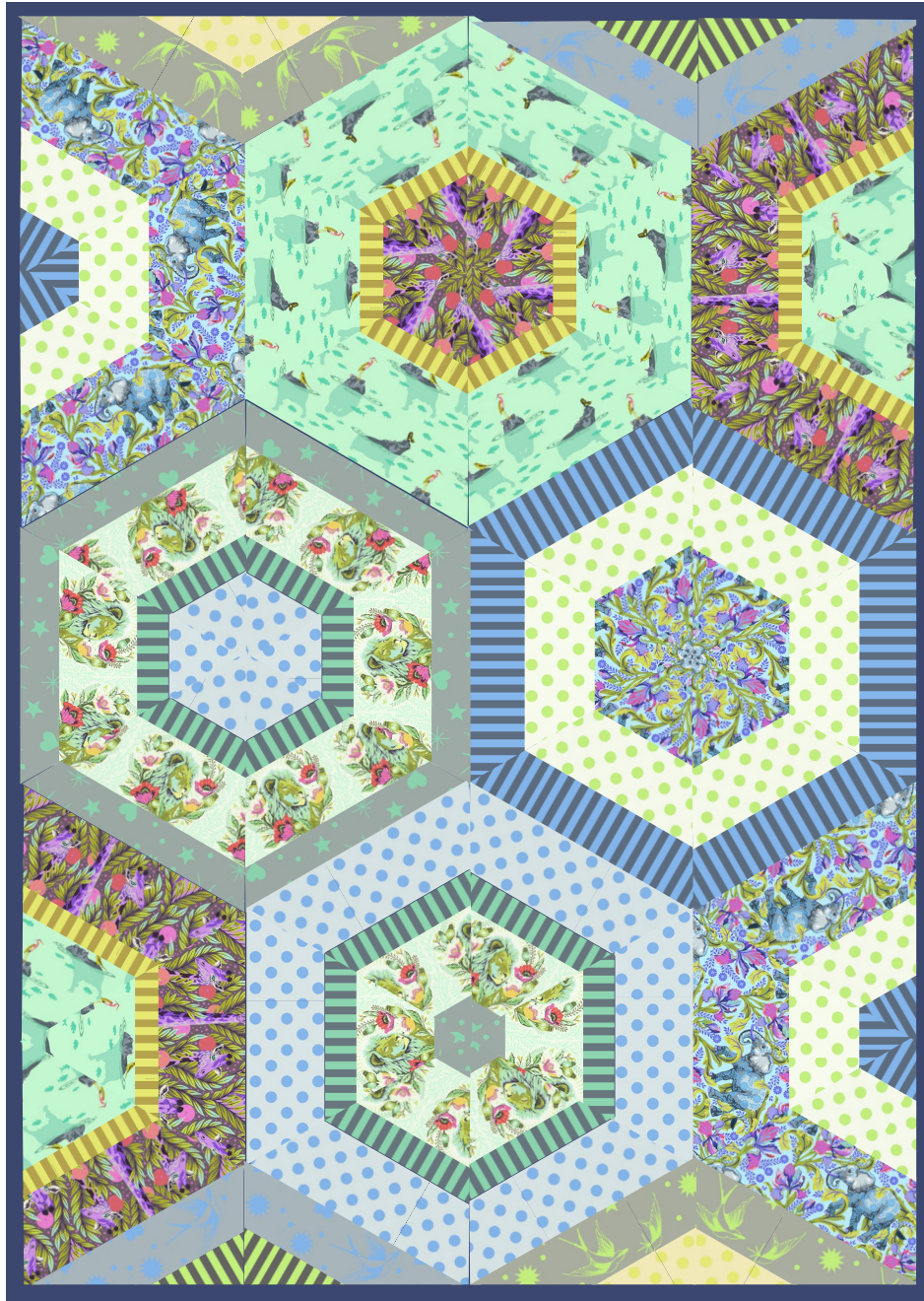


*Free Spirit* 



Featuring Everglow and True Colors by Tula Pink

# Succulent Garden Quilt (Cool)

Finished Size: 56" x 82" (1.42m x 2.08m)

*Project designed by Crimson Tate*

*Purchase pattern at [crimsontate.com](http://crimsontate.com)*

Technique: Pieced | Skill Level: Advanced Beginner

[freespiritfabrics.com](http://freespiritfabrics.com)

# Succulent Garden Quilt (Cool)

## Fabric Requirements

DESIGN	COLOR	ITEM ID	YARDAGE
(A) Good Hair Day	Karma	PWTP201.KARMA	¾ yard (0.69m)
(B) All Ears	Aura	PWTP202.AURA	⅔ yard (0.61m)
(C) Neck For Days	Mystic	PWTP203.MYSTIC	⅝ yard (0.58m)
(D) My Hippos Don't Lie	Spirit	PWTP204.SPIRIT	¾ yard (0.69m)
(E) Neon Tent Stripe	Moon Beam	PWTP069.MOONBEAM	¼ yard (0.23m)
(F) Neon Tent Stripe	Karma	PWTP069.KARMA	⅜ yard (0.34m)
(G) Neon Tent Stripe	Spirit	PWTP069.SPIRIT	¼ yard (0.23m)
(H) Neon Tent Stripe	Aura	PWTP069.AURA	½ yard (0.46m)
(I) Neon Pom Pom	Moon Beam	PWTP118.MOONBEAM	¼ yard (0.23m)
(J) Neon Pom Pom	Karma	PWTP118.KARMA	½ yard (0.46m)
(K) Neon Pom Pom	Aura	PWTP118.AURA	⅝ yard (0.57m)
(L) Neon Fairy Flakes	Moon Beam	PWTP157.MOONBEAM	¼ yard (0.23m)
(M) Neon Fairy Flakes	Karma	PWTP157.KARMA	¼ yard (0.23m)
(N) Neon Fairy Flakes	Spirit	PWTP157.SPIRIT	⅜ yard (0.35m)
(O) Neon Fairy Flakes	Aura	PWTP157.AURA	¼ yard (0.23m)
(P) Designer Essential Solid	Celestial	CSFSESS.CELESTIAL*	⅝ yard (0.58m)

\* includes binding

## Backing (Purchased Separately)

**44" (1.12m) wide**

Good Hair Day

Karma

PWTP201.KARMA

5 yards (4.57m)

**OR**

**108" (2.74m) wide**

Rainbow Hexy XL

Peacock

QBTP012.PEACOCK

2½ yards (2.29m)



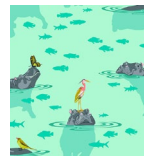
(A)



(B)



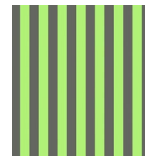
(C)



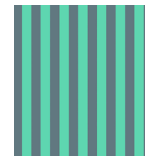
(D)



(E)



(F)



(G)



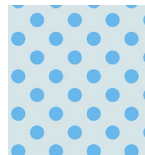
(H)



(I)



(J)



(K)



(L)



(M)



(N)



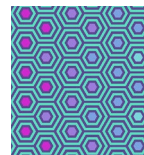
(O)



(P)



Backing  
44"



Backing  
108"

*If kitting, refer to the final pattern for yardage amounts, it is recommended that a sample is made to confirm accuracy.*