



Free Spirit

# Tabby Mountain Quilt

Featuring Tabby Road Déjà vu by Tula Pink

<b>Collection:</b>	Tabby Road Déjà vu by Tula Pink
<b>Technique:</b>	Pieced
<b>Skill Level:</b>	Advanced Beginner
<b>Finished Size:</b>	60" x 80" (1.52m x 2.03m)

*All possible care has been taken to ensure the accuracy of this pattern. We are not responsible for printing errors or the manner in which individual work varies. Please read the instructions carefully before starting this project. If kitting, it is recommended a sample is made to confirm accuracy.*

Project designed by Tula Pink | Tech edited by Alison M. Schmidt

## Fabric Requirements

DESIGN	COLOR	ITEM ID	YARDAGE
<b>(A) Disco Stripe</b>	Prism	PWTP231.PRISM*	1½ yards (1.37m)
<b>(B) Club Kitty</b>	Electroberry	PWTP233.ELECTROBERRY	⅔ yard (0.60m)
<b>(C) Disco Kitty</b>	Technomint	PWTP092.TECHNOMINT	⅔ yard (0.60m)
<b>(D) Cat Snacks</b>	Electroberry	PWTP094.ELECTROBERRY	⅔ yard (0.60m)
<b>(E) Fur Ball</b>	Technomint	PWTP097.TECHNOMINT	⅔ yard (0.60m)
<b>(F) Eek</b>	Electroberry	PWTP093.ELECTROBERRY	⅔ yard (0.60m)
<b>(G) Cat Eyes</b>	Prism	PWTP095.PRISM	½ yard (0.46m)
<b>(H) Disco Lucy</b>	Prism	PWTP232.PRISM	½ yard (0.46m)
<b>(I) Tula Pink Solids</b>	Matcha	CSFSESS.MATCHA	⅔ yard (0.60m)
<b>(J) Tula Pink Solids</b>	Aegean	CSFSESS.AEGEA	⅔ yard (0.60m)
<b>(K) Tula Pink Solids</b>	Legendary	CSFSESS.LEGENDARY	⅔ yard (0.60m)
<b>(L) Tula Pink Solids</b>	Moonflower	CSFSESS.MOONFLOWER	⅔ yard (0.60m)
<b>(M) Tula Pink Solids</b>	Amethyst	CSFSESS.AMETHYST	⅔ yard (0.60m)
<b>(N) Tula Pink Solids</b>	Stargazer	CSFSESS.STARGAZER	⅔ yard (0.60m)
<b>(O) Tula Pink Solids</b>	Hibiscus	CSFSESS.HIBIS	⅔ yard (0.60m)
<b>(P) Tula Pink Solids</b>	Snapdragon	CSFSESS.SNAPDRAGON	⅔ yard (0.60m)

\* includes binding

## Backing (Purchased Separately)

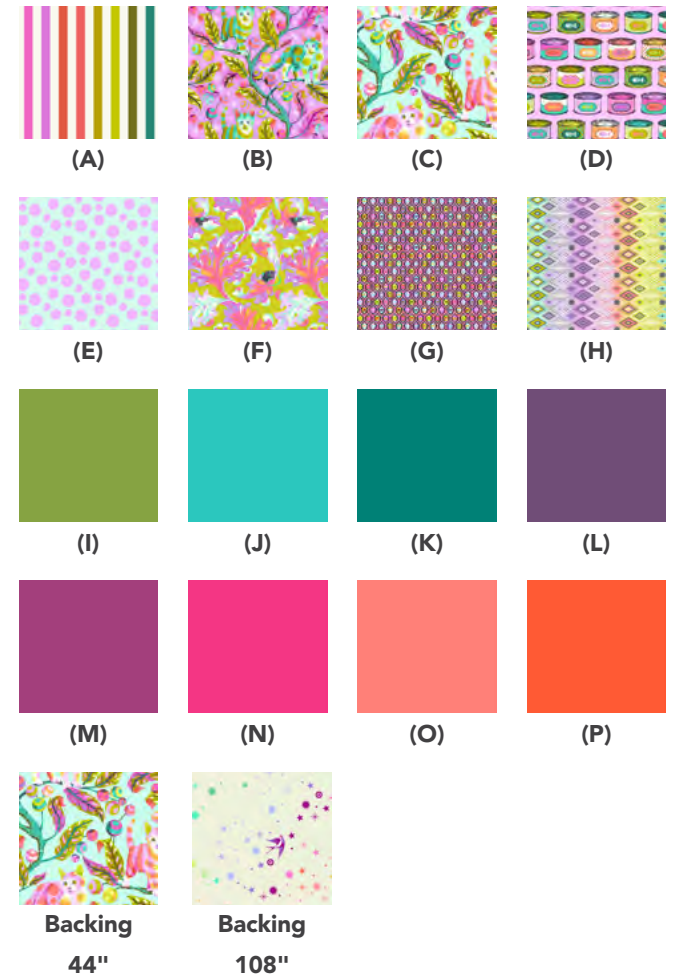
**44" (1.12m) wide**

Disco Kitty Technomint PWTP092.TECHNOMINT 5 yards (4.57m)

**OR**

**108" (2.74m) wide**

Fairy Dust XL Cotton Candy QBTP011.COTTONCANDY 2 yards (1.83m)



## Additional Recommendations

- 100% cotton thread in colors to match
- 68" x 88" (1.73 x 2.24m) batting
- Template plastic, optional



## Instructions

**Note:** All seam allowances are  $\frac{1}{4}$ " (.64cm) unless otherwise noted. Sew pieces right sides together. Press seam allowances open unless otherwise indicated.

1. Referring to **Quilt Layout** diagram (page 5), group Center, Side, and reversed Side Triangles together for each row. Note that blocks in every other row are oriented opposite of adjacent rows. If "right reading" fabric is important to you, select triangles cut from directional prints accordingly.
2. Arrange one Center Triangle, and matching Side and reversed Side triangles for Row 1 as shown (**Fig. 3a**). With right sides together align long angled edge of one Side Triangle with adjacent long angled edge of Center Triangle. Sew two triangles together along the long angled edge. Press seam allowances toward the Side Triangle. Repeat to sew remaining Side Triangle to opposite side of Center Triangle. If keeping directional prints right-reading, refer to **Fig. 3b** when arranging triangles. All odd rows will be oriented the same as Row 1, and all even rows will be oriented the same as Row 2. Make (12) Triangle Blocks for each row, for a total of (96) blocks.

Fig. 3a

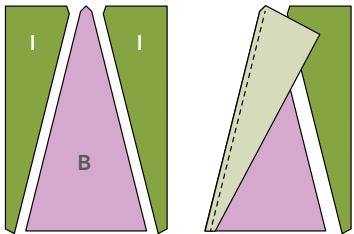
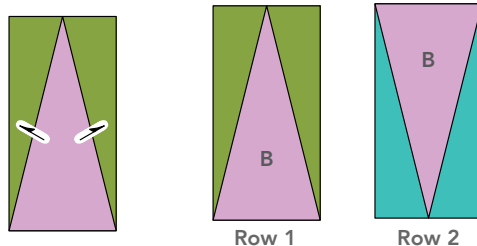


Fig. 3b

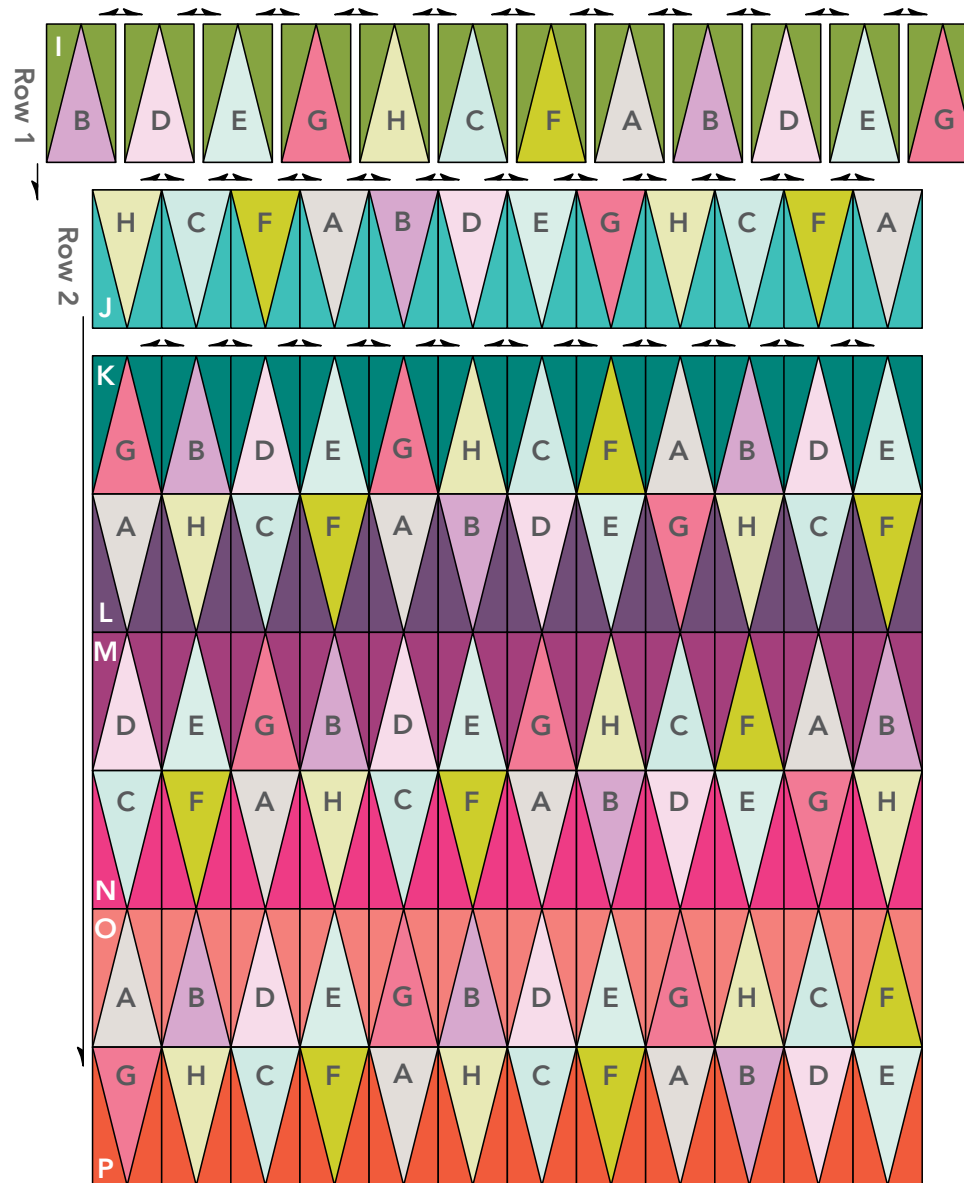


3. Referring to the **Quilt Layout** diagram, arrange Triangle Blocks in (8) rows of (12) blocks each. Note that blocks in each row have the same background fabric and are oriented in the same direction. Sew blocks in each row together along adjacent edges. Press.
4. Sew rows together along adjacent edges to complete quilt top. Press seam allowances in one direction.

## Finishing

5. Sew together  $2\frac{1}{2}$ " **Fabric A** bias binding strips end to end using diagonal seams. Press seams open. Press binding strip in half wrong sides together.
6. Trim selvage edges from backing fabric. Cut yardage into two equal lengths and use a  $\frac{1}{2}$ " seam to sew sections together along one long edge to make quilt backing. Press.
7. Layer backing (wrong side up), batting, and quilt top (right side up). Baste layers together and quilt as desired. Trim excess batting and backing even with quilt top after quilting is completed.
8. Leaving an 8" tail of binding, sew binding to top of quilt through all layers matching all raw edges. Miter corners. Stop approximately 12" from where you started. Lay both loose ends of binding flat along quilt edge. Where these two loose ends meet, fold them back on themselves and press to form a crease. Using this crease as your stitching line, sew two open ends of binding together right sides together. Trim seam to  $\frac{1}{4}$ " and press open. Finish sewing binding to quilt.

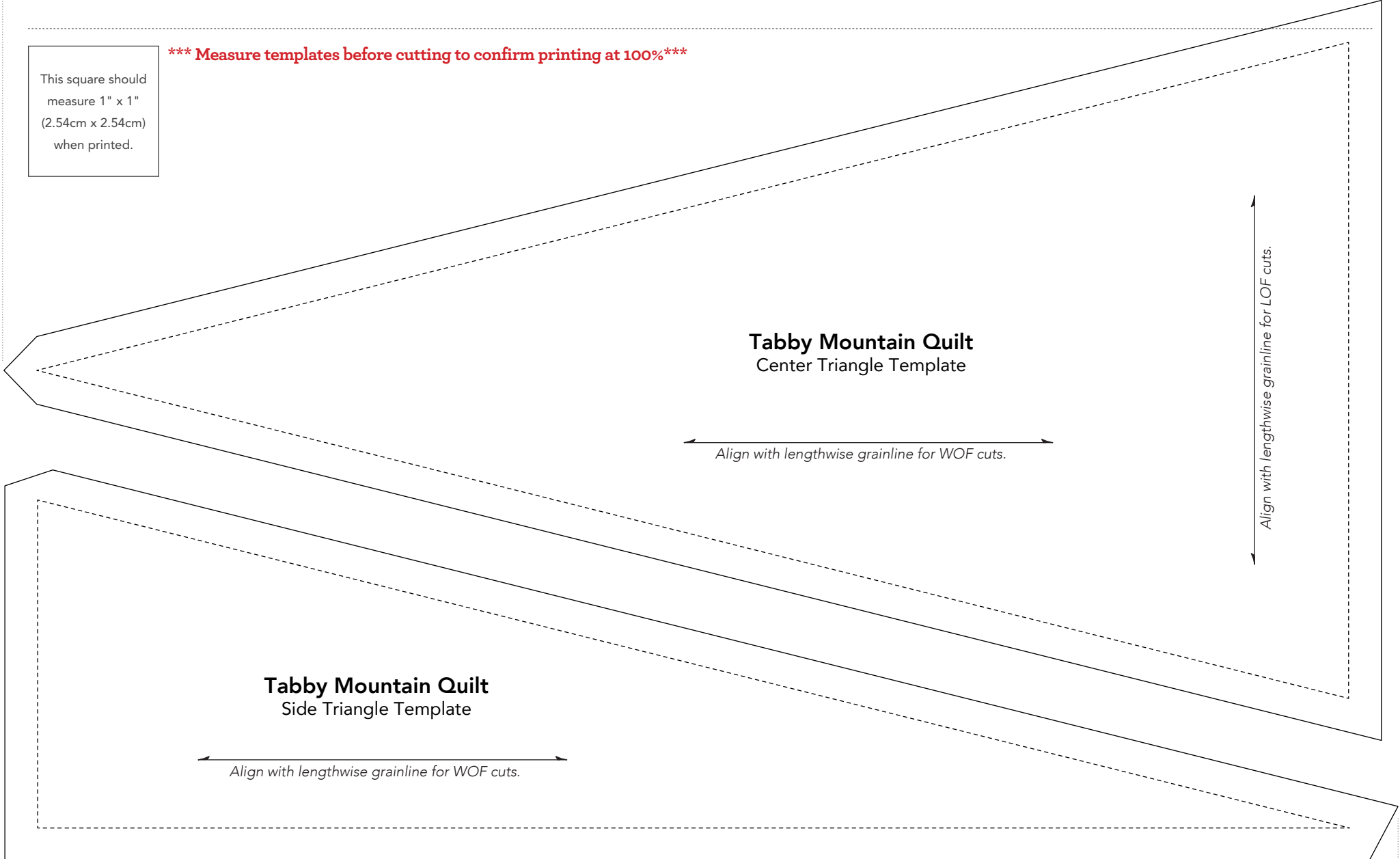
## Quilt Layout



10<sup>1</sup>/<sub>2</sub>" (26.67cm)

This square should measure 1" x 1" (2.54cm x 2.54cm) when printed.

**\*\*\* Measure templates before cutting to confirm printing at 100%\*\*\***



**Tabby Mountain Quilt**  
Center Triangle Template

**Tabby Mountain Quilt**  
Side Triangle Template

10<sup>5</sup>/<sub>8</sub>" (26.98cm)