

Free Spirit 



Featuring *Island Vacation* by Denise Burkitt

The Eliza Quilt

Finished Size: 73" x 92" (1.85m x 2.35m)

Project designed by Erica Jackman - Kitchen Table Quilting

Purchase pattern at shop.kitchentablequilting.com

Technique: Pieced | Skill Level: Advanced Beginner

Fabric Requirements

DESIGN	COLOR	ITEM ID	YARDAGE
(A) Rangoon Creeper	Aqua	PWDB035.AQUA	½ yard (0.46m)
(B) Jungle Magic	Lime	PWDB036.LIME	⅝ yard (0.57m)
(C) Wild and Free	Multi	PWDB038.MULTI	⅝ yard (0.57m)
(D) Peaches and Cream	Peach	PWDB039.PEACH	⅝ yard (0.57m)
(E) Blue Lagoon	Multi	PWDB040.MULTI	⅝ yard (0.57m)
(F) Basketweave	Olive	PWDB041.OLIVE	⅝ yard (0.57m)
(G) Lime Cocktail	Lime	PWDB042.LIME	½ yard (0.46m)
(H) Strawberry Ice	Pink	PWDB043.PINK*	1⅓ yards (1.22m)
(I) Shot Cotton	Glacier	SCGP124.GLACIER	2⅝ yards (2.40m)

* includes binding

Backing (Purchased Separately)

44" (1.12m) wide

Rangoon Creeper

OR

108" (2.74m) wide

Aqua

PWDB035.AQUA

5½ yards (5.03m)

2¾ yards (2.51m)



(A)



(B)



(C)



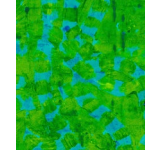
(D)



(E)



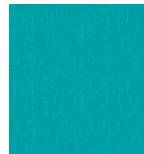
(F)



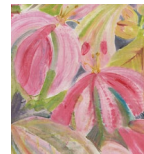
(G)



(H)



(I)



Backing
44"

If kitting, refer to the final pattern for yardage amounts, it is recommended that a sample is made to confirm accuracy.