



Featuring Poppy Pop by Scion

The Eliza Quilt

Finished Size: 73" x 92" (1.85m x 2.34m)

Project designed by Erica Jackman - Kitchen Table Quilting

Purchase pattern at shop.kitchentablequilting.com

Technique: Pieced | Skill Level: Advanced Beginner

Fabric Requirements

DESIGN	COLOR	ITEM ID	YARDAGE
(A) Spike	Chai	PWSC009.CHAI	$\frac{5}{8}$ yard (0.57m)
(B) St Clements	Midnight	PWSC042.MIDNIGHT	$\frac{5}{8}$ yard (0.57m)
(C) Small St Clements	Sky	PWSC043.SKY	$\frac{1}{2}$ yard (0.46m)
(D) Poppy Pop	PoppyRed	PWSC044.POPPYRED	$\frac{1}{2}$ yard (0.46m)
(E) Big Mr Fox	Midnight	PWSC045.MIDNIGHT	$\frac{5}{8}$ yard (0.57m)
(F) Lohko	Midnight	PWSC046.MIDNIGHT*	$\frac{2}{3}$ yard (0.6m)1
(G) Mini Mr Fox	PoppyRed	PWSC047.POPPYRED	$\frac{5}{8}$ yard (0.57m)
(H) Barnie Owl	Denim	PWSC049.DENIM	$\frac{5}{8}$ yard (0.57m)
(I) Akira	Denim	PWSC050.DENIM	$\frac{5}{8}$ yard (0.57m)
(J) Designer Essential Solids	Glacier	CSFSESS.GLACI	2 $\frac{5}{8}$ yards (2.40m)

* includes binding

Backing (Purchased Separately)

44" (1.12m) wide

St Clements

Midnight

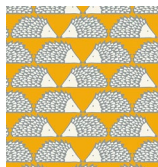
PWSC042.MIDNIGHT

5 $\frac{1}{2}$ yards (5.03m)

OR

108" (2.74m) wide

2 $\frac{3}{4}$ yards (2.51m)



(A)



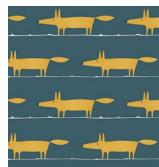
(B)



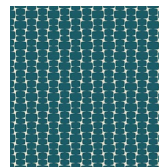
(C)



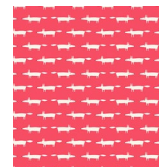
(D)



(E)



(F)



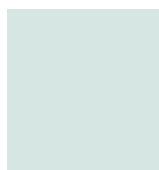
(G)



(H)



(I)



(J)



Backing
44"

If kitting, refer to the final pattern for yardage amounts, it is recommended that a sample is made to confirm accuracy.