

Featuring Bloomology by Monika Forsberg for Conservatory Craft

The Rachel Quilt

Finished Size: 79" x 99" (2.01m x 2.51m)

Project designed by Erica Jackman – Kitchen Table Quilting

Purchase pattern at kitchentablequilting.com

Technique: Pieced | Skill Level: Advanced Beginner



The Rachel Quilt

Fabric Requirements

DESIGN	COLOR	ITEM ID	YARDAGE
(A) Mosaic	Primary	PWMF032.PRIMARY	1/3 yard (0.30m)
(B) Mosaic	Secondary	PWMF032.SECONDARY	1/3 yard (0.30m)
(C) Breeze	Guava	PWMF033.GUAVA	1/3 yard (0.30m)
(D) Breeze	Neapolitan	PWMF033.NEAPOLITAN	1/3 yard (0.30m)
(E) Spangled	Blue	PWMF034.BLUE	1/3 yard (0.30m)
(F) Spangled	Groovy	PWMF034.GROOVY	1/3 yard (0.30m)
(G) Headdress	Navy	PWMF035.NAVY	1/3 yard (0.30m)
(H) Headdress	Tangerine	PWMF035.TANGERINE	1/3 yard (0.30m)
(I) Dizzy	Grass	PWMF036.GRASS	1/3 yard (0.30m)
(J) Dizzy	Plum	PWMF036.PLUM	1/3 yard (0.30m)
(K) Cameo	Maize	PWMF037.MAIZE	1/3 yard (0.30m)
(L) Cameo	Maple	PWMF037.MAPLE	1/3 yard (0.30m)
(M) Hydrangeas	Jade	PWMF038.JADE	1/3 yard (0.30m)
(N) Hydrangeas	Magenta	PWMF038.MAGENTA	1/3 yard (0.30m)
(O) In Town	Sky	PWAH158.SKY	2 1/3 yards (2.13m)
(P) Shot Cotton	Glacier	SCGP124.GLACIER	2 3/4 yards (2.51m)
(Q) Shot Cotton	Heliotrope	SCGP106.HELIOOTROPE*	3/4 yard (0.69m)

* includes binding

Backing (Purchased Separately)

44" (1.12m) wide

Mosaic

OR

108" (2.74m) wide

Delphinium

Primary

PWMF032.PRIMARY

6 yards (5.49m)

Jewel

QBAH004.JEWEL

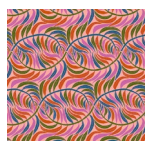
3 yards (2.74m)



(A)



(B)



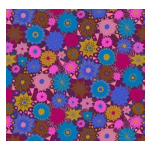
(C)



(D)



(E)



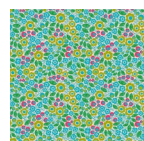
(F)



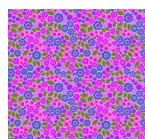
(G)



(H)



(I)



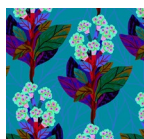
(J)



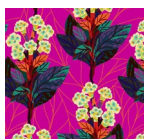
(K)



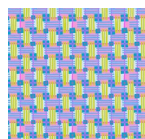
(L)



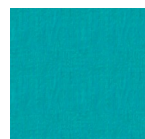
(M)



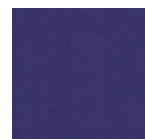
(N)



(O)



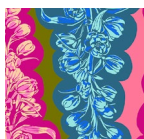
(P)



(Q)



Backing
44"



Backing
108"

*If kitting, refer to the final pattern for yardage amounts,
it is recommended that a sample is made to confirm accuracy.*