



Featuring Temple Garden by Snow Leopard

## Tic Tac Quilt - Kyoto

Finished Size: 46" x 58½" (1.17m x 1.49m)

Project designed by Fabric Café, Re-colored by FreeSpirit Fabrics

Purchase pattern at [fabriccafe.com](http://fabriccafe.com)

Technique: Pieced | Skill Level: Beginner



# Tic Tac Quilt - Kyoto

## Fabric Requirements

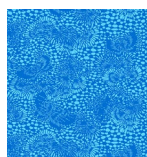
DESIGN	COLOR	ITEM ID	YARDAGE
(A) Katagami	BLUE	PWSL125.BLUE*	1 yard (0.91m)
(B) Peony Cascade	MULTI	PWSL128.MULTI	1 yard (0.91m)
(C) Kyoto	MULTI	PWSL129.MULTI	1 yard (0.91m)

\* includes binding

## Backing (Purchased Separately)

**44" (1.12m) wide**

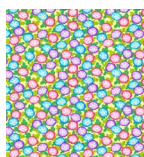
Floral Fans	MULTI	PWSL123.MULTI	3 yards (2.74m)
-------------	-------	---------------	-----------------



(A)



(B)



(C)



Backing  
44"

*If kitting, refer to the final pattern for yardage amounts,  
it is recommended that a sample is made to confirm accuracy.*