

Featuring Palette Indigo by Tim Holtz

# Double Wedding Ring Quilt - Indigo

Finished Size: 10<sup>3</sup>/<sub>4</sub> Yards (9.83m)

Project designed by Quiltsmart Colored by Kerri Thomson

Purchase pattern at [quiltsmart.com](http://quiltsmart.com)

Techniques: Finished edge fusible applique and Sew and Flip corners | Skill Level: Advanced Beginner



# Double Wedding Ring Quilt - Indigo

## Fabric Requirements

DESIGN	COLOR	ITEM ID	YARDAGE
(A) Indigo Collage	Indigo	PWTH290.INDIGO	5/8 yard (0.57m)
(B) Indigo Stamps	Indigo	PWTH291.INDIGO	1 1/8 yards (1.03m)
(C) Indigo Tickets	Indigo	PWTH292.INDIGO*	1 1/4 yards (1.14m)
(D) Indigo Map	Indigo	PWTH293.INDIGO	1 1/8 yards (1.03m)
(E) Indigo Ledger	Indigo	PWTH294.INDIGO	1 1/8 yards (1.03m)
(F) Indigo Typography	Indigo	PWTH295.INDIGO	5/8 yard (0.57m)
(G) Indigo Damask	Indigo	PWTH296.INDIGO	5/8 yard (0.57m)
(H) Indigo Wallpaper	Indigo	PWTH297.INDIGO	5/8 yard (0.57m)
(I) Indigo Tiny Print	Indigo	PWTH298.INDIGO	1/2 yard (0.46m)
(J) Indigo Vintage	Indigo	PWTH299.INDIGO	1/2 yard (0.46m)
(K) Sewing Instructions	Linen	PWTH110.LINEN	3/4 yard (0.69m)
(L) Tailored	Linen	PWTH066.LINEN	1 1/8 yards (1.03m)
(M) Multiplication Table	Parchment	PWTH106.PARCHMENT	3/4 yard (0.69m)

\* includes binding

## Backing (Purchased Separately)

**44" (1.12m) wide**

Indigo Map

Indigo

PWTH293.INDIGO

5 yards (4.57m)

**OR**

**108" (2.74m) wide**

Receipt

Aqua

QBTH010.AQUA

2 1/4 yards (2.06m)



(A)



(B)



(C)



(D)



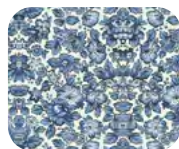
(E)



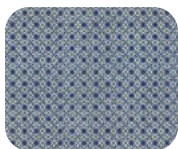
(F)



(G)



(H)



(I)



(J)



(K)



(L)



(M)



Backing  
44"



Backing  
108"