



Featuring Holidays Past by Tim Holtz

Balsam Gnomes Quilt

Finished Size: 56" x 72" (1.42m x 1.83m)

Project designed by Bonnie Osness - Lake Girl Quilts

Purchase pattern at lakegirlquilts.com

Technique: Pieced and Applique | Skill Level: Advanced Beginner



Balsam Gnomes Quilt

Fabric Requirements

DESIGN	COLOR	ITEM ID	YARDAGE
(A) Holiday Collage	Multi	PWTH195.MULTI	¼ yard (0.23m)
(B) Caroler	Neutral	PWTH196.NEUTRAL	¼ yard (0.23m)
(C) Woodland Collage	Multi	PWTH197.MULTI	¼ yard (0.23m)
(D) Lodge	Multi	PWTH198.MULTI	¼ yard (0.23m)
(E) Postcard Collage	Multi	PWTH199.MULTI	¼ yard (0.23m)
(F) Winter Toile	Neutral	PWTH200.NEUTRAL	¼ yard (0.23m)
(G) Poinsettia Print	Multi	PWTH201.MULTI	¼ yard (0.23m)
(H) Berry Branch	Red	PWTH202.RED	¼ yard (0.23m)
(I) Christmas Clippings	Neutral	PWTH203.NEUTRAL	¼ yard (0.23m)
(J) Pine Chart	Green	PWTH204.GREEN	¼ yard (0.23m)
(K) Festive Ledger	Red	PWTH205.RED	¼ yard (0.23m)
(L) Confections	Green	PWTH206.GREEN	¼ yard (0.23m)
(M) Multi Stripe	Multi	PWTH207.MULTI	¼ yard (0.23m)
(N) Taped Gingham	Black	PWTH208.BLACK	¼ yard (0.23m)
(O) Provisions	Sage	PWTH115.8SAGE	1 yard (0.91m)
(P) Provisions	Crimson	PWTH115.8CRIM	1 yard (0.91m)
(Q) Provisions	Rose	PWTH115.8ROSE	⅞ yard (0.11m)
(R) Provisions	Onyx	PWTH115.8ONYX*	1 yard (0.91m)
(S) Cracked Shadow	Quartz	PWTH128.QUARTZ	⅝ yard (0.57m)

* includes binding

Backing (Purchased Separately)

44" (1.12m) wide

Holiday Collage	Multi	PWTH195.MULTI	4 yards (3.66m)
-----------------	-------	---------------	-----------------

OR

108" (2.74m) wide

Holidays Past Collage	Multi	QBTH012.MULTI	2 yards (1.83m)
-----------------------	-------	---------------	-----------------

Fabric Swatches on next page...

*If kitting, refer to the final pattern for yardage amounts,
it is recommended that a sample is made to confirm accuracy.*

Fabric Swatches



(A)



(B)



(C)



(D)



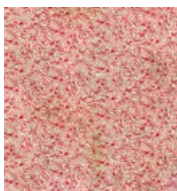
(E)



(F)



(G)



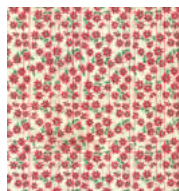
(H)



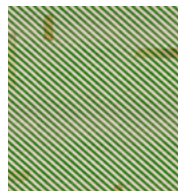
(I)



(J)



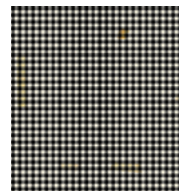
(K)



(L)



(M)



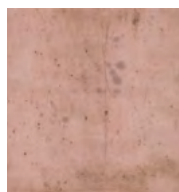
(N)



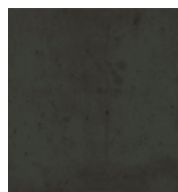
(O)



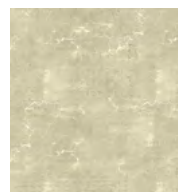
(P)



(Q)



(R)



(S)



Backing
44"



Backing
108"