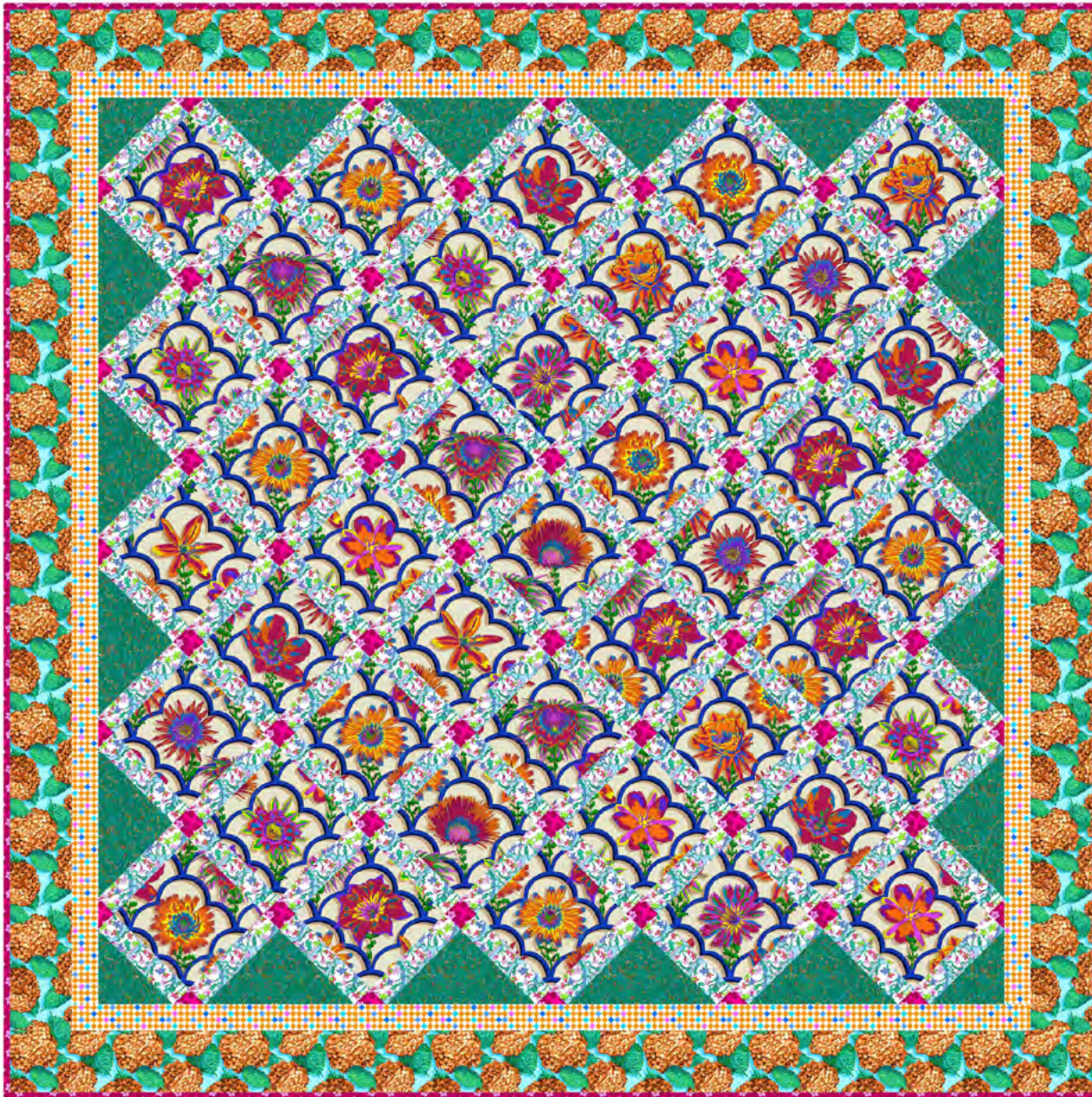


Trellis Quilt

Featuring Florescence by
Sam Wilde

Collection:	Florescence by Sam Wilde
Technique:	Pieced
Skill Level:	Advanced Beginner
Finished Size:	61 ³ / ₄ " x 61 ³ / ₄ " (1,56m x 1,56m)

All possible care has been taken to ensure the accuracy of this pattern. We are not responsible for printing errors or the manner in which individual work varies. Please read the instructions carefully before starting this project. If kitting, it is recommended a sample is made to confirm accuracy.



Project designed by Stacey Day | Tech edited by Alison M. Schmidt

Fabric Requirements

DESIGN	COLOR	ITEM ID	YARDAGE
(A) Chrono Corsage	Dahlia	PWVE016.DAHLIA	3 yards (2.74m)
(B) Hydrangea Hedgerow Small	Marigold	PWVE019.MARIGOLD	¾ yard (0.69m)
(C) Fragrant Fen	Sage	PWVE020.SAGE	½ yard (0.46m)
(D) Vanilla Vineyard	Periwinkle	PWVE022.PERIWINKLE	1 yard (0.91m)
(E) Tilted Tiles	Sunflower	PWVE023.SUNFLOWER	¾ yard (0.34m)
(F) Petal Pasture	Fuchsia	PWVE024.FUCHSIA*	⅔ yard (0.6m)1

* includes binding

Backing (Purchased Separately)

44" (1.12m) wide

Marvelous Menagerie

Cornflower

PWVE017.CORNFLOWER

4 yards (3.66m)

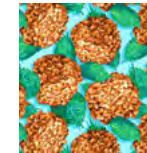
OR

108" (2.74m) wide

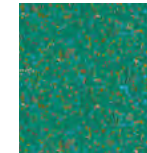
2 yards (1.83m)



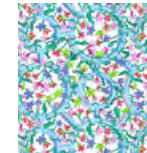
(A)



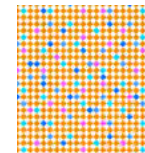
(B)



(C)



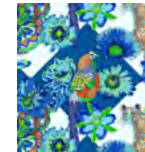
(D)



(E)



(F)



Backing
44"

Additional Recommendations

- 100% cotton thread in colors to match
- 70" x 70" (1.78m x 1.78m) batting

Optional but helpful:

- Spray starch/starch alternative
- 6½" square rotary cutting ruler

Cutting

WOF = Width of Fabric

From Fabric A, fussy cut:

(41) 6½" x 6½" on-point squares, centered on different floral motifs

From Fabric B, cut:

(6) 4" x WOF for outer border

From Fabric C, cut:

- (1) 9¾" x WOF; cut
 - (4) 9¾" x 9¾", cut in half diagonally twice to yield 16 side setting triangles
- (1) 5⅛" x WOF; cut
 - (2) 5⅛" x 5⅛", cut in half diagonally once to yield 4 corner setting triangles

From Fabric D, cut:

- (5) 6½" x WOF; cut
 - (100) 1¾" x 6½" sashing strips

From Fabric E, cut:

(6) 2" x WOF for inner border

From Fabric F, cut:

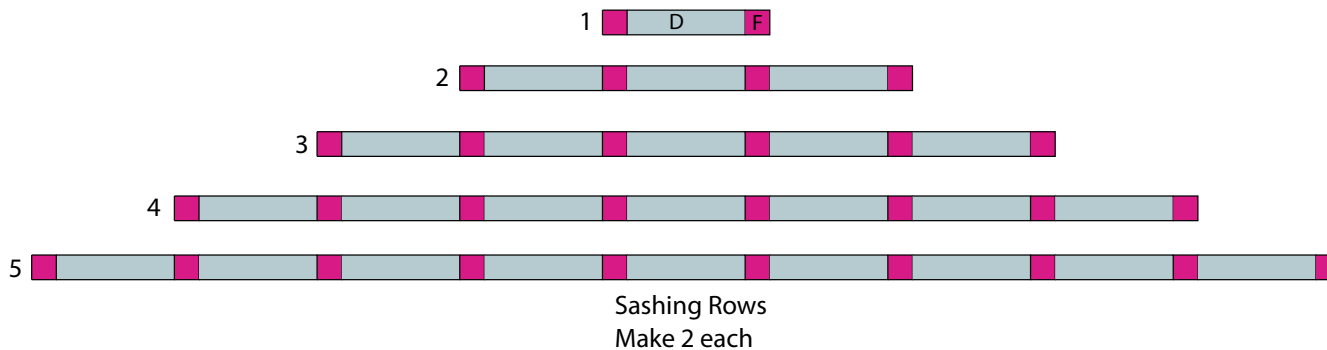
- (3) 1¾" x WOF; cut
 - (60) 1¾" x 1¾" cornerstones
- (7) 2½" x WOF for binding

Instructions

Note: All seam allowances are ¼" and pieces are sewn right sides together. Press after each seam in the direction listed.

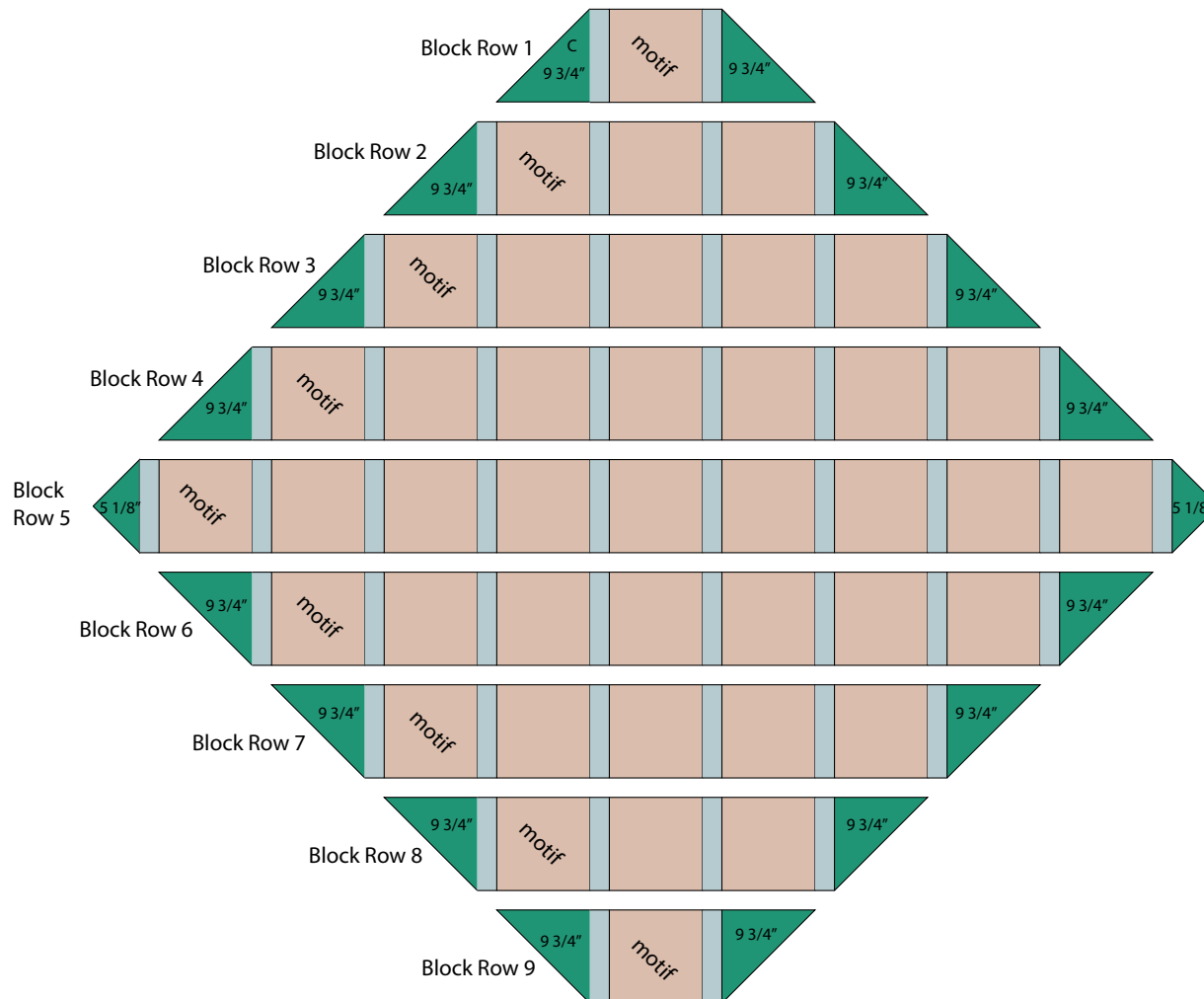
- Using the **Fabric F** 1¾" x 1¾" cornerstones and the **Fabric D** 1¾" x 6½" sashing strips, make 2 each of Sashing Rows 1-5. Press towards **Fabric D**.

Fig. 1



- Using a design wall or the floor, lay out the **Fabric A** $6\frac{1}{2}'' \times 6\frac{1}{2}''$ squares and remaining **Fabric D** sashing strips in block rows as shown in **Figure 2**. Rearrange as needed until you are happy with the distribution of the different floral motifs and take a photograph if you won't be immediately continuing on to step 3.

Fig. 2



3. Stack the **Fabric A** squares and **Fabric D** sashing strips in each block row together in order from bottom left to top right to prepare for sewing. Make sure the motif is facing the same direction for all the rows. Maintain the directional orientation for each of the following steps.
4. Sew the blocks and sashing strips together one at a time in order to maintain your chosen block order, to make 9 diagonal rows. Press towards the sashes. Sew a **Fabric C** $9\frac{3}{4}$ " triangle to opposite ends of Rows 1-4 and 6-9, and a **Fabric C** $5\frac{1}{8}$ " triangle to opposite ends of Row 5. **Fig. 2**, page 4.

Quilt Top Assembly

Note: Follow the **Quilt Layout** diagram (page 6) while assembling the quilt. Press seam allowances towards the Sashing Strips. Measure the Quilt Center width and height before cutting and adding borders and adjust border measurements if necessary to match your measurements.

5. Sew the diagonal rows together in order with the corresponding Sashing Row between each. Press towards the sashing rows. Sew the remaining **Fabric C** $5\frac{1}{8}$ " triangles to the top left and bottom right to complete the top.
6. Square up the quilt top, trimming the cornerstones even with the **Fabric C** triangle edges, to measure $51\frac{3}{4}$ " square.
7. Sew the **Fabric E** 2" x WOF strips together end to end. Cut (2) 2" x $51\frac{3}{4}$ " side inner borders and (2) 2" x $54\frac{3}{4}$ " top/bottom inner borders. Sew to the sides, matching ends and center. Press towards the borders, and then add the top/bottom borders to the quilt center in the same manner.
8. Repeat step 6 to make and add the **Fabric B** outer border strips (sides: 4" x $54\frac{3}{4}$ ", top/bottom: 4" x $61\frac{3}{4}$ ") to complete the quilt top.

Finishing

9. Sew together the $2\frac{1}{2}$ " **Fabric F** binding strips end-to-end using diagonal seams. Press seams open. Press the binding strip in half wrong sides together.
10. Layer backing (wrong side up), batting, and quilt top (right side up). Baste the layers together and quilt as desired. Trim excess batting and backing even with the top after quilting is completed.
11. Leaving an 8" tail of binding, sew the binding to the top of the quilt through all layers matching all raw edges. Miter corners. Stop approximately 12" from where you started. Lay both loose ends of binding flat along quilt edge. Where the loose ends meet, fold them back on themselves and press to form a crease. Using this crease as your stitching line, sew the two open ends of the binding right sides together. Trim seam to $\frac{1}{4}$ " and press open. Finish sewing binding to quilt.
12. Turn the binding to the back of quilt and hand-stitch in place.

Quilt Layout

