



Featuring Reflections by Brandon Mabry and Kaffe Fasset Collective February 2023

Trip Around the Sun Quilt

Finished Size: 94" (2.39m) Square

Project designed by Robin Long - Robin Ruth Design

Purchase pattern at robinruthdesign.com

Technique: Pieced and Strip Pieced Mariner's Compass using Fat Robin 16-Point Book and Ruler Combo and 32-Point Book and Ruler Combo

Skill Level: Intermediate

freespiritfabrics.com



Trip Around the Sun Quilt

Fabric Requirements

DESIGN	COLOR	ITEM ID	YARDAGE
(A) Reflections	Teal	PWBM087.TEAL*	1⅞ yards (1.03m)
(B) Reflections	Fuchsia	PWBM087.FUCHSIA	⅓ yard (0.30m)
(C) Reflections	Green	PWBM087.GREEN	⅝ yard (0.57m)
(D) Reflections	Dark	PWBM087.DARK	⅔ yard (0.61m)
(E) Reflections	Orange	PWBM087.ORANGE	⅝ yard (0.57m)
(F) Reflections	Purple	PWBM087.PURPLE	⅓ yard (0.30m)
(G) Reflections	Red	PWBM087.RED	⅓ yard (0.30m)
(H) Fish Lips	Banana	PWBM007.BANANA	½ yard (0.46m)
(I) Fish Lips	Black	PWBM007.BLACK	¼ yard (0.23m)
(J) Fish Lips	Blue	PWBM007.BLUE	½ yard (0.46m)
(K) Fish Lips	Green	PWBM007.GREEN	½ yard (0.46m)
(L) Beaded Curtain	Contrast	PWGP191.CONTRAST	⅓ yard (0.30m)
(M) Beaded Curtain	Dark	PWGP191.DARK	½ yard (0.46m)
(N) Beaded Curtain	Red	PWGP191.RED	⅝ yard (0.57m)
(O) Carpet Cookies	Black	PWGP192.BLACK	2⅞ yards (1.94m)
(P) Shiraz	Blue	PWGP194.BLUE	1 yard (0.91m)
(Q) Tudor	Contrast	PWGP195.CONTRAST	½ yard (0.46m)
(R) Tudor	Multi	PWGP195.MULTI	⅝ yard (0.57m)
(S) Twig	Black	PWGP196.BLACK	⅝ yard (0.57m)
(T) Twig	Blue	PWGP196.BLUE	⅝ yard (0.57m)
(U) Twig	Red	PWGP196.RED	⅓ yard (0.30m)
(V) Twig	Yellow	PWGP196.YELLOW	⅔ yard (0.61m)
(W) Tonal Floral	Gold	PWGP197.GOLD	⅞ yard (0.80m)
(X) Tonal Floral	Red	PWGP197.RED	1 yard (0.91m)
(Y) Tonal Floral	Turquoise	PWGP197.TURQUOISE	⅝ yard (0.57m)
(Z) Funky Flora	Indigo	PWBM011.INDIGO	½ yard (0.46m)

* includes binding

Backing (Purchased Separately)

108" (2.74m) wide

Millefiore	Blue	QBGP006.BLUE	8 yards (7.32m)
OR			
Millefiore	Jade	QBGP006.JADE	8 yards (7.32m)

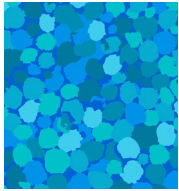
Fabric Swatches on next page...

*If kitting, refer to the final pattern for yardage amounts,
it is recommended that a sample is made to confirm accuracy.*



Trip Around the Sun Quilt

Fabric Swatches



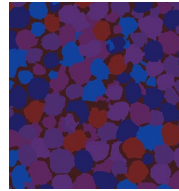
(A)



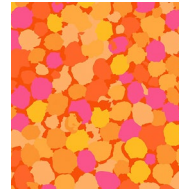
(B)



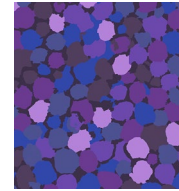
(C)



(D)



(E)



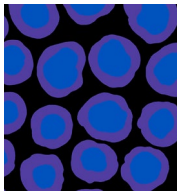
(F)



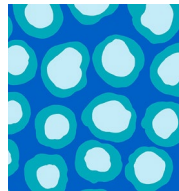
(G)



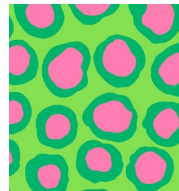
(H)



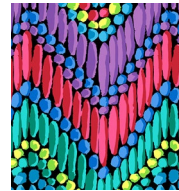
(I)



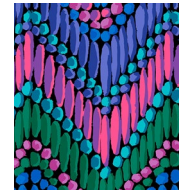
(J)



(K)



(L)



(M)



(N)



(O)



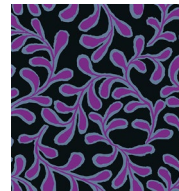
(P)



(Q)



(R)



(S)



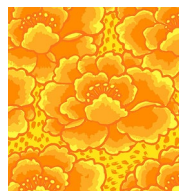
(T)



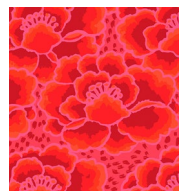
(U)



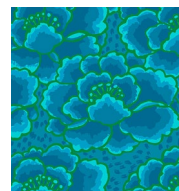
(V)



(W)



(X)



(Y)



(Z)



Backing
108"



Backing
108"