



Featuring Ravel by e bond

Tumbling Bricks Quilt

Finished Size: 54" x 72" (1.37m x 1.82m)

Project designed by The Cloth Parcel

Purchase pattern at theclothparcel.com

Technique: Pieced | Skill Level: Advanced Beginner



Tumbling Bricks Quilt

Fabric Requirements

DESIGN	COLOR	ITEM ID	YARDAGE
(A) Ravel	Ocean	PWEB033.OCEAN	$\frac{3}{8}$ yard (0.34m)
(B) Unravel	Ink	PWEB034.INK	$\frac{3}{8}$ yard (0.34m)
(C) Loosen	Blaze	PWEB035.BLAZE	$\frac{3}{8}$ yard (0.34m)
(D) Fray	Indigo	PWEB036.INDIGO	$\frac{3}{8}$ yard (0.34m)
(E) Ebb	Frost	PWEB037.FROST	$\frac{3}{8}$ yard (0.34m)
(F) Stitch	Noir	PWEB038.NOIR	$\frac{3}{8}$ yard (0.34m)
(G) Tangle	Saltwater	PWEB039.SALTWATER	$\frac{3}{8}$ yard (0.34m)
(H) Accumulate	X-ray	PWEB040.XRAY*	1 yard (0.91m)
(I) Intertwine	Sandstone	PWEB041.SANDSTONE	$\frac{3}{8}$ yard (0.34m)
(J) Small Intertwine	Watermelon	PWEB042.WATERMELON	$\frac{3}{8}$ yard (0.34m)
(K) Twist	Mix	PWEB043.MIX	$\frac{3}{8}$ yard (0.34m)
(L) Scribble	Charcoal	PWEB044.CHARCOAL	$\frac{3}{8}$ yard (0.34m)
(M) Remainder	Plaster	PWEB045.PLASTER	$\frac{3}{8}$ yard (0.34m)
(N) Memory	Candy	PWEB046.CANDY	$\frac{3}{8}$ yard (0.34m)
(O) Jumble	Photoflash	PWEB047.PHOTOFLASH	$\frac{3}{8}$ yard (0.34m)

* includes binding

Backing (Purchased Separately)

44" (1.12m) wide

Jumble Photoflash PWEB047.PHOTOFLASH 4 yards (3.66m)

OR

108" (2.74m) wide

2 yards (1.83m)



(A)



(B)



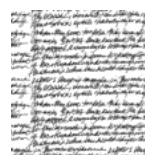
(C)



(D)



(E)



(F)



(G)



(H)



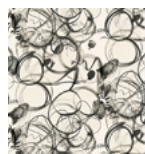
(I)



(J)



(K)



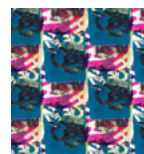
(L)



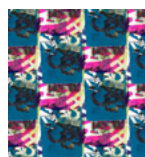
(M)



(N)



(O)



Backing
44"

*If kitting, refer to the final pattern for yardage amounts,
it is recommended that a sample is made to confirm accuracy.*